

May 30, 2017  
(Revised)

**BASIN**  
RESEARCH  
ASSOCIATES

1933 DAVIS STREET  
SUITE 210  
SAN LEANDRO, CA 94577  
VOICE (510) 430-8441  
FAX (510) 430-8443

Ms. Leslie Lazarotti  
Senior Associate Biologist  
**WRA, Inc.**  
4225 Hollis Street  
Emeryville, CA 94608

RE: *Cultural Resources Assessment Report* – Literature Search/Due Diligence Review,  
Sierra Pines Residential Development, 4300 Dominquez Road, City of Rocklin  
Placer County

Dear Ms. Lazarotti,

Please let this letter stand as Basin Research Associates' completion of an archaeological records search through the North Central Information Center, a limited literature review, a request to the Native American Heritage Commission (NAHC) for a search of the Sacred Lands File Inventory, and notification of Native Americans recommended by the NAHC. A field inventory was not undertaken as the project site, a former industrial facility, was subject to demolition and remediation in 2015.

The review was completed to determine if significant cultural resources under the California Environmental Quality Act (CEQA) might be affected by a proposed redevelopment action. A preliminary review of this project pursuant to CEQA has tentatively identified a Mitigated Negative Declaration as the appropriate level of environmental review for the Sierra Pines Residential Development.

#### **PROJECT LOCATION AND DESCRIPTION**

The City of Rocklin is 21 miles northeast of the City of Sacramento and 14 miles west of the City of Auburn. Rocklin is bordered by the City of Lincoln on the north, a small portion of State Route (SR) 65 and the City of Roseville on the south and southwest, unincorporated Placer County on the west and northwest, and the Town of Loomis to the east (CA-AAA 2004; PMC 2011; United States Geological Survey [hereafter USGS], Rocklin, Calif. 1981, 7.5' quadrangle topographic map, Township 11 North, Range 7 East, part Section 17) [Figs. 1-3].

The project site at 4300 Dominguez Road was formerly occupied by a Sierra Pacific Industries fiberboard plant – Sierra Pine LTD (reconstituted wood products) on the west side of Dominguez

Road that was closed December 2011 and was demolished prior to 2015. Present-day Dominguez Road includes an existing Class II Bikeway (USGS 1981; Christianson 2011; Sacramento Business Journal 2011; PMC 2011: Fig. 3.0-3, -4, -59, 3.01/DEIR; Google Earth [maps] 2012, 2015).

The proposed Sierra Pines Residential Development (APN 045-021-011) is south of Pacific Street and north of Granite Drive and west of Sierra College Boulevard. The project is part of the Granite Drive-Sierra Meadows Planning Area and is within the 1,650 acre Rocklin Redevelopment Project. The General Plan designation is Mixed Use (MU) and High Density Residential (HDR). The project would develop approximately 28.17 acres into 199 single-family residential lots and requires a General Plan Amendment (GPA 2016-0002) and a rezone (Z2016-0002 from Heavy Industrial (M-2) to Planned Development 7 dwelling units per acre (PD-7)) (Rocklin 2016:1/New Project Information).

The quaternary geology of the project is primarily Jurassic Penryn Pluton (Jp) with Pleistocene Older alluvium, undivided (Qoa) and minor Holocene alluvium present along Sucker Creek (USGS 1981, 1994; Gutierrez 2011) [Fig. 4].

## RESEARCH PROTOCOLS

A prehistoric and historic site record and literature search was completed by the California Historical Resources Information System, North Central Information Center, California State University, Sacramento (CHRIS/NCIC File No. PLA-16-125 by Hallam). Reference material consulted by the CHRIS/NCIC and/or Basin Research Associates included:

- *National Register of Historic Places* listings for Placer County, California (USNPS 2015a-e).
- *Historic Properties Directory* for Placer County with the most recent updates of the National Register of Historic Places (NRHP); California Register of Historical Resources (CRHR); California Historical Landmarks; and, California Points of Historical Interest (CAL/OHP 2012a).
- *Archeological Determinations of Eligibility for Placer County* (CAL/OHP 2012b).
- *California History Plan* (CAL/OHP 1973).
- *California Inventory of Historic Resources* (CAL/OHP 1976).
- *Five Views: An Ethnic Sites Survey for California* (CAL/OHP 1988).
- *California Historical Resources – Placer County* [including National Register, State Landmark, California Register, and Point of Interest] (CAL/OHP 2016).
- *Historic Sites in Rocklin* (Rocklin/Planning 2016 after the Rocklin Historical Society)
- Relevant sections of the *City of Rocklin General Plan Update. Volume 1 – Draft Environmental Impact Report* [EIR] (PMC 2011) and *City of Rocklin General Plan* (Rocklin/Planning 2012) regarding cultural resources including lists and map of Points of Interest in the City of Rocklin.

## **INDIVIDUALS, AGENCIES AND GROUPS** (see Attachments)

The Native American Heritage Commission (NAHC) was contacted for a search of the Sacred Lands Inventory on file with the Commission (Busby 2016a). The five Native American individuals/groups recommended by the NAHC as having additional information were contacted by letter (Busby 2016b-f):

Nicolas Fonseca, Chairperson, Shingle Springs Band of Miwok Indians, Shingle Springs;  
 Grayson Coney, Cultural Director, T'si-Akim Maidu, Colfax;  
 Don Ryberg, Chairperson, T'si-Akim Maidu, Grass Valley;  
 Gene Whitehouse, Chairperson, United Auburn Indian Community of the Auburn Rancheria, Auburn; and,  
 Darrel Cruz, Tribal Historic Preservation Officer, Cultural Resources Department, Washoe Tribe of Nevada and California, Gardnerville, NV.

Two responses were received. The Shingle Springs Rancheria was not aware of any known cultural resources on the projects (Fonseca 2016). An email from the United Auburn Indian Community of the Auburn Rancheria requested information on where the project was in the CEQA process (McAdams 2016). The request was forwarded to the City of Rocklin (David Mohlenbrok, Environmental Services Operations Manager). No other responses were received.

No other agencies, departments or local historical societies were contacted directly regarding landmarks, potential historic sites or structures.

## **RESEARCH FINDINGS**

This report was prepared to identify potentially significant archaeological, Native American, or built environment resources listed or eligible for the California Register of Historical Resources (CRHR) within or adjacent to the proposed project.

### **RECORDS SEARCH RESULTS (CHRIS/NCIC File No. PLA-16-125)**

No prehistoric, combined prehistoric/historic or historic sites have been recorded or reported in or adjacent the project.

### ***Adjacent Cultural Resources***

P-31-000118 ((CA-PLA-932H), a historic period resource, was located and recorded adjacent to the southern project site boundary along an unnamed tributary of Antelope Creek/Secret Ravine (Sucker Creek). The resource starts 800 feet south of Dominquez Road paralleling the existing wood pole power line and extending to a point approximately 1300 feet south of the starting point. The resource is described as “Primarily amorphous mining evidence” - “diffuse tailings piles in a second growth forest and blackberry bog” located “just north of Granite Drive starting at the stub of Warren Lane east of Rocklin. ... [in] the area around a drainage and tributaries Antelope Creek and Secret Ravine [creek]” (Gerry 2000). No other historic information is available. Gerry (2000) notes that it is not a significant site.

### ***Reports on File***

Four cultural resources compliance reports on file at the CHRIS/NCIC are adjacent to the project site. All are negative for significant resources within and/or adjacent to the project based on field reviews.

*Sucker Ravine-Loomis Tributary “CLOMR” Cultural Resources Inventory and Evaluation, Rocklin, Placer County, California* (Windmiller and Vallaire 2014/#011482) - adjacent to Dominquez Road along portion of eastern project site boundary. Four resources located: placer mined landscape, pit diggings associated with the placer landscape, channelized portion of Sucker Ravine and remnant of and old earthen reservoir. None of the resources appeared eligible for the National Register of Historic Places and/or the California Register of Historical Resources.

*4410 Granite Drive, Cultural Resources Assessment Rocklin, Placer County, California* (Windmiller 2014/#011489) - southern boundary of current project site is adjacent to and extends approximately 800 feet east to Dominquez Road. No resources located during field inventory.

*Determination of Eligibility and Effect for the Brighton Project Area, City of Rocklin, Placer County, California* (Barnett 2014/#012098) - touches southeast corner of current project site. No resources.

*Section 106 NHPA Compliance Documentation for the Brighton Development Project (SPK-2014-00353), ECORP Project No. 2014-079* (Knapp 2014/#012098A) - touches southeast corner of current project site. No resources.

### **NATIVE AMERICAN RESOURCES - Prehistoric**

The *City of Rocklin General Plan* (Rocklin/Planning 2012:4B-6) notes that “The City of Rocklin is located between three areas with defined patterns of human development: the Oroville locality to the north, the Central Sierra area to the east and the Central Valley/Delta area to the west.” To date the pattern – or possibly a pattern unique to the Rocklin vicinity – has not been determined, due to few archaeological studies conducted in the region.

Bedrock mortars, lithic scatters, fire-fractured rock, chipped and ground stone artifacts, basalt flakes, and midden deposits are among the cultural material observed at prehistoric sites in the Rocklin area. Prehistoric resources are generally located “along drainages, on flat ridges and terraces, and in areas that contain oak woodlands with rock outcrops.” Sources of freshwater in the vicinity of the project site would have been abundant: Antelope Creek is located approximately 0.25 miles northwest of the project; Sucker Ravine Creek is located approximately 0.5 miles south of the project; and, intermittent Sucker Creek just south of the project (USGS 1981; Rocklin/Planning 2012:Fig. 4-3, 4B-7).

No known prehistoric cultural resources are within or adjacent to the project site.

## NATIVE AMERICAN RESOURCES - Ethnographic

The aboriginal inhabitants of the project vicinity belonged to a Native American group known as the *Nisenan*, sometimes referred to as the *Southern Madiu*, who occupied the drainages of the Yuba, Bear, and American rivers and the lower drainages of the Feather River from the Sacramento River on the west to the crest of the Sierra Nevada in the east. The northern boundary has not been clearly delineated while the southern bounded as a few miles south of the American River (Kroeber 1929:253; Wilson and Towne 1978:388; Rocklin/Planning 2012:4B-7). As mapped by Beals (1933:336, Map 1) the City of Rocklin is within the far western part of *Hill Nisenan* territory (Note: City of Rocklin General Plan (2012:4B-8) refers to “*Foothill Nisenan*”).

Wilson and Towne (1978:388-389) note that the locations of ethnographic Hill and Valley Nisenan villages were similar: Hill Nisenan villages on ridges and large flats along major streams while Valley Nisenan villages were built on low, natural rises along streams and rivers or on gentle slopes with a southern exposure. The closest major village to or within the City of Rocklin appears to have been *Bakacha* (Wilson and Towne 1978:388, Fig. 1, #70).

No known Native American villages, trails, traditional use areas or contemporary use areas have been identified in, adjacent or near the project. The NAHC search of the *Sacred Lands Inventory* for the project site was negative for listed resources within or adjacent to the project site (Souza 2016).

## HISTORIC PERIOD RESOURCES - *Hispanic Period*

The Spanish philosophy of government in northwestern New Spain was directed at the founding of presidios, missions, and secular towns with the land held by the Crown (1769-1821). The later Mexican Period (1822-1848) policy stressed individual ownership of the land (Hart 1987).

Early Spanish expeditions likely followed aboriginal trails. None of these trails/routes can be placed in the general project area (e.g., Beck and Haase 1974). None of the Spanish Era concessions (title held by crown) or Mexican Era land grants made between 1841 and 1846 included the project County (Beck and Haase 1974:#24; Kyle 2002:263). Nor were any of the 21 missions established in California located as far north as the project (e.g., Beck and Haase 1974:#19).

No recorded Hispanic Period resources were identified within the project site.

## HISTORIC PERIOD RESOURCES - *American Period*

Placer County was organized in 1851 from parts of Sutter and Yuba counties with its county seat at Auburn, about approximately 12 miles northeast of Rocklin (Patera 1991:181, 281; Kyle 2002:271).

The Gold Rush (1848), followed later by the construction of the transcontinental railroad (1869) were the major historical events impacting the study area. The closest source of gold, known as Secret Ravine, involved a long ravine just south of present-day Newcastle (ca. 6.7-7 miles northeast of the project) running southwesterly past Rocklin continuing south of Roseville. Pino, initially known as Pine Grove and currently as Loomis - located approximately three miles

northeast of Rocklin (currently adjacent to the east side of Rocklin's city boundary) - was the center of extensive placer mining in the ravine diggings in the 1850s and 1860s (Rocklin/Planning 2012:4B-9; Gudde 1975:Map 4, 268, 314, 336; Patera 1991:122, 194).

The Central Pacific Railroad reached Rocklin in May 1864 and is listed as State Historic Landmark No. 780.2, First Transcontinental Railroad – Rocklin at the SE corner of Rocklin & Front Street. The arrival of the railroad resulted in the establishment of a post office at Rocklin in April 1868 (Patera 1991:181). The railroad roundhouse at Rocklin was located at Rocklin Road and South Grove Street was moved in April 1908 four miles south to Roseville (demolished in 1910) (CAL/OHP 1990:149; Kyle 2002:277; Patera 1991:183; PMC 2011:4.8-7/DEIR; Rocklin/Planning 2012:4B-14).

“Rocklin”, a purported corruption of Rock Land, is a name that encapsulates its geographic setting, an area notable for extensive rock outcroppings and quarries. Reportedly “The Finnish people who settled here in the 1870s named it Rocklissa,” a name later changed to Rocklin. The first quarry in Rocklin opened in 1863 and became the principal source of granite- in the Sacramento Valley. By 1904 at least 15 quarries were in operation and several inactive. Quarrying declined over the years and concluded at the start of the 21<sup>st</sup> century. The City of Rocklin was incorporated in 1893, with a population of approximately 550 at the time (Patera 1991:181; Rocklin/Planning 2012:4B-9-10).

Agriculture and quarrying dominated local activities but beginning in the 1970s-1980s, the Rocklin area drew high technology firms and other industries to the region resulting in expanded commercial and residential development. Steady population growth followed due to its proximity to Sacramento with the development of master planned communities formerly in agricultural land. The City has evolved with a population just over 60,000 with many working locally or in the state capitol.

No recorded American Period resources were identified within the project site. One historic period resource (P-31-001118) has been recorded adjacent to the project and is attributed to depression era mining on a small scale or avocational basis (1914-1945?). Gerry (2000) notes that it is not a significant site.

#### LISTED HISTORIC PROPERTIES

No listed state or federal historically or architecturally significant structures, landmarks or points of interest have been identified in or adjacent to the proposed project.

The project appears to have been located near the lands of the former Aitken Ranch, one of the 19 Points of Interest in the City of Rocklin (PMC 2011:4.8-6 – 4.8-8/DEIR; Rocklin/Planning 2012: 4B-14 – 4B-15, Table 4-5). The ranch, established in 1850 by Will Dana Perkins who was one of Rocklin's earliest and foremost citizens, was located on the west side of Pacific Street between Americana Way and Dominguez Road (PMC 2011:4.8-8/DEIR; Rocklin/Planning 2012:4B-15). The 19 Points of Interest map places #18 Aitken Ranch west of the project site in the vicinity of Americana Way, Pacific Street and the railroad tracks and spur leading to the former fiberboard plant (Rocklin/Planning 2012:Fig. 4-4). The recent list of 20 Historic Sites in Rocklin developed by the Rocklin Historical Society (Rocklin/Planning 2016) does not include The Aitken Ranch.

## CONCLUSIONS

- The records search conducted by the CHRIS/NCIC was negative for recorded and/or reported resources within the project site. .
- No reported prehistoric, combined prehistoric/historic era or historic sites are located within the project site.
- No known ethnographic, traditional or contemporary Native American resources have been identified within or adjacent to the project site.
- No Hispanic or American Period features have been identified within the project site. One historic period resource interpreted as representing depression era mining is adjacent to the project site along its southern boundary but is not considered significant.
- Listed cultural resources.
  - No listed, determined or pending California Register of Historical Resources have been identified in or adjacent to the project area.
  - No significant or potentially significant state or federal cultural resources/historic properties, landmarks, points of interest, etc. have been identified in or adjacent to the project.
- The project site appears to be located in an area of low potential for both prehistoric and historic archaeological resources. Subsurface impacts associated with the previous operations of a former fiberboard plant and its subsequent demolition and remediation appear to have significantly reduced the potential for significant subsurface cultural resources. The areas adjacent to the southern and eastern boundaries have been subject to archaeological review. The historic resources associated with these areas have indications of past placer mining but these have been evaluated as not significant and appear to have been removed by recent development.

## MANAGEMENT RECOMMENDATIONS

It is the considered opinion of Basin Research Associates, based on a review of pertinent records, maps and other documents that the proposed project can proceed as planned in regard to prehistoric and historic archaeological resources.

No subsurface testing for buried archaeological resources appears necessary at this time as development over the past 50-80 years has significantly reduced the potential for subsurface cultural resources.<sup>1</sup> Archaeological monitoring of subsurface construction is not recommended

- 
1. Significant prehistoric cultural resources may include:
    - a. Human bone - either isolated or intact burials.
    - b. Habitation (occupation or ceremonial structures as interpreted from rock rings/features, distinct ground depressions, differences in compaction (e.g., house floors).
    - c. Artifacts including chipped stone objects such as projectile points and bifaces;

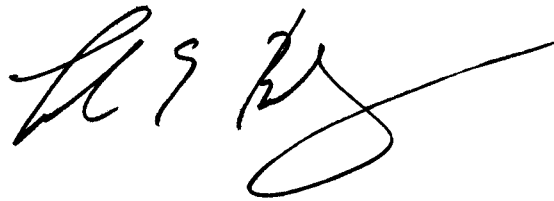
due to the low potential for exposing significant cultural resources. In the event of a potential significant discovery, a professional archaeologist should be contacted for review and identification with future actions dependent on the evaluation of the resource.

The exposure of any Native American burials shall be handled in accordance with state law.

### CLOSING REMARKS

If I can provide any additional information or be of further service please don't hesitate to contact me.

Sincerely,  
BASIN RESEARCH ASSOCIATES, INC.



Colin I. Busby, Ph.D., RPA  
Principal

- 
- groundstone artifacts such as manos, metates, mortars, pestles, grinding stones, pitted hammerstones; and, shell and bone artifacts including ornaments and beads.
  - d. Various features and samples including hearths (fire-cracked rock; baked and vitrified clay), artifact caches, faunal and shellfish remains (which permit dietary reconstruction), distinctive changes in soil stratigraphy indicative of prehistoric activities.
  - e. Isolated prehistoric artifacts.

Significant historic cultural materials may include finds from the late 19<sup>th</sup> through early 20<sup>th</sup> centuries. Objects and features associated with the Historic Period can include:

- a. Structural remains or portions of foundations (bricks, cobbles/boulders, stacked field stone, postholes, etc.).
- b. Trash pits, privies, wells and associated artifacts.
- c. Isolated artifacts or isolated clusters of manufactured artifacts (e.g., glass bottles, metal cans, manufactured wood items, etc.).
- d. Human remains.

In addition, cultural materials including both artifacts and structures that can be attributed to Hispanic, Asian and other ethnic or racial groups are potentially significant. Such features or clusters of artifacts and samples include remains of structures, trash pits, and privies.



## REFERENCES CITED AND CONSULTED

- Barnett, Bruce D. (Peak & Associates, Inc.)  
 2014 Determination of Eligibility and Effect for the Brighton Project Area, City of Rocklin, Placer County, California. MS #012098 on file, CHRIS/NCIC, CSU Sacramento.
- Beals, Ralph  
 1933 Ethnology of the Nisenan. University of California Publications in American Archaeology and Ethnology, Volume 31(6).
- Beck, W.A. and Y.D. Haase  
 1974 Historical Atlas of California (Third printing). University of Oklahoma Press, Norman.
- Busby, Colin I. (Basin Research Associates, San Leandro)  
 2016a Native American Heritage Commission Sacred Lands File & Native American Contacts List Request: Sierra Pines Residential Development, 4300 Dominquez Road, City of Rocklin, Placer County. Via email [nahc@nahc.ca.gov](mailto:nahc@nahc.ca.gov) on December 7, 2016.
- 2016b-f Letters to Nicolas Fonseca, Chairperson, Shingle Springs Band of Miwok Indians, Shingle Springs, CA; Grayson Coney, Cultural Director, T'si-Akim Maidu, Colfax, CA; Don Ryberg, Chairperson, T'si-Akim Maidu, Grass Valley, CA; Gene Whitehouse, Chairperson, United Auburn Indian Community of the Auburn Rancheria, Auburn, CA; Darrel Cruz, Tribal Historic Preservation Officer, Cultural Resources Department, Washoe Tribe of Nevada and California, Gardnerville, NV. Regarding: Request for Information – Sierra Pines Residential Development, 4300 Dominquez Road, City of Rocklin, Placer County. Dated December 9, 2015.
- California (State of), Department of Parks and Recreation, Office of Historic Preservation (CAL/OHP)  
 1973 The California History Plan. Volume One - Comprehensive Preservation Program. Volume Two - Inventory of Historic Features.
- 1976 California Inventory of Historic Resources.
- 1988 Five Views: An Ethnic Sites Survey for California.
- 1990 California Historical Landmarks.
- 1992 California Points of Historical Interest. May 1, 1992.
- 2012a [*Historic Properties Directory*] Directory of Properties in the Historic Property Data file for Placer County (includes *National Register of Historic Places* status codes, *California Historical Landmarks* and *California Points of Historical Interest* listings, etc.). Dated 4/05/2012 [most recent as of 12/09/2016].
- 2012b *Archeological Determinations of Eligibility* for Placer County. Dated 4/05/2012 [most recent as of 12/09/2016].

- 2016 [List] California Historical Resources – Placer County [including National Register, State Landmark, California Register, and Point of Interest]. <<http://ohp.parks.ca.gov/ListedResources/?view=county&criteria=31>> accessed 12/07/2017.
- California State Automobile Association (CA-AAA)  
2004 City Series. Roseville – Folsom and Vicinity. Map #2090.
- Christianson, Rich  
2011 SierraPine [sic] Shuts Down MDF [medium density fiberboard] Mill. December 15, 2011. Woodworking Industry News. Web accessed 12/02/2016.
- Eargle, Jr., Dolan H.  
1986 The Earth is Our Mother: A Guide to the Indians of California, Their Locales and Historic Sites. Trees Company Press, San Francisco.
- Elsasser, A.B.  
1978 Development of Regional Prehistoric Cultures. In *California*, edited by R.F. Heizer, Volume 8. Handbook of North American Indians, W.G. Sturtevant, general editor, pp. 37-57. Smithsonian Institution, Washington, D.C.
- Fonseca, Daniel  
2016 Response from Tribal Historic Preservation Officer (THPO) and Most Likely Descendant (MLD in regard to Proposed Sierra Pines Residential Development, 4300 Dominquez Road, City of Rocklin. Dated December 14, 2016.
- Gerry, Robert (Peak & Associates, Inc.)  
2000 Primary Record and Archaeological Site Record forms, P-31-000118 (CA-PLA-932H; Temporary Name/Number PA-00-GO1). On file, CHRIS/NCIC, CSU Sacramento.
- Goddard, George  
1857 Britton & Rey's Map of the State of California. Britton and Rey, San Francisco. Reprinted by The Friends of the Bancroft, University of California, Berkeley.
- Google Earth  
2012-2016 Aerial views of Sierra Pines Subdivision project area and vicinity, Rocklin, Placer County. Web accessed 12/02/2016.
- Gudde, Erwin G.  
1975 California Gold Camps: A Geographical and Historical Dictionary of Camps, Towns, and Localities where Gold was Found and Mined; Wayside Stations and Trading Centers. Edited by Elisabeth K. Gudde. University of California, Berkeley.  
1998 California Place Names: The Origin and Etymology of Current Geographical Names. Fourth Edition, revised and enlarged by William Bright. University of California Press, Berkeley.

- Gutierrez, Carlos I.  
 2011 Preliminary Geologic Map of the Sacramento 30' x 60' Quadrangle, California. California Department of Conservation California Geological Survey, Sacramento.
- Hallam, Nathan (CHRIS/NCIC Coordinator)  
 2016 Expedited Records Search for Sierra Pine [Dominguez Road, Rocklin, Placer Count]y. CHRIS/NCIC File No. PLA-16-125. Dated December 9, 2016. Copy on file, Basin Research Associates, San Leandro.
- Hart, J.D.  
 1987 A Companion to California (New edition, revised and expanded). University of California Press, Berkeley.
- Hoover, M.B., H.E. Rensch, E.G. Rensch and W.N. Abeloe  
 1966 Historic Spots in California (third edition). Stanford University Press, Palo Alto.
- Knapp, Katherine (ECORP Consulting, Inc.)  
 2014 Section 106 NHPA Compliance Documentation for the Brighton Development Project (SPK-2014-00353), ECORP Project No. 2014-079. MS #012098A, on file, CHRIS/NCIC, CSU Sacramento.
- Kroeber, A.L.  
 1925 Handbook of the Indians of California. Bureau of American Ethnology Bulletin 78. Government Printing Office, Washington, D.C.  
 1929 The Valley Nisenan. University of California Publications in American Archaeology and Ethnology, Volume 24(4).
- Kyle, D.E.  
 2002 Historic Spots in California (Fourth edition of Hoover, M.B., H.E. Rensch and E.G. Rensch). Stanford University Press, Stanford.
- McAdams, Melodi  
 2016 Email response to Colin I. Busby - Request for Information - Proposed Sierra Pines Residential Development at 4300 Dominguez Road, City of Rocklin. United Auburn Indian Community of the Auburn Rancheria, Tribal Historic Preservation Department, Melodi McAdams, Cultural Resources Associates. Dated December 29, 2016.
- Moratto, Michael J.  
 1984 California Archaeology. Academic Press, New York.
- Patera, E.L. (editor)  
 1991 H.E. Salley History of California Post Offices 1849-1990 (Second edition). The Depot, n.p. (Salley, H.E. and E.L. Patera, researchers).

## PMC

- 2011 Draft Environmental Impact Report [DEIR]. City of Rocklin General Plan Update. Volume 1 – 3.1 Local and Regional Setting and Section 4.8 Cultural and Paleontological Resources. SCH No. 2008072115. Prepared for City of Rocklin, Planning Division. August. Web, accessed 3/04/2015 and 12/2016.

Rocklin (City of), Planning Division (**Rocklin/Planning**)

- 2016 Historic Sites in Rocklin. Source: Rocklin Historical Society. <<http://www.rocklin.ca.us/historic-sites>> accessed 12/07/2016.

Rocklin (City of), Planning Division with Quad Knof, Inc., DKS Associates, Bollard & Brennan, Inc., Cotton/Bridges/Associates, Godbe Research & Analysis, and Peak & Associates (**Rocklin/Planning**)

- 2012 City of Rocklin General Plan. General Plan Elements. B. Open Space, Conservation & Recreation Element. Cultural Resources, pp. 4B-6 – 4B-15 including Figure 4-4 (between 4B-15 and 4B-16). Appendix C References. October.

Rocklin (City of) Economic and Community Development(**Rocklin/ECD**)

- 2016 New Project Information. Sierra Pine Subdivision, 4300 Dominquez Road (APN 045-011). Dated July 26, 2016.

## Sacramento Business Journal

- 2016 Information regarding Sierra Pacific Industries fiberboard plant, Rocklin. 11/17, 18/2011. Web accessed 12/02/2016.

Souza, Sharaya (Staff Services Analyst, Native American Heritage Commission) (**NAHC**)

- 2016 Letter to Mr. Colin I. Busby, Basin Research Associates, San Leandro, CA. Regarding: [Response to Request for Review of Sacred Lands Inventory], Sierra Pines Residential Development [4300 Dominquez Road, City of] Rocklin, Placer County. Dated December 9, 2016.

United States Department of Interior, Geological Survey (**USGS**)

- 1887-1888 Sacramento, Calif. Topographic map, 15-minute series. Detail in Barnett 2014/#012098).
- 1981 Rocklin, Calif. (Quadrangle). Topographic map, 7.5-minute series (1961 photorevised).
- 1994 Sacramento, California. 1:100,000 scale metric topographic map, 30' x 60' quadrangle. United States Geological Survey, Menlo Park.

United States Department of the Interior, National Register of Historical Places, National Park Service (**USNPS**)

- 2015a-e NRHP [National Register of Historic Places] Spreadsheet listings (as of July 2015). [www.NPS.gov/nr/research](http://www.NPS.gov/nr/research). Accessed 12/07/2016.

Wilson, Norman and Arlean H. Towne

1978 Nisenan. In *California*, edited by R.F. Heizer, Volume 8. *Handbook of North American Indians*, W.G. Sturtevant, general editor, pp. 387-397, Smithsonian Institution, Washington, D.C.

Windmiller, Ric (Consulting Archaeologist)

2014 4410 Granite Drive, Cultural Resources Assessment Rocklin, Placer County, California. MS #011489 on file, CHRIS/NCIC, CSU Sacramento.

Windmiller, Ric and Katherine Vallaire (Consulting Archaeologists)

2014 Sucker Ravine-Loomis Tributary "CLOMR" Cultural Resources Inventory and Evaluation, Rocklin, Placer County, California. MS #011482 on file, CHRIS/NCIC, CSU Sacramento.

WRA, Inc.

2016 Background Information Sierra Pine Subdivision (project), City of Rocklin, Placer County. On file, Basin Research Associates, San Leandro.

#### Abbreviations

n.d. no date

v.d. various dates

N.P. no publisher noted

n.p. no place of publisher noted

CHRIS/NCIC, CSU Sacramento is used for material on file at the California Historical Resources Information System, North Central Information Center, California State University Sacramento.

## **ATTACHMENTS**

### **FIGURES**

- FIGURE 1            General Project Location
- FIGURE 2            Project Location (USGS Rocklin, Calif. 1981)
- FIGURE 3            Aerial View of Project Area
- FIGURE 4            Project Area - Quaternary Deposits (USGS Sacramento 30' x  
60; Quadrangle, California, Gutierrez 2011)

### **CORRESPONDENCE**

- LETTER              Request to Native American Heritage Commission
- LETTER              Native American Heritage Commission Response
- LETTERS             Request to Native Americans Identified by Native American  
Heritage Commission

### **CHRIS/NCIC SEARCH**

- SEARCH              File No. PLA-16-125 (12/09/2016)

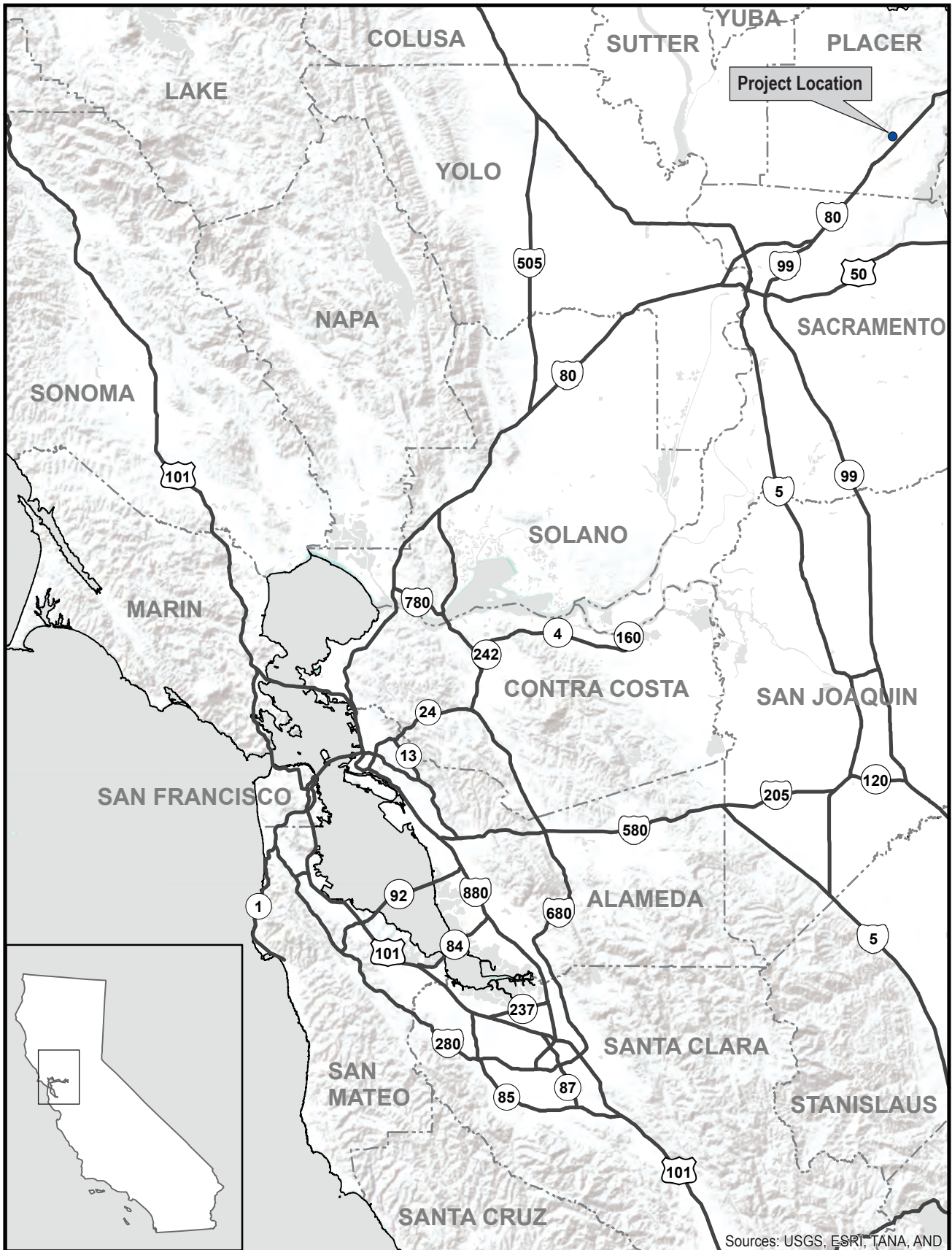


Figure 1: General Project Location

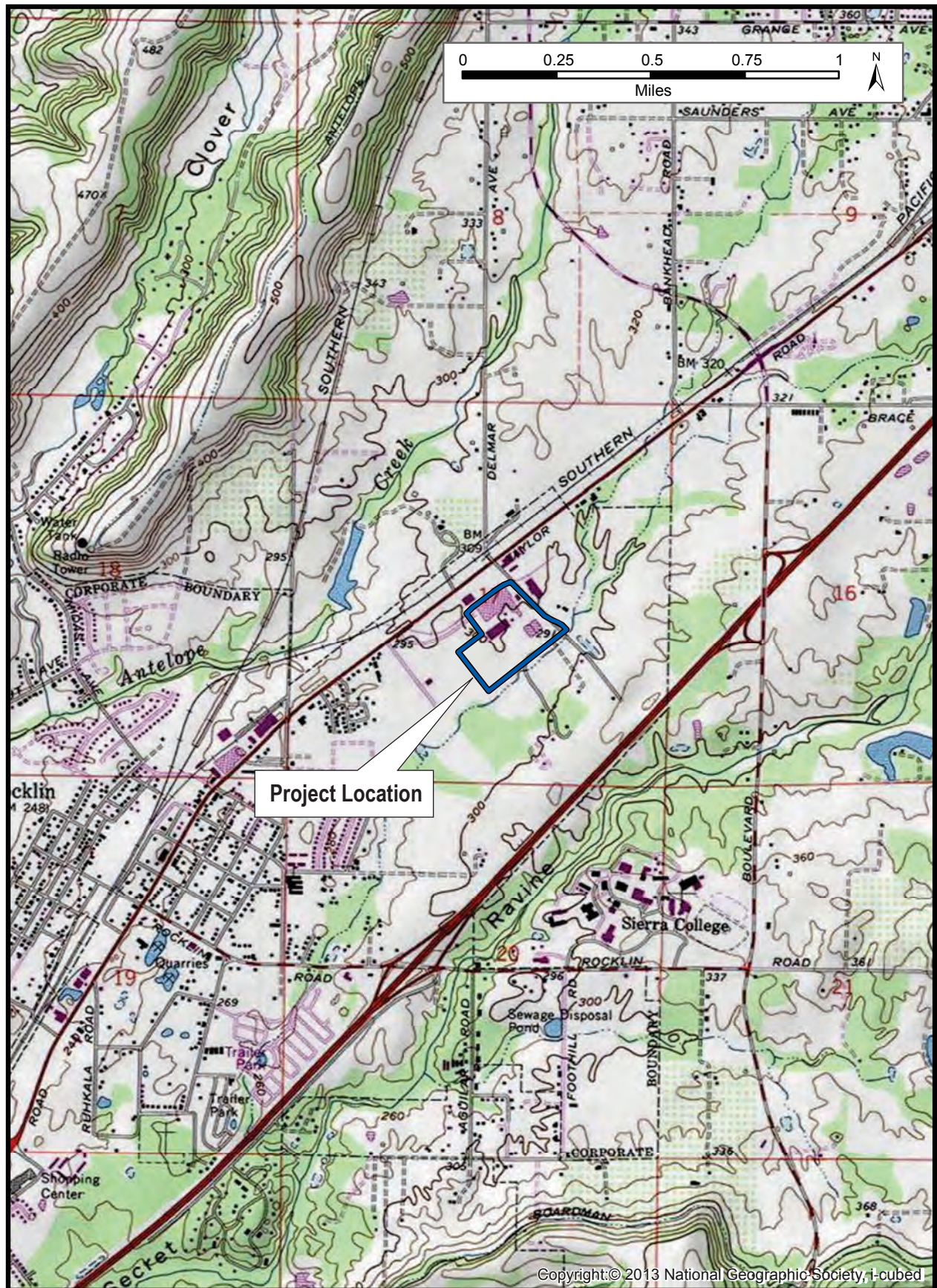


Figure 2: Project Location (USGS Rocklin, Calif. 1981)





Figure 3: Aerial View of Project Area

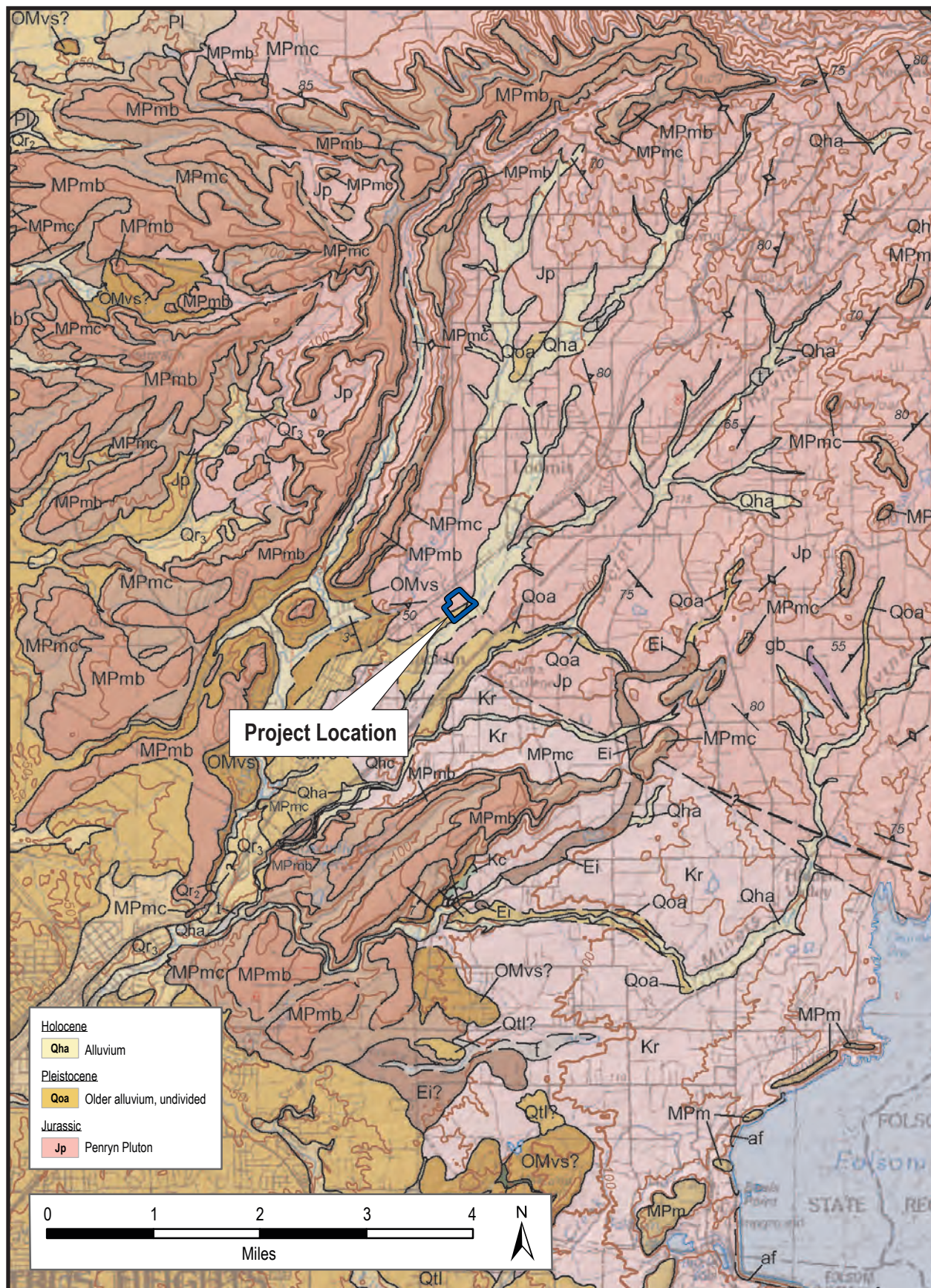


Figure 4: Project Area - Quaternary Deposits (Gutierrez 2011)

**Sacred Lands File & Native American Contacts List Request  
NATIVE AMERICAN HERITAGE COMMISSION**

1556 Harbor Boulevard, STE 100  
West Sacramento, CA 95691  
(916) 373-3710  
(916) 373-5471 – Fax  
nahc@nahc.ca.gov

*Information Below is Required for a Sacred Lands File Search*

**Project:** Sierra Pines Residential Development, 4300 Dominguez Road, City of Rocklin, Placer County

**County:** Placer County

**USGS Quadrangle Name:** USGS Rocklin, Calif. 1981

**Address:** 4300 Dominquez Road, Rocklin

**Township:** 11 North      **Range:** 7 West      Section 17

**Company/Firm/Agency:** Basin Research Associates

**Contact Person:** Colin I. Busby, PhD, RPA

**Street Address:** 1933 Davis Street, STE 210

**City/Zip:** San Leandro, CA 94577

**Phone:** (510) 430-8441 x202

**Fax:** Please send response to [basinresfax@gmail.com](mailto:basinresfax@gmail.com) or 510-430-8443

**Email:** basinres1@gmail.com

**Project Descriptions:**

The project proponent proposes to develop a residential subdivision on former heavy industrial zoned land in the City of Rocklin. The project site has been totally cleared and was formerly a fiberboard plant operated by Sierra Pacific Industries. The change from Industrial zoning to Residential zoning will require a General Plan amendment.

Information will be used for a Mitigated Negative Declaration under CEQA for the project.

12/07/2016

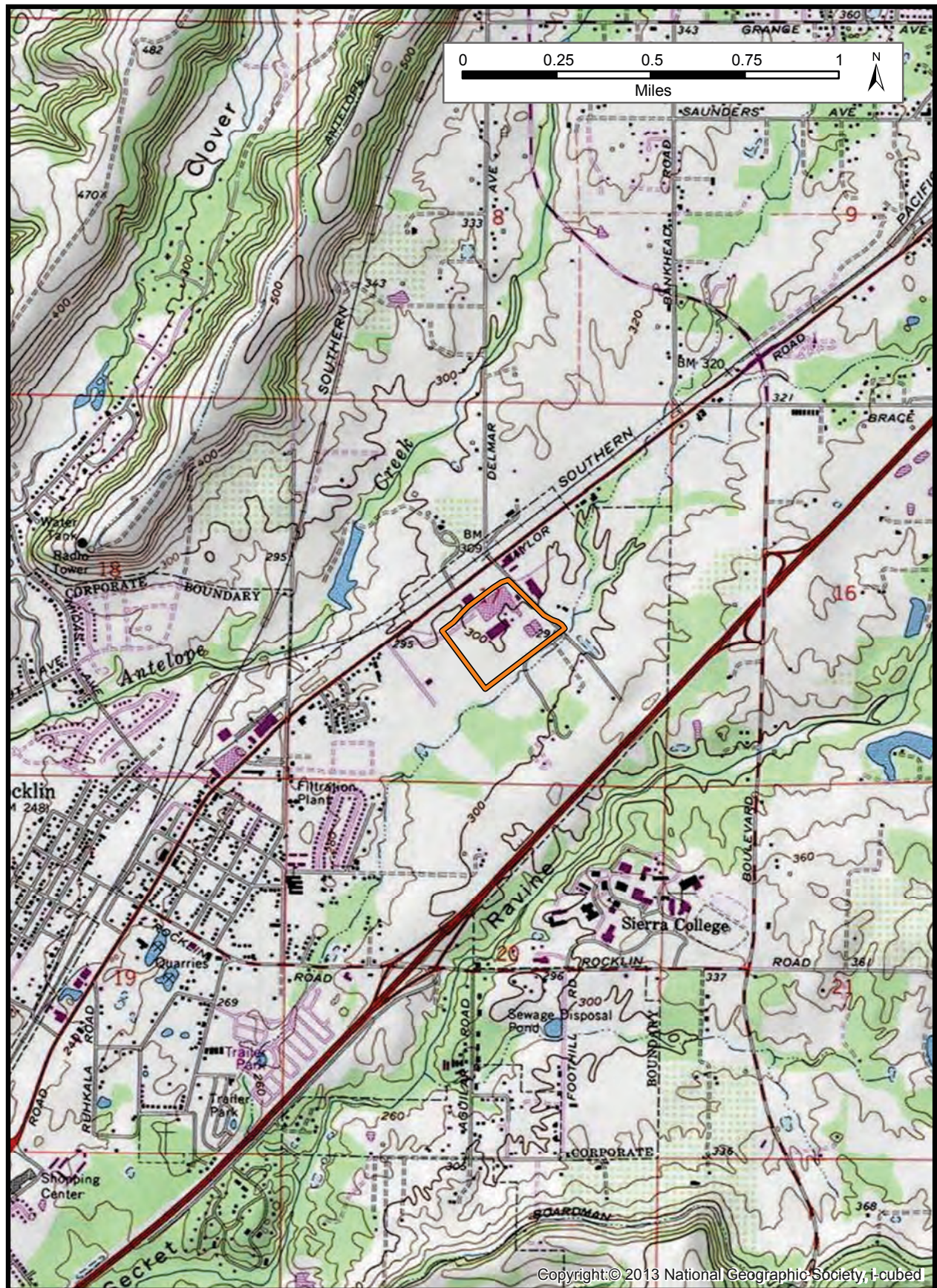


Figure 1: Project Location T11N R7E Sec. 17 (USGS Rocklin, Calif. 1981)

**NATIVE AMERICAN HERITAGE COMMISSION**

1550 Harbor Blvd., Suite 100  
West Sacramento, CA 95691  
(916) 373-3710  
Fax (916) 373-5471



December 9, 2016

Colin Busby  
Basin Research Associates

Sent by Email: basinres1@gmail.com  
Number of Pages: 2

RE: Sierra Pines Residential Development, Rocklin, Placer County

Dear Mr. Busby:

A record search of the Native American Heritage Commission (NAHC) *Sacred Lands File* was completed for the area of potential project effect (APE) referenced above with negative results. **Please note that the absence of specific site information in the *Sacred Lands File* does not indicate the absence of Native American cultural resources in any APE.**

I suggest you contact all of those listed, if they cannot supply information, they might recommend others with specific knowledge. The list should provide a starting place to locate areas of potential adverse impact within the APE. **By contacting all those on the list, your organization will be better able to respond to claims of failure to consult.** If a response has not been received within two weeks of notification, the NAHC requests that you follow-up with a telephone call to ensure that the project information has been received.

If you receive notification of change of addresses and phone numbers from any of these individuals or groups, please notify me. With your assistance we are able to assure that our lists contain current information. If you have any questions or need additional information, please contact via email: Sharaya.souza@nahc.ca.gov.

Sincerely,

A handwritten signature in blue ink, appearing to read "Sharaya Souza".

Sharaya Souza  
Staff Services Analyst

**Native American Contacts  
Placer County  
December 9, 2016**

Shingle Springs Band of Miwok Indians  
Nicholas Fonseca, Chairperson  
P.O. Box 1340                      Miwok  
Shingle Springs , CA 95682      Maidu  
nfonseca@ssband.org  
(530) 387-1400  
(530) 387-8067 Fax

Tsi Akim Maidu  
Grayson Coney, Cultural Director  
P.O. Box 1316                      Maidu  
Colfax , CA 95713  
tsi-akim-maidu@att.net  
(530) 383-7234

Tsi Akim Maidu  
Don Ryberg, Chairperson  
11442 Butler Road                Maidu  
Grass Valley , CA 95945  
tsi-akim-maidu@att.net  
(530) 210-7743

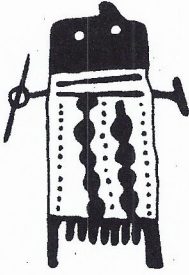
United Auburn Indian Community of the Auburn Rancheria  
Gene Whitehouse, Chairperson  
10720 Indian Hill Road            Maidu  
Auburn , CA 95603                Miwok  
(530) 883-2390 Office  
  
(530) 883-2380 Fax

Washoe Tribe of Nevada and California  
Darrel Cruz, Cultural Resources Department, THPO  
919 Highway 395 South            Washoe  
Gardnerville , NV 89410  
darrel.cruz@watshoetribe.us  
(775) 782-0014  
(775) 546-3421 Cell

This list is current only as of the date of this document and is based on the information available to the Commission on the date it was produced.

Distribution of this list does not relieve any person of statutory responsibility as defined in Section 7050.5 of the Health and Safety Code, Section 5097.94 of the Public Resource Section 5097.98 of the Public Resources Code

**This list is only applicable for contacting local Native Americans with regard to cultural resources assessments for Sierra Pines Residential Development, Rocklin, Placer County.**



December 9, 2016

**BASIN**  
RESEARCH  
ASSOCIATES

1933 DAVIS STREET  
SUITE 210  
SAN LEANDRO, CA 94577  
VOICE (510) 430-8441  
FAX (510) 430-8443

Nicolas Fonseca  
Chairperson  
Shingle Springs Band of Miwok Indians  
P.O. Box 1340  
Shingle Springs, CA 95682

RE: Request for Information - *Proposed Sierra Pines Residential Development, 4300 Dominguez Road, City of Rocklin, Placer County*

Dear Mr. Fonseca,

The Native American Heritage Commission has provided your name as an individual who may have information regarding Native American sites within or adjacent to the above proposed project (see enclosed USGS map).

The proposed project would develop a residential subdivision on a parcel at 4300 Dominguez Road formerly occupied by the Rocklin Sierra Pacific Industries fiberboard plant. The plant has been demolished and totally cleared. A General Plan amendment is required in order to change the zoning from Heavy Industrial to Residential.

Any information provided will be used to determine if significant resources may be affected by the proposed project as part of a Mitigated Negative Declaration under the California Environmental Quality Act (CEQA).

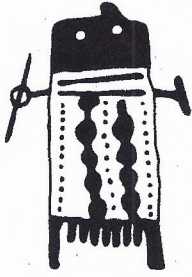
If I can provide any further information, please don't hesitate to contact me (510 430-8441 or [Basinres1@gmail.com](mailto:Basinres1@gmail.com)). Thank you for your timely review of our request.

Sincerely yours,  
BASIN RESEARCH ASSOCIATES, INC.,

Colin I. Busby, Ph.D., RPA  
Principal

CIB/dg

BASIN RESEARCH ASSOCIATES



December 9, 2016

**BASIN**  
RESEARCH  
ASSOCIATES

1933 DAVIS STREET  
SUITE 210  
SAN LEANDRO, CA 94577  
VOICE (510) 430-8441  
FAX (510) 430-8443

Grayson Coney  
Cultural Director  
T'si-Akim Maidu  
P.O. Box 1316  
Colfax, CA 95713

RE: Request for Information - *Proposed Sierra Pines Residential Development, 4300 Dominguez Road, City of Rocklin, Placer County*

Dear Mr. Coney,

The Native American Heritage Commission has provided your name as an individual who may have information regarding Native American sites within or adjacent to the above proposed project (see enclosed USGS map).

The proposed project would develop a residential subdivision on a parcel at 4300 Dominguez Road formerly occupied by the Rocklin Sierra Pacific Industries fiberboard plant. The plant has been demolished and totally cleared. A General Plan amendment is required in order to change the zoning from Heavy Industrial to Residential.

Any information provided will be used to determine if significant resources may be affected by the proposed project as part of a Mitigated Negative Declaration under the California Environmental Quality Act (CEQA).

If I can provide any further information, please don't hesitate to contact me (510 430-8441 or [Basinres1@gmail.com](mailto:Basinres1@gmail.com)). Thank you for your timely review of our request.

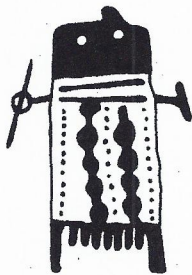
Sincerely yours,  
BASIN RESEARCH ASSOCIATES, INC.,

Colin I. Busby, Ph.D., RPA  
Principal

CIB/dg

BASIN RESEARCH ASSOCIATES





December 9, 2016

**BASIN**  
RESEARCH  
ASSOCIATES

1933 DAVIS STREET  
SUITE 210  
SAN LEANDRO, CA 94577  
VOICE (510) 430-8441  
FAX (510) 430-8443

Don Ryberg  
Chairperson  
T'si-Akim Maidu  
11442 Bulter Road  
Grass Valley, CA 95945

RE: Request for Information - *Proposed Sierra Pines Residential Development, 4300 Dominguez Road, City of Rocklin, Placer County*

Dear Mr. Ryberg,

The Native American Heritage Commission has provided your name as an individual who may have information regarding Native American sites within or adjacent to the above proposed project (see enclosed USGS map).

The proposed project would develop a residential subdivision on a parcel at 4300 Dominguez Road formerly occupied by the Rocklin Sierra Pacific Industries fiberboard plant. The plant has been demolished and totally cleared. A General Plan amendment is required in order to change the zoning from Heavy Industrial to Residential.

Any information provided will be used to determine if significant resources may be affected by the proposed project as part of a Mitigated Negative Declaration under the California Environmental Quality Act (CEQA).

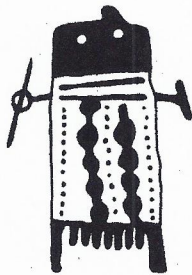
If I can provide any further information, please don't hesitate to contact me (510 430-8441 or [Basinres1@gmail.com](mailto:Basinres1@gmail.com)). Thank you for your timely review of our request.

Sincerely yours,  
BASIN RESEARCH ASSOCIATES, INC.,

Colin I. Busby, Ph.D., RPA  
Principal

CIB/dg

BASIN RESEARCH ASSOCIATES



December 9, 2016

**BASIN**  
RESEARCH  
ASSOCIATES

1933 DAVIS STREET  
SUITE 210  
SAN LEANDRO, CA 94577  
VOICE (510) 430-8441  
FAX (510) 430-8443

Gene Whitehouse  
Chairperson  
United Auburn Indian Community of the Auburn Rancheria  
10720 Indian Hill Road  
Auburn, CA 95603

RE: Request for Information - *Proposed Sierra Pines Residential Development, 4300 Dominguez Road, City of Rocklin, Placer County*

Dear ,

The Native American Heritage Commission has provided your name as an individual who may have information regarding Native American sites within or adjacent to the above proposed project (see enclosed USGS map).

The proposed project would develop a residential subdivision on a parcel at 4300 Dominguez Road formerly occupied by the Rocklin Sierra Pacific Industries fiberboard plant. The plant has been demolished and totally cleared. A General Plan amendment is required in order to change the zoning from Heavy Industrial to Residential.

Any information provided will be used to determine if significant resources may be affected by the proposed project as part of a Mitigated Negative Declaration under the California Environmental Quality Act (CEQA).

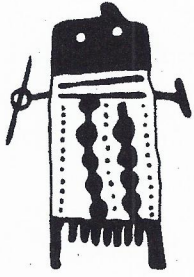
If I can provide any further information, please don't hesitate to contact me (510 430-8441 or [Basinres1@gmail.com](mailto:Basinres1@gmail.com)). Thank you for your timely review of our request.

Sincerely yours,  
BASIN RESEARCH ASSOCIATES, INC.,

Colin I. Busby, Ph.D., RPA  
Principal

CIB/dg

BASIN RESEARCH ASSOCIATES



December 9, 2016

**BASIN**  
RESEARCH  
ASSOCIATES

1933 DAVIS STREET  
SUITE 210  
SAN LEANDRO, CA 94577  
VOICE (510) 430-8441  
FAX (510) 430-8443

Darrel Cruz  
Tribal Historic Preservation Officer  
Cultural Resources Department  
Washoe Tribe of Nevada and California  
919 Highway 395 South  
Gardnerville, NV 89410

RE: Request for Information - *Proposed Sierra Pines Residential Development, 4300 Dominguez Road, City of Rocklin, Placer County*

Dear Mr. Cruz,

The Native American Heritage Commission has provided your name as an individual who may have information regarding Native American sites within or adjacent to the above proposed project (see enclosed USGS map).

The proposed project would develop a residential subdivision on a parcel at 4300 Dominguez Road formerly occupied by the Rocklin Sierra Pacific Industries fiberboard plant. The plant has been demolished and totally cleared. A General Plan amendment is required in order to change the zoning from Heavy Industrial to Residential.

Any information provided will be used to determine if significant resources may be affected by the proposed project as part of a Mitigated Negative Declaration under the California Environmental Quality Act (CEQA).

If I can provide any further information, please don't hesitate to contact me (510 430-8441 or [Basinres1@gmail.com](mailto:Basinres1@gmail.com)). Thank you for your timely review of our request.

Sincerely yours,  
BASIN RESEARCH ASSOCIATES, INC.,

Colin I. Busby, Ph.D., RPA  
Principal

BASIN RESEARCH ASSOCIATES

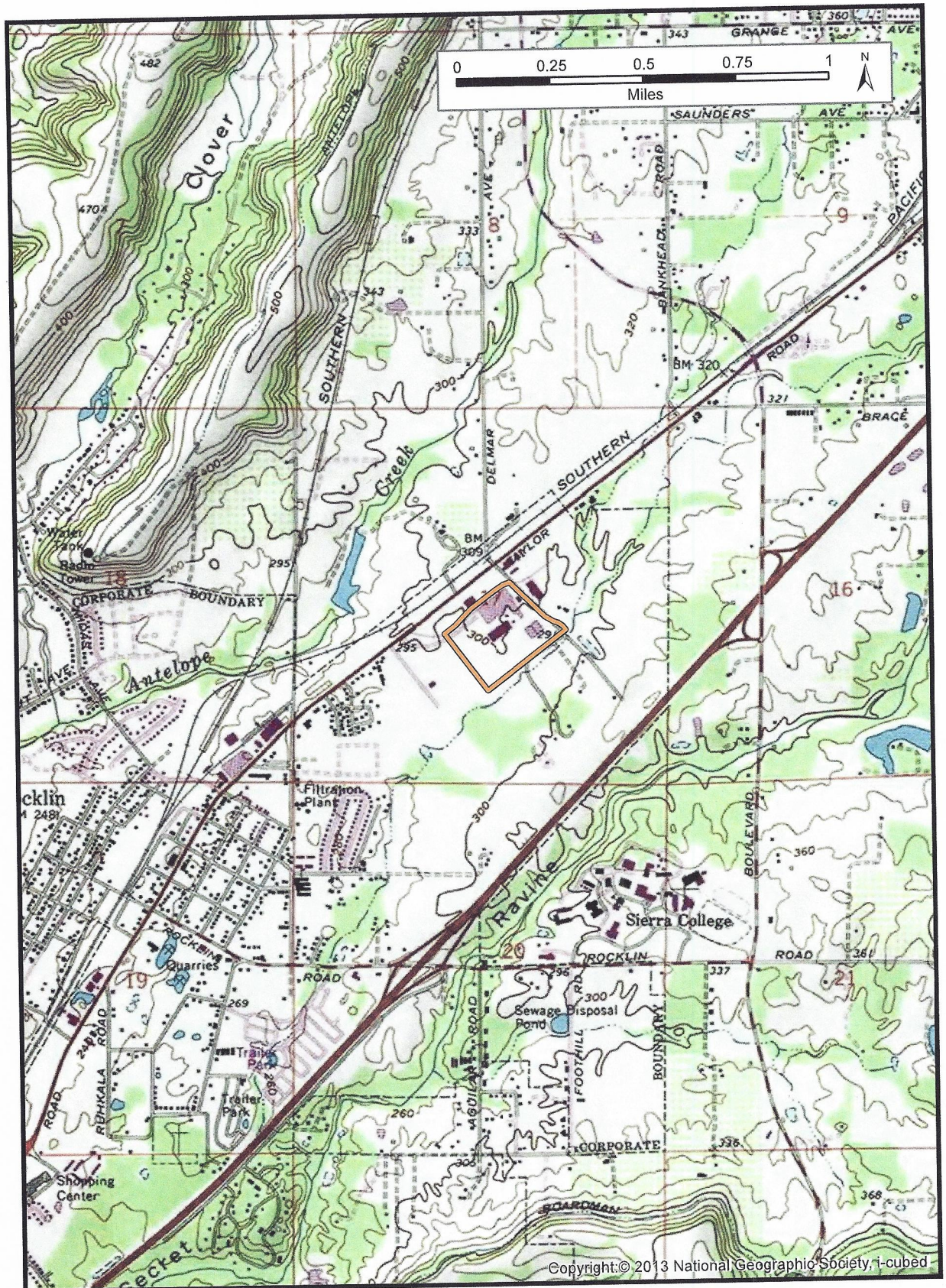


Figure 1: Project Location T11N R7E Sec. 17 (USGS Rocklin, Calif. 1981)



SHINGLE SPRINGS RANCHERIA  
P.O. BOX 1340; SHINGLE SPRINGS, CA 95682  
(530) 676-8010; FAX (530) 676-3582

December 14, 2016

Basin Research Associates  
1933 Davis Street, Suite 210  
San Leandro, CA 94577

RE: Proposed Sierra Pines Residential Development, 4300 Dominguez Road, City of Rocklin

Dear Colin I. Busby

Thank you for your letter dated December 9, 2016 in regard to the above mentioned project. Based on the information provided, the Shingle Springs Band of Miwok Indians is not aware of any known cultural resources on this site. However, SSR would like to have continued consultation through updates, as the project progresses this will foster a greater communication between the Tribe and your agency.

SSR would also like to request any and all completed record searches and or surveys that were done in or around the project area up to and including environmental, archaeological and cultural reports.

If during the progress of the project new information or human remains are found we would like to be able to go over our process with you that we currently have in place to protect such important and sacred artifacts (especially near rivers and streams).

Please contact the following individuals if such finds are made:

Kara Perry, Cultural Outreach Coordinator (530) 488-4049 [kperry@ssband.org](mailto:kperry@ssband.org)

And copy all communications to:  
Daniel Burnett, Lead Native American Inspector [dburnett@ssband.org](mailto:dburnett@ssband.org)

Thank you for providing us with this notice and opportunity to comment.

Sincerely,

Daniel Fonseca  
Tribal Historic Preservation Officer (THPO)  
Most Likely Descendant (MLD)

**From:** Melodi McAdams [<mailto:mmcadams@auburnrancheria.com>]

**Sent:** Thursday, December 29, 2016 4:45 PM

**To:** [basinres1@gmail.com](mailto:basinres1@gmail.com)

**Cc:** Marcos Guerrero; Matthew Moore; David Mohlenbrok

**Subject:** Request for Information - Proposed Sierra Pines Residential Development at 4300 Dominguez Road, City of Rocklin

Dear Principal Busby,

Thank you for your letter received on 12/13/2016 (Sierra Pines Residential Development at 4300 Dominguez Road, City of Rocklin). Your letter referenced both a general plan amendment (SB 18) and a CEQA MND. Can you please clarify whether you are contacting our office as part of SB 18 consultation, AB 52 Consultation under CEQA, or Tribal Consultation under CEQA? Please also confirm where this project is at in the CEQA process?

I look forward to your response.

Sincerely,

Melodi McAdams

Cultural Resources Associate

Tribal Historic Preservation Department

United Auburn Indian Community of the Auburn Rancheria

10720 Indian Hill Road

Auburn, CA 95603

(530) 328-1109 - office

(530) 401-7470 - cell



12/9/2016

NCIC File No.: PLA-16-125

Donna M. Garaventa  
Basin Research Associates  
1933 Davis Street, Suite 210  
San Leandro, CA 94577

Re: Sierra Pine

The North Central Information Center received your record search request for the project area referenced above, located on the Rocklin USGS 7.5' quad. The following reflects the results of the records search for the project area and a 250-foot radius.

As indicated on the data request form, the locations of resources and reports are provided in the following format:  custom GIS maps  shapefiles

Resources within project area:	none
Total number of resources within search area:	1
Reports within project area:	11482 12098
Total number of reports within search area:	4

**Resource Database Printout (list):**  enclosed  not requested  nothing listed/NA

**Resource Database Printout (details):**  enclosed  not requested  nothing listed/NA

**Resource Digital Database Records:**  enclosed  not requested  nothing listed/NA

**Report Database Printout (list):**  enclosed  not requested  nothing listed/NA

**Report Database Printout (details):**  enclosed  not requested  nothing listed/NA

**Report Digital Database Records:**  enclosed  not requested  nothing listed/NA

**Resource Record Copies:**  enclosed  not requested  nothing listed/NA

**Report Copies:**  enclosed  not requested  nothing listed/NA

**OHP Historic Properties Directory:**             enclosed    not requested    nothing listed/NA

**Archaeological Determinations of Eligibility:**  enclosed    not requested    nothing listed/NA

**CA Inventory of Historic Resources (1976):**    enclosed    not requested    nothing listed/NA

**Caltrans Bridge Survey:**                         enclosed    not requested    nothing listed/NA

**Ethnographic Information:**                     enclosed    not requested    nothing listed/NA

**Historical Literature:**                             enclosed    not requested    nothing listed/NA

**Historical Maps:**                                     enclosed    not requested    nothing listed/NA

**Local Inventories:**                                 enclosed    not requested    nothing listed/NA

**GLO and/or Rancho Plat Maps:**                 enclosed    not requested    nothing listed/NA

**Shipwreck Inventory:**                             enclosed    not requested    nothing listed/NA

**Soil Survey Maps:**                                 enclosed    not requested    nothing listed/NA

Please forward a copy of any resulting reports from this project to the office as soon as possible. Due to the sensitive nature of archaeological site location data, we ask that you do not include resource location maps and resource location descriptions in your report if the report is for public distribution. If you have any questions regarding the results presented herein, please contact the office at the phone number listed above.

The provision of CHRIS Data via this records search response does not in any way constitute public disclosure of records otherwise exempt from disclosure under the California Public Records Act or any other law, including, but not limited to, records related to archeological site information maintained by or on behalf of, or in the possession of, the State of California, Department of Parks and Recreation, State Historic Preservation Officer, Office of Historic Preservation, or the State Historical Resources Commission.

Due to processing delays and other factors, not all of the historical resource reports and resource records that have been submitted to the Office of Historic Preservation are available via this records search. Additional information may be available through the federal, state, and local agencies that produced or paid for historical resource management work in the search area. Additionally, Native American tribes have historical resource information not in the California Historical Resources Information System (CHRIS) Inventory, and you should contact the California Native American Heritage Commission for information on local/regional tribal contacts.

Should you require any additional information for the above referenced project, reference the record search number listed above when making inquiries. Requests made after initial invoicing will result in the preparation of a separate invoice.

Sincerely,

Nathan Hallam, Coordinator  
North Central Information Center