

QUARRY DISTRICT

Rocklin's History and Future

VISION

The Quarry District is Rocklin's gathering place. It is becoming a destination for residents and visitors with a focus on entertainment, arts and food. Rocklin envisions both public and private investment with a mix of uses including housing, commercial, community public space, parks and recreational areas.

PROJECTS

Public development is well underway with front street enhancements, a new police station and the completion of Phase 1 of Quarry Park. Future plans include a possible public market, an adventure park in Big Gun Quarry, and private mixed-use infill development creating a safe, pedestrian-friendly environment.

PROPERTIES

Rocklin has a vision for the Quarry District and is looking for the right investors to purchase and develop three key available properties. Sites include the Big Gun site in Quarry Park, land at the corner of Rocklin Road and Pacific Street, and the Oak-Pine-Pacific Property. All three are city-owned, for sale and zoning changes can be considered.



Contact: Troy Holt
Director of Communications and Commerce
3970 Rocklin, Road
Rocklin, CA 95677 USA

T: +1 916 625 5565
troy.holt@rocklin.ca.us

READ MORE

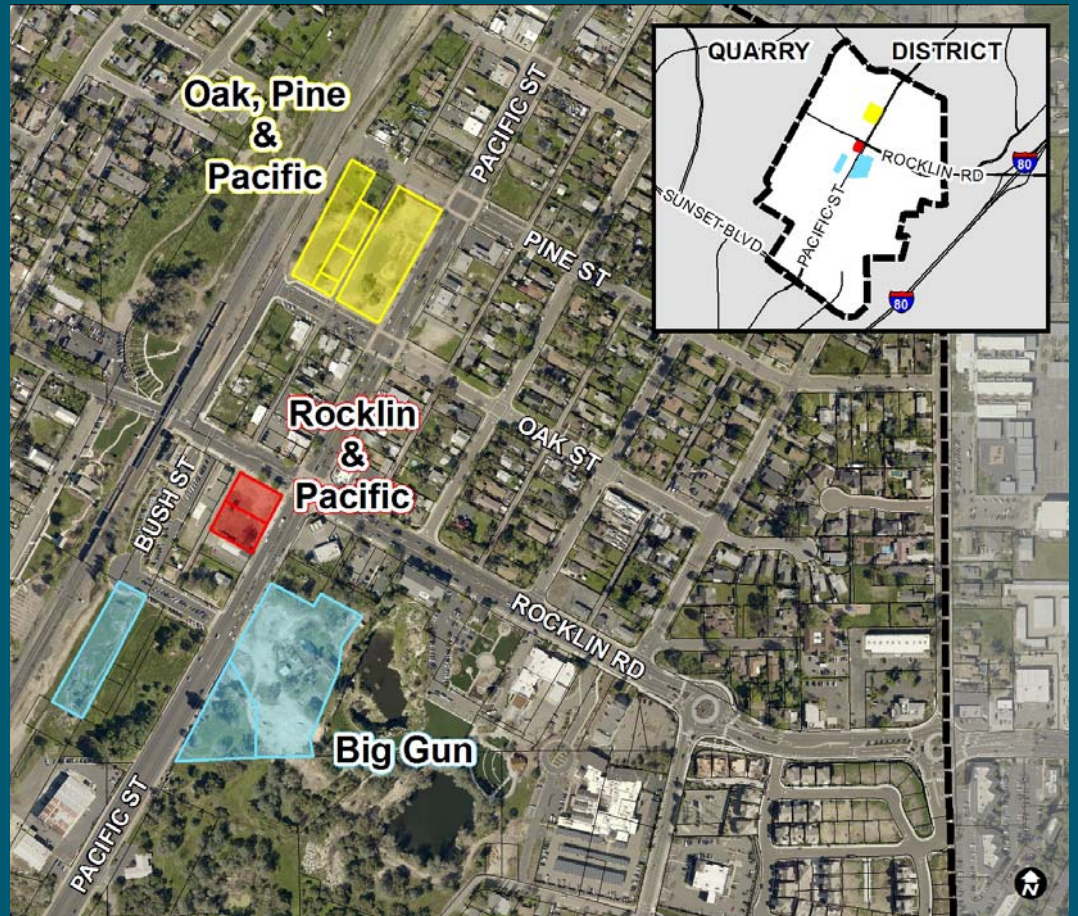


Big Gun Property

Location: Adjacent to the Big Gun Quarry and Quarry Park, the Big Gun site is in the heart of the Quarry District and provides an excellent opportunity for interested parties to leverage Rocklin's reinvestment in the area and influence future projects.

Access is from Pacific Street.

Size: 3.99 total acres on the south side of Pacific Street with 0.99 acres on the north side of Pacific Street.



Rocklin Road and Pacific Street Property

Location: This highly accessible site sits on the Southwest corner of Rocklin Road and Pacific Street – a prominent intersection near Quarry Park and an Amtrak station. It also is located near the head of a city-planned walking corridor between Front Street and Johnson-Springview Park.

Size: 0.68 total acres

Oak-Pine-Pacific Property

Location: This land sits on the west side of Pacific Street between Oak and Pine Streets. The site of an old Rocklin school, mixed-use infill here along with other Quarry District efforts could catalyze the area and continue to brand it as Rocklin's new and historic town center.

Size: 2.55 total acres