

# ANDREGG, INC.

SURVEYING • MAPPING • GEOMATICS

## STATION DESCRIPTION & SKETCH

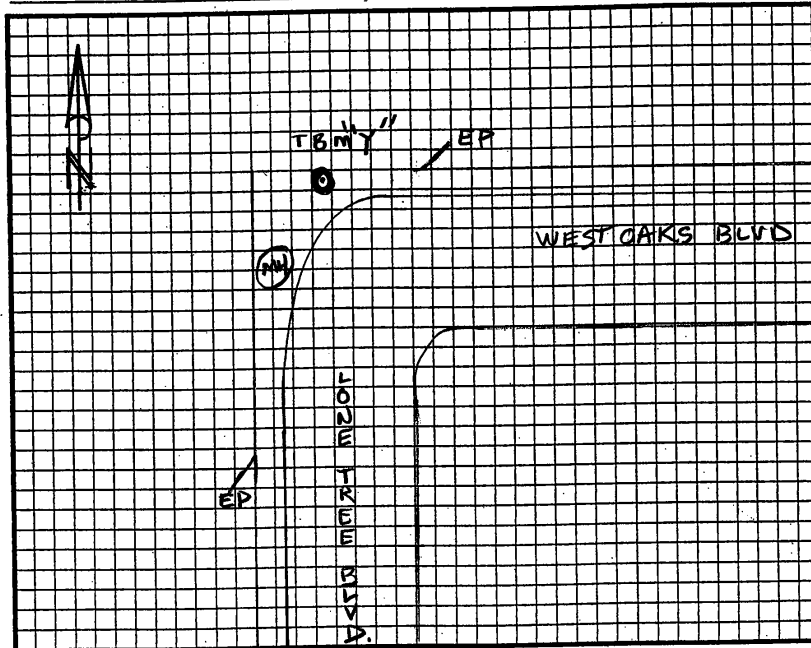
JN 11559-00 - Project Name: CITY OF ROCKLIN CONTROL NETWORK

QUADRANGLE NAME: Roseville STATION NAME: TBM "Y" (R940)

Approximate Latitude: 38° 48' 36.66" N Approximate Longitude: 121° 17' 33.40" W

Described by: PETER BALDO Date: 4/2/03

To reach the point HWY 65 TO SUNSET BLVD EAST TO INTX  
OF WEST OAKS BLVD AND SUNSET BLVD. GO  
WEST ON WEST OAKS BLVD TO END OF PAVEMENT.  
(INTX OF LONETREE BLVD. AND WEST OAKS BLVD.  
PT. ON RIGHT.



The point is marked by 2 1/2" BRASS DISK W MARK and is .60' BELOW the ground.  
STAMPED L.S. 5250 IN CONCRETE IN MON. WELL.  
1' SOUTH OF NORTH PAVEMENT WEST OAKS BLVD.  
(+OR-) 60' E. OF END PAVEMENT WEST OAKS BLVD.  
18' NORTH EAST OF S.D. MH.