

## Appendix C

# APPENDIX C

## REFERENCES

- Aubury, Lewis E., *The Structural and Industrial Materials of California*, California State Mining Bureau, San Francisco, 1906
- Beals, Ralph L., *University of California Publications in American Archaeology and Ethnology* 31(6):335-413, *Ethnology of the Nisenan*, Berkeley, 1933.
- California Department of Conservation, *Farmland Mapping and Monitoring Program, Farmland Maps for Placer County*, 1998.
- California Department of Finance, *Demographic Research Unit, California State Census Data Center, Census 2000 PL94-171, Table Two Population by Race/Ethnicity Incorporated Cities by County*.
- California Department of Finance, *E-1 City/County Population Estimates, with Annual Percent Change, January 1, 2000 and 2001*, Sacramento, California, May 2001.
- California, Department of Finance, *E-2 County Population Estimates and Components of Change, July 1, 2000-2001, with Historical Estimates, 1990-2000*, Sacramento, California, January 2002.
- California Department of Finance, *E-5 City/County Population and housing Estimates 2000 and 2001*.
- California Department of Finance, *Demographic Research Unit, Historical US Census Population of Places, Towns, and Cities in California, 1850-1990*.
- California Department of Finance, *Demographic Research Unit, Interim County Population Projections, Estimated July1, 2000 and Projections for 2005, 2010, 2015, 2020*, June 2001.
- California Department of Fish and Game, *California Natural Diversity Database, RareFind 2 report*, January 18, 2002.
- California Department of Fish and Game, *Habitat Conservation Planning Branch, Species accounts*, February 4, 2002. [http://www.dfg.ca.gov/hcpb/species/search\\_species.shtml](http://www.dfg.ca.gov/hcpb/species/search_species.shtml)
- California Department of Housing and Community Development, *California Statewide Housing Plan, Raising the Roof*, May 2000.
- California Department of Parks and Recreation, *California Historical Landmarks*, State Printing Office, Sacramento , 1990

California Geological Survey, Special Publication 42, Alquist-Priolo Earthquake Fault Zones, 1997.

California Resources Solid Waste Solutions, City of Rocklin Source Reduction and Recycling Element, March 31, 1993

Chavez, David, Cultural Resources Evaluation for the Rocklin West Master EIR and the Northwest Rocklin Master EIR, Placer County, California, Ms. on file, North Central Information Center, California State University, Sacramento, 1982.

City of Rocklin Community Development Department and Harland Bartholomew & Associates, Inc., Draft Environmental Impact Report for the Rocklin Civic Center Plan, December, 1994.

City of Rocklin Community Development Department and Harland Bartholomew & Associates, Inc., Final Rocklin Civic Center Plan, December 1994.

City of Rocklin Community Development Department, Reprint of Title 17 Zoning Ordinance, September, 2000.

City of Rocklin Community Services and Facilities, City of Rocklin Parks and Facilities, 2001.

City of Rocklin, General Plan, April 1991.

City of Rocklin, Rocklin Historical Society, Rocklin Historical Society Tour of Historical Points of Interest, No Date.

Crawford Multari & Starr, et.al., Placer County General Plan Update Draft Environmental Impact Report, October 1, 1993.

Dames & Moore, Comprehensive Land Use Element Update Project Draft Environmental impact Report for the City of Roseville, February, 1995.

Davy, Douglas M., Cultural Resources Site Evaluation for the Stanford Oaks Project. Ms. on file, North Central Information Center, California State University, Sacramento, 1989.

Economic & Planning Systems, Inc., Rocklin Unified School District Facilities Master Plan, February, 2000.

EIP Associates, Granite Lakes Estates Draft Environmental Impact Report, October, 2001.

EIP Associates, Northwest Rocklin Annexation (Sunset Ranchos) Draft Environmental Impact Report, October, 2001.

Elston, Robert G., Jonathan O. Davis, Alan Levanthal, and Cameron Covington, The Archeology of the Tahoe Reach of the Truckee River: A Report to the Tahoe-Truckee Sanitation Agency,

- Ms. on file, University of Nevada Northern Division of the Nevada Archaeological Survey, Reno, 1977.
- Erskian, Malcolm G. and Eric W. Ritter, Nisenan Ethnobotany Notes, In Papers on Nisenan Environment and Subsistence, Edited by Eric W. Ritter and Peter D. Schulz., Center for Archaeological Research at Davis, Publication Number 3:28-31, University of California, Davis, 1972.
- Federal Emergency Management Agency, Flood Insurance Rate Maps 06061C0414F, 06061C0412F, 06061C0477F, 06061C0418F, June 1998.
- Gray, Harold Farnsworth, and Russel E. Fontaine, A History of Malaria in California, Proceedings of the California Mosquito and Vector Control Association 25:18-39, Sacramento, 1951.
- Gudde, Erwin G., California Gold Camps, University of California Press, Berkeley, 1975.
- Heizer, Robert F., and Albert B. Elsasser, Some Archaeological Sites and Cultures of the Central Sierra Nevada, University of California Archaeological Survey Reports 21:1-42. Berkeley, 1953.
- Hoover, Mildred, Hero E. Rensch, Ethel G. Rensch and William N. Abeloe, Historic Spots in California (Fourth Edition), revised by Douglas E. Kyle. Stanford University Press, Stanford, 1990.
- Placer County Flood Control and Water Conservation District and Sacramento County Water Agency, Dry Creek Watershed Flood Control Plan, April 1992.
- Placer County Flood Control and Water Conservation District, Stormwater Management Manual, 1990.
- Jones & Stokes Associates, Inc., Dry Creek Watershed Flood Control Program
- Jordan, Terry G., North American Cattle-Raising Frontiers: Origin, Diffusion, and Differentiation, University of New Mexico Press, Albuquerque, 1993.
- Kroeber, Alfred L., The Valley Nisenan, University of California Publications in American Archaeology and Ethnology 24(4):253-290. Berkeley 1929.
- Kroeber, Alfred L., Handbook of the California Indians, California Book Company, Ltd., Berkeley, 1953.
- Lardner, W.B. and M.J. Brock, History of Placer and Nevada Counties, California. Historic Record Company, Los Angeles, 1924.
- Littlejohn, H.W., Nisenan Geography. Ms. on file, Department of Anthropology Archives, Document 18, Bancroft Library, University of California, Berkeley, 1928.

- Loomis Union School District, District Map, Class Counts 2001/2001 As of 02/22/02, and Website, <http://www.loomis-usd.k12.ca.us/index.htm>
- Matson, R. G., Pollen from the Spring Garden Site (4-Pla-101), In Papers on Nisenan Environment and Subsistence, edited by Eric Ritter and Peter Schulz, pp. 24-27, Center for Archaeological Research Davis, Publication 3, Davis, 1970.
- McDannold, Thomas A., California's Chinese Heritage: A Legacy of Places, Heritage West Books, Stockton, 2000
- Miller, Richard A. (Bob), Fortune Built by Gun: The Joel Parker Whitney Story, The Mansion Publishing Company, Walnut Grove, 1969.
- National Audubon Society, Watch list, February 5, 2002. <http://www.audubon.org/bird/watch/list.html>
- Noble, Daryl G., An Intensive Archeological Survey of the Proposed Safeway Shopping Center, Rocklin, Placer County, California, Ms. on file, North Central Information Center, California State University, Sacramento, 1978.
- Peak & Associates, Cultural Resource Assessment of a 30 Acre Property on Granite Drive, City of Rocklin, Ms. on file, North Central Information Center, California State University, Sacramento, 1990.
- Placer County Transportation Planning Agency, Placer County Regional Transportation Plan 2022, December, 2001.
- Placer Union High School District, Website and Personnel Communication 2/25/02, <http://www.puhsd.k12.ca.us/>
- R. C. Fuller Associates, Sunset West General Development Plan Draft Environmental Impact Report, January, 1995.
- Roy Ruhkala, History of Rocklin, California, 1975.
- Sacramento Area Council of Governments, City of Rocklin General Plan Update Draft Environmental Impact Report, September, 1990.
- Sierra College, Website and personnel communication 2/27/02, <http://www.sierra.cc.ca.us>
- South Placer Municipal Utilities District, SPMUD's Sewer master Plan, 1986.
- Transportation Research Board, Highway Capacity manual – Special Report 209, 1994.
- Transportation Research Board, Interim materials on Highway Capacity – Circular 212, 1980.

Wilson, Norman L., Miscellaneous Unpublished Field Notes, Maps and Files, Ms. in Norman Wilson's possession, Auburn, No Date.

Wilson, Norman L., The Nisenan, Phantom Press, Sacramento, 1982.

Wilson, Norman L. and Arlene Towne, Nisenan In: Handbook of North American Indians: California, Volume 8, edited by Robert F. Heizer. William G. Sturtevant, general editor, Smithsonian Institution, Washington, D. C., 1978.

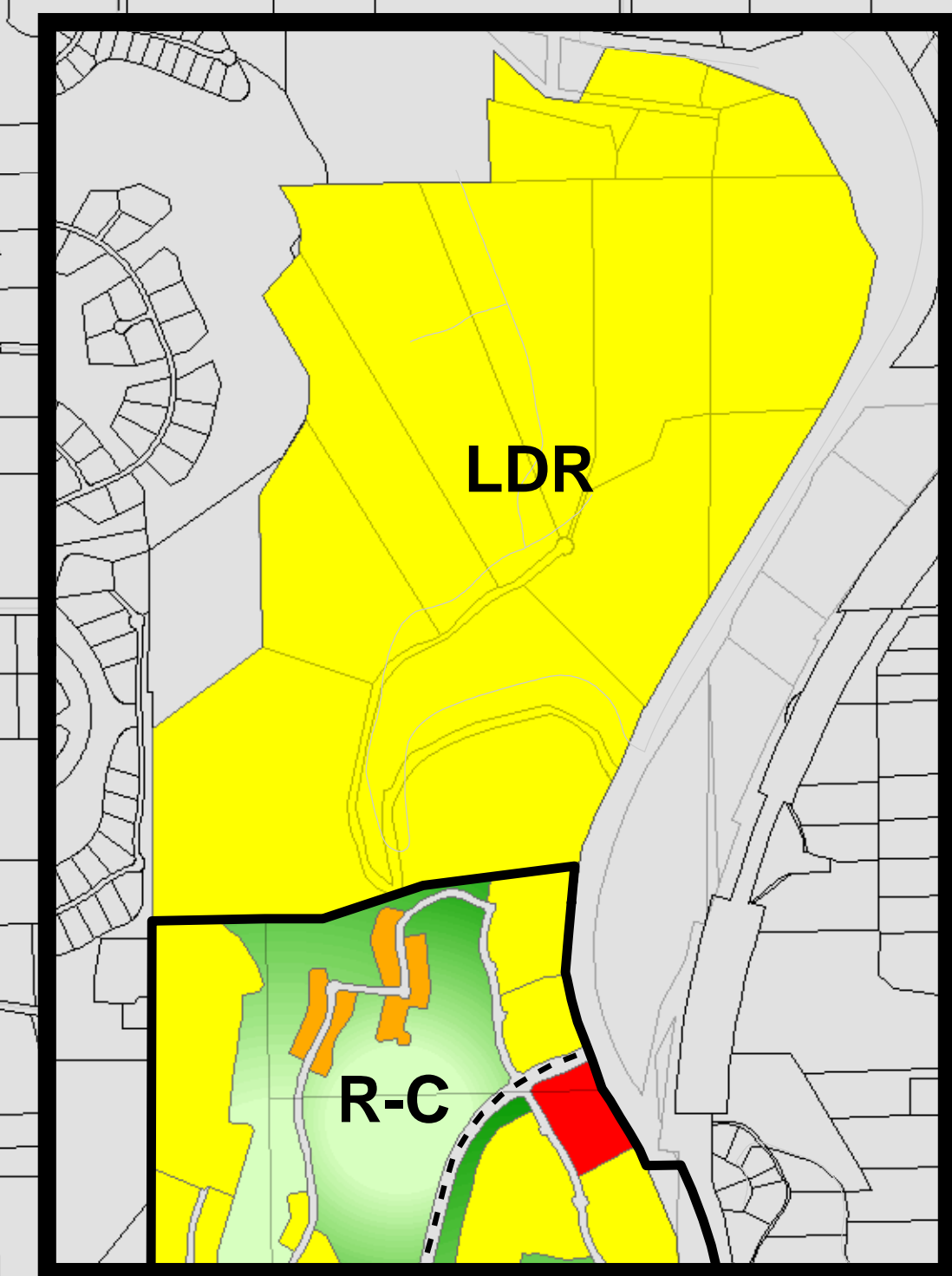
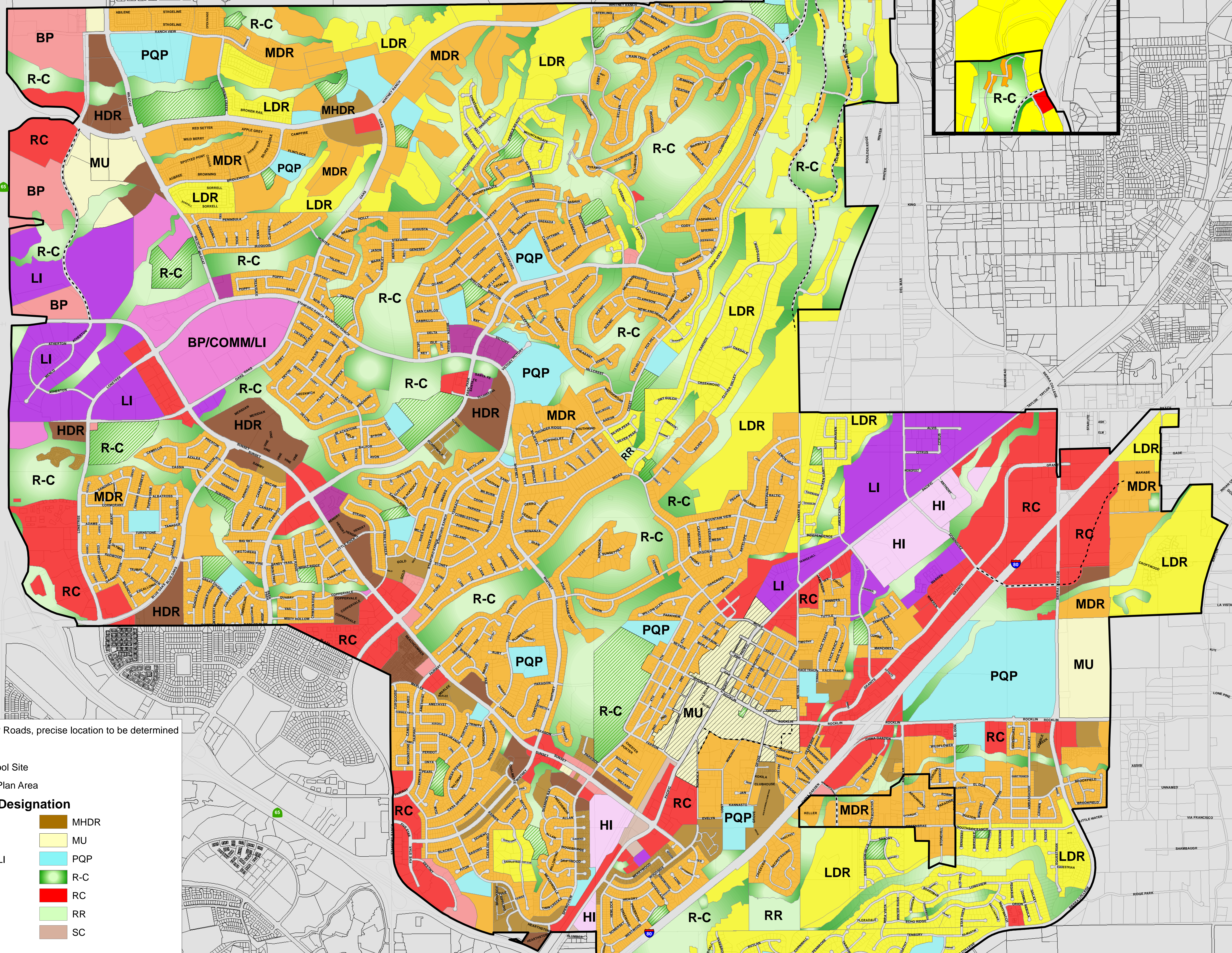
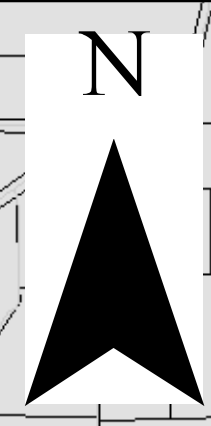
United States Army Corps of Engineers, Wetlands Delineation Manual, 1987.

United States Department of Agriculture, Soil Conservation Service, Soil Survey of Placer County, California Western Part, July, 1980.

United States Fish and Wildlife Service, Endangered and Threatened Species that May Occur in or be Affected by Projects in the Rocklin and Roseville 7.5 Quadrangles, January 23, 2002.



# City of Rocklin General Plan



- - - - Planned GP Roads, precise location to be determined  
 Parks  
 Future School Site  
 Downtown Plan Area

**General Plan Designation**

BP	MHDR
BP/COMM	MU
BP/COMM/LI	PQP
HDR	R-C
HI	RC
LDR	RR
LI	SC
MDR	