



**AGENDA
CITY OF ROCKLIN
ART TASK FORCE MEETING
SPECIAL MEETING**

April 23, 2018

TIME: 5:00 PM

PLACE: City of Rocklin Council Chambers

www.rocklin.ca.us

CITIZENS ADDRESSING THE COMMISSION

Citizens may address the Commission on any items on the agenda at the time the item is considered. Citizens wishing to speak may request recognition from the Chairperson by raising their hand and stepping to the podium when requested to do so. Speakers will usually be allowed five (5) minutes; however, the Chairperson may set shorter time limits. Speakers are asked to identify themselves by stating their name and the city they reside in for the official record.

ACCOMMODATING THOSE INDIVIDUALS WITH SPECIAL NEEDS

In compliance with the Americans with Disabilities Act, the City of Rocklin encourages those with disabilities to participate fully in the public hearing process. If you have a special need in order to allow you to attend or participate in our public meeting and public hearing processes, including receiving notices, agendas, and other writings in appropriate alternative formats, please contact our office at (916) 625-5560 well in advance of the public meeting or public hearing you wish to attend so that we may make every reasonable effort to accommodate you.

INTRODUCTION

1. **Call to Order:**

2. **Pledge of Allegiance:**

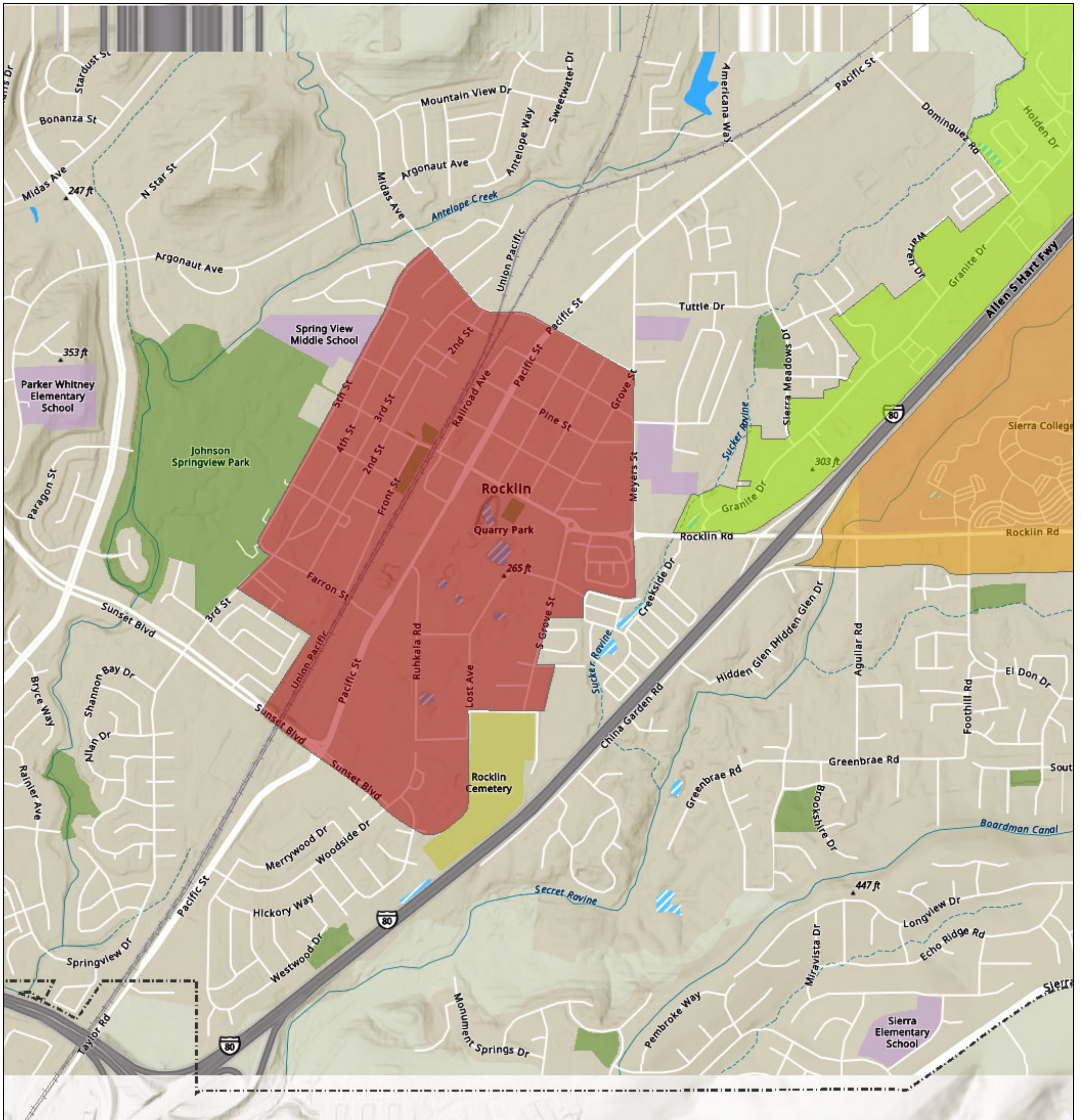
3. **Roll Call:**

Any writing related to an agenda item for the open session of this meeting distributed to the Recreation Commission less than 72 hours before this meeting is available for inspection at City Hall, 3980 Rocklin Road, Rocklin, during normal business hours. These writings will also be available for review at the Parks and Recreation Commission meeting in the public access binder located on the table at the back of the Chambers.

4. Discussion Items:

- A. Off the Rails Update
- B. Art Task Force Activities - 2018
- C. Big Gun Art Project - dates and next steps
- D. The Arts Council of Placer County
- E. Placer Herald - ATF Artical

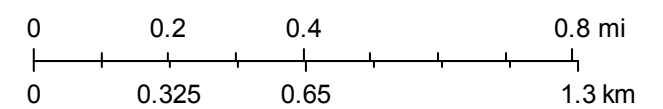
5. Adjournment:



04/09/2018 12:23:02 PM

1:18,056

- City of Rocklin Boundary
- University
- Granite
- College
- Quarry



City of Rocklin
Sources: Esri, USGS, NGA, NASA, CGIAR, N Robinson, NCEAS, NLS, OS, NMA, Geodatastyrelsen, Rijkswaterstaat, GSA, Geoland, FEMA, Intermap and the GIS user community