

Submitting Agency:



Associated Lighting Reps, Inc

Description: **DOSB1-018-VPA-BKTX**

Project: **PARK/QUARRY/ROCKLIN**

Notes:

Type:

Qty	1	Bollard	[DOSB1-018]-VPA-COLTX
-----	---	---------	-----------------------

Description of Components:

Hood: Shall be made from cast aluminum 356, mechanically assembled.

Lens: Clear acrylic cylindrical lens, c/w a Partially Obscure Non Diffusing finish. Clear acrylic cylindrical lens, c/w a Partially Obscure Non Diffusing finish.

Housing: In a round shape, this housing is made of cast aluminum 356, c/w one louver, welded to the base. In a round shape, this housing is made of cast aluminum 356, c/w one louver, welded to the base.

Base: Made of aluminum, 5" (127mm) outside diameter, welded to the base cover. Complete with a maintenance door to access the removing mechanism.

Anchoring tenon: The system is composed of (A) a 1/2-13 UNC x 14" (356mm) bolt threaded for 6 1/2" (165mm), (B) a 3" (76mm) O.D. aluminum rod and (C) a 3" (76mm) O.D. steel rod. See detail drawing at the end of document.

Base Cover: Made of cast aluminum 356, mechanically secured to the anchor plate.

Bollard Options: (VPA), Vandalproof screw(s), pin-in socket tamper resistant head.

Submitting Agency:



Associated Lighting Reps, Inc

Description: **DOSB1-018-VPA-BKTX**

Project: **PARK/QUARRY/ROCKLIN**

Notes:

Type:

Miscellaneous

Description of Components:

Hardware: All exposed screws shall be complete with Ceramic primer-seal basecoat to reduce seizing of the parts and offers a high resistance to corrosion. All seals and sealing devices are made and/or lined with EPDM and/or silicone and/or rubber.

Finish: Textured color to be advised (Product Standard Color only): _____ **(COLTX)** and in accordance with the AAMA 2603 standard. Application of polyester powder coat paint (4 mils/100 microns) with ± 1 mils/24 microns of tolerance. The Thermosetting resins provides a discoloration resistant finish in accordance with the ASTM D2244 standard, as well as luster retention in keeping with the ASTM D523 standard and humidity proof in accordance with the ASTM D2247 standard.

The surface treatment achieves a minimum of 2000 hours for salt spray resistant finish in accordance with testing performed and per ASTM B117 standard.

Note: IMPORTANT: All missing details must be clearly specified on the return of these approval drawings. Thank you for your cooperation.

COLOR:_____

Quality Control: The manufacturer must provide a written confirmation of its ISO 9001-2008 and ISO 14001-2004 International Quality Standards Certification.

Web site information details: Click on any specific information details you need:

[Paint finish](#) / [Warranties](#) / [Installation pictures](#) / [ISO 9001-2008 Certification](#) / [ISO 14001-2004 Certification](#)



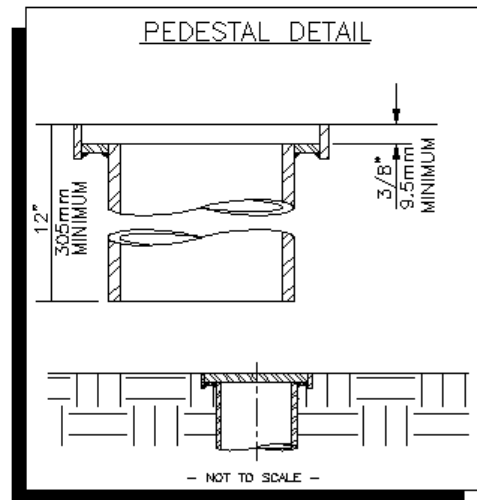
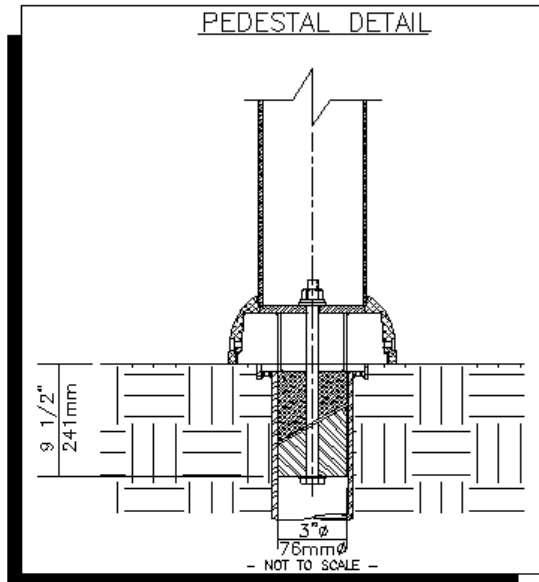
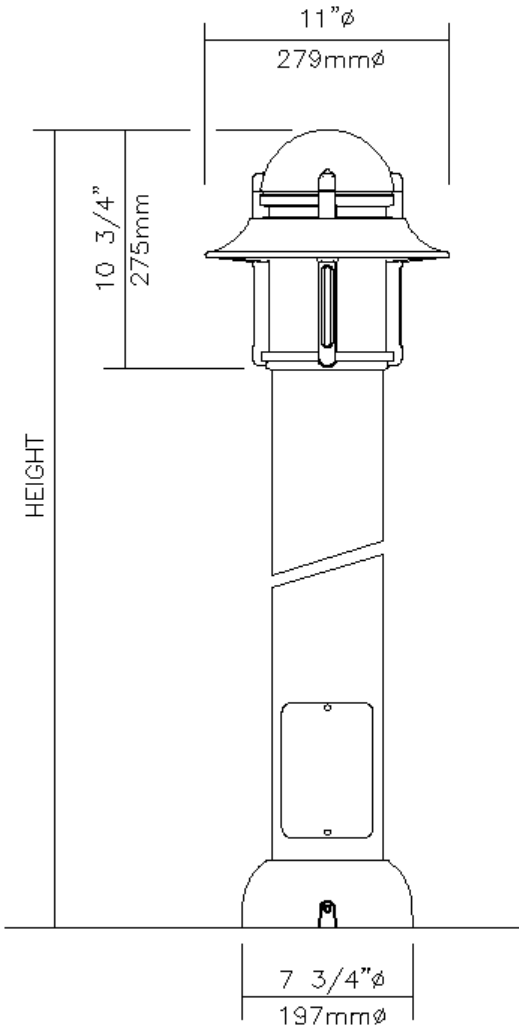
Submitting Agency:



Associated Lighting Reps, Inc

Description: **DOSB1-018-VPA-BKTX**
Project: **PARK/QUARRY/ROCKLIN**
Notes:

Type:



Submitting Agency:

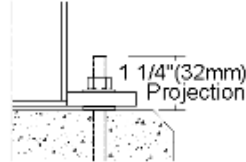


Associated Lighting Reps, Inc

Description: **DOSB1-30W16LED4K-120- 3/8X12-G-2**
1/2-SEC-BKTX
Project: **PARK/QUARRY/ROCKLIN**
Notes:

Type:

Base & Bolts Information



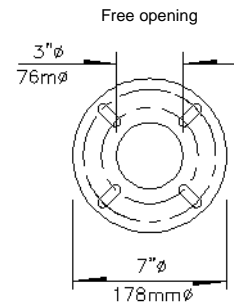
Comes with 4 steel anchor bolts, 3/8" X 9" + 3" J Type Bolts, Fully Galvanized, 4 nuts and 8 washers. Important: Do not obstruct space between anchor plate and concrete base.

Anchoring Detail

-Bolt Circle: 5 1/2"
140mm

- Material:
Cast Aluminum

- NOTE:
Bolts Circle Allowed:
4 3/8" @ 6"
111mm @ 152mm



Bollard DOSB1-30W16LED4K-120-BKTX

Description of Components:

Hood: Shall be made from cast aluminum 356, mechanically assembled.

Heat Sink: Made of cast aluminum optimising the LEDs efficiency and life. Product does not use any cooling device with moving parts (only passive cooling device)

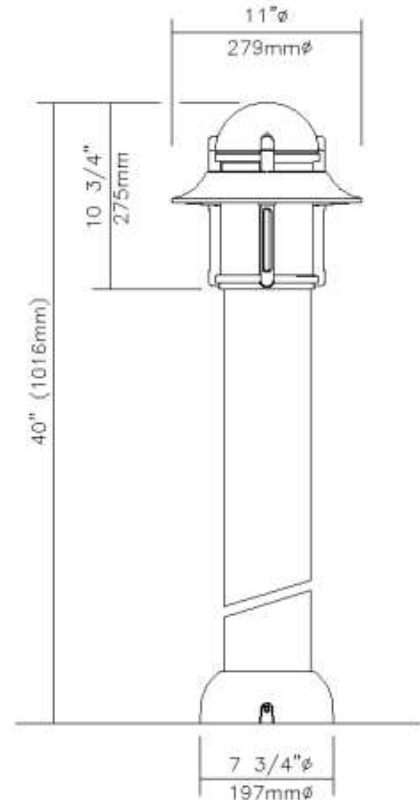
Lens: Clear acrylic cylindrical lens, c/w a Partially Obscure Non Diffusing finish. Clear acrylic cylindrical lens, c/w a Partially Obscure Non Diffusing finish.

Lamp: Included, Composed of 16 high-performance white LEDs, 30w lamp wattage. Color temperature of 4000 Kelvin nominal, 70 CRI. Operating lifespan, 70 000 hours after which the system emits 70% of its original lumen output, all of those parameters are tested for 100% of light engines. Use of a metal core board ensures greater heat transfer and longer lifespan of the light engine. **LED Module (Included)**, Composed of 16 high-performance white LEDs. Color temperature of 4000 Kelvin nominal, 70 CRI. Operating lifespan based on TM-21 extrapolation to get results after which 50% of LEDs still emits over 70% (L70) of its original lumen output. Use of metal core board ensures greater heat transfer and longer lifespan of the light engine. The LED circuit board is included with a quick disconnect wiring connection for ease of replacement.

Optical System: A spun 1100-0 aluminum reflector, white painted, assembled into the head.

Housing: In a round shape, this housing is made of cast aluminum 356, c/w one louver, welded to the base. In a round shape, this housing is made of cast aluminum 356, c/w one louver, welded to the base.

Driver: High power factor of minimum 90%. Electronic driver, operating range 50/60 Hz. **Auto-adjusting to a voltage between 120 and 277 volt AC rated for both application line to line or line to neutral, Class II, THD of 20% max.** Maximum ambient operating temperature from -40F(-40C) to 122F(50C) degrees. Certified in compliance to CUL requirement. Dry and damp location. Assembled on a unitized removable tray with Tyco quick disconnect plug resisting to 221F(105C) degrees.



Submitting Agency:



Associated Lighting Reps, Inc

Description:

DOSB1-30W16LED4K-120- 3/8X12-G-2

1/2-SEC-BKTX

Project:

PARK/QUARRY/ROCKLIN

Notes:

Type:

The current supplying the LEDs will be reduced by the driver if the internal driver temperature exceeds 176F(80C), as a protection to the LEDs and the electrical components. Output is protected from short circuits, voltage overload and current overload. Automatic recovery after correction.

Surge Protector: Surge protector tested in accordance with ANSI/IEEE C62.45 per ANSI/IEEE C62.41.2 Scenario I Category C High Exposure 10kV/10kA waveforms for Line-Ground, Line-Neutral and Neutral-Ground, and in accordance with U.S. DOE (Department of Energy) MSSLC (Municipal Solid-State Street Lighting Consortium) model specification for LED roadway luminaires electrical immunity requirements for High Test Level 10kV / 10kA.

Access-Mechanism: Four screws integrated on the housing offers access to the inside of the bollard.

Base: Made of aluminum, 5" (127mm) outside diameter, welded to the base cover.

Base Cover: Made of cast aluminum 356, mechanically secured to the anchor plate.

Bollard Options: (),

Submitting Agency:



Associated Lighting Reps, Inc

Description:

DOSB1-30W16LED4K-120- 3/8X12-G-2

Project:

1/2-SEC-BKTX

Notes:

PARK/QUARRY/ROCKLIN

Type:

Miscellaneous

Description of Components:

Hardware: All exposed screws shall be complete with Ceramic primer-seal basecoat to reduce seizing of the parts and offers a high resistance to corrosion. All seals and sealing devices are made and/or lined with EPDM and/or silicone and/or rubber.

Finish: Color to be **black textured RAL9005TX (BKTX)** and in accordance with the AAMA 2603 standard. Application of polyester powder coat paint (4 mils/100 microns) with ± 1 mils/24 microns of tolerance. The Thermosetting resins provides a discoloration resistant finish in accordance with the ASTM D2244 standard, as well as luster retention in keeping with the ASTM D523 standard and humidity proof in accordance with the ASTM D2247 standard.

The surface treatment achieves a minimum of 2000 hours for salt spray resistant finish in accordance with testing performed and per ASTM B117 standard.

LED products manufacturing standard: The electronic components sensitive to electrostatic discharge (ESD) such as light emitting diodes (LEDs) are assembled in compliance with IEC61340-5-1 and ANSI/ESD S20.20 standards so as to eliminate ESD events that could decrease the useful life of the product.

Quality Control: The manufacturer must provide a written confirmation of its ISO 9001-2008 and ISO 14001-2004 International Quality Standards Certification.

Web site information details: Click on any specific information details you need:

[Paint finish](#) / [Warranties](#) / [Installation pictures](#) / [ISO 9001-2008 Certification](#) / [ISO 14001-2004 Certification](#) / [Driver Specification](#)



GALLERY 1970LED

The 1970LED Gallery series is large scale, decorative downlight fixture with a spun aluminum shade. The dome is available with two types of shades: straight (S) and flared (F) styles. The luminaire shall measure 24" outside diameter and 16 3/8" overall height. The luminaire shall have a hinged door for tool-less driver and LED access. The luminaire shall be supplied with the line-ground, line neutral and neutral-ground electrical surge protection in accordance with IEEE/ANSE C62.41.2 guidelines. The luminaire shall be U.L. or E.T.L. listed in U.S. and Canada.



PROJECT: PARK/QUARRY/ROCKLIN

TYPE:

ORDERING EXAMPLE: 1A-1970LED-FGW-EZ-FG-6ARC35T2-F-MDH03-R-HSS-FHD/UBKT



1A	1970LED-S-BF			FG	4ARC	35	T5	F	MDH03						BK
MOUNT CON-FIG.	SERIES Large Scale Downlight	GLOW RINGS ⁴	MOUNT OPTIONS	LENS	NO. OF LEDS	COLOR TEMP K	DISTR. TYPE	DISTR. ORIENT.	DRIVER	CONTROLS	HOUSE SIDE SHIELD	DUAL FUSE & HOLDER	OPTIONAL FINAL ^{1,2}	COLOR	
1W	1970LED-S BF	1970LED-S GW ³	BLUE	EZ	FG	10ARC	27(00) K	T2	F	MDL03	O P T I O N S				UBKT BK
1A	1970LED-F BF	1970LED-F GW ³	GREEN	HS-H	SG	8ARC	35(00) K	T3	R	MDH03	R ¹	HSS	FHD	B	UBT WH
2A	1970LED-S BT	1970LED-S HW ³	RED	HS-C	FSG	6ARC	45(00) K	T3R	L		R1 ¹		S	ULBT PG	
2A90	1970LED-F BT	1970LED-F HW ³	CLEAR	SH-44	SV1*	4ARC		T4	S		PEC			USLT ABZ	
3A	1970LED-S CW ³	1970LED-S BTRS		CH-44	SV2**			T5			PTM			UWHT DB	
3A90	1970LED-F CW ³	1970LED-F BTRS												UCHS OI	
4A	1970LED-S GR ³	1970LED-S GTSR ³												UBK RT	
	1970LED-F GR ³	1970LED-F GTSR ³												UB WBR	
														ULB CD	
														USL WBK	
														UWH TT	
														BKT VG	
														WHT SI	
														PGT OWGT	
														ABZT	
														DBT	

¹ Only available with HS-H and HS-C mounting. ² Not available with Twist-lock photocell. ³ Illuminated LED glow option. ⁴ Only available with 1970LED-S GR and 1970LED-F GR.

Product Specs

Optical

- IP65 rated. BUG rating of U-0.
- Utilizes high output, high brightness LEDs.
- Operates at -40°C (-40°F) to +50°C (122°F) ambient air temperature range.
- Minimum CRI of 70, CCT 2700, 3500, and 4500K. Call factory for other CCT.
- LM-79 and LM-80 tests in accordance with IESNA standards.
- Lumen depreciation rating L70 > 200,000 hrs. Projected per TM-21 guideline and based on 350mA drive current.
- RoHS Compliant.

Electrical

- 120-277 volt standard and 347-480 volt option available.
- Minimum drivers power factor: >0.9.
- Electrical surge protection in accordance with IEEE/ANSI C62.41.2 guidelines (10kV).
- UL or ETL listed in U.S. and Canada.

Colors

Urbanline Finishes

- UBKT - Urban Black Textured
- UBT - Urban Bronze Textured
- ULBT - Urban Light Bronze Textured
- USLT - Urban Silver Textured
- UWHT - Urban White Textured

Standard Finishes

- UCHS - Urban Champagne Satin Smooth
- UBK - Urban Black Matte
- UB - Urban Bronze Matte
- ULB - Urban Light Bronze Matte
- USL - Urban Silver Matte
- UWH - Urban White Matte
- BKT - Black Textured
- BK - Black
- WHT - White Textured
- WH - White
- PGT - Park Green Textured
- PG - Park Green
- ABZT - Architectural Medium Bronze Textured

Custom Finishes

- ABZ - Architectural Medium Bronze
- DBT - Dark Bronze Textured
- DB - Dark Bronze
- OI - Old Iron
- RT - Rust
- WBR - Weathered Brown

- CD - Cedar
- WBK - Weathered Black
- TT - Two Tone
- Stenberg Select Finishes
- VG - Verde Green
- SI - Swedish Iron
- OWGT - Old World Gray Textured

Distribution Orientation



Submitting Agency:



Associated Lighting Reps, Inc

Description: **1A-1970LED-S-BF-HG-FG-4ARC35T5-F-MDH03/PH1/12/PV/R/46/BK**
 Project: **PARK/QUARRY/ROCKLIN**
 Notes:

Type:

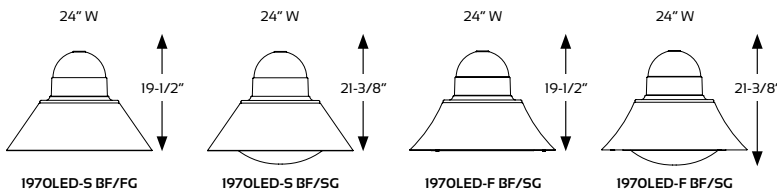
Product Dimensions and Features

All models available with Straight (S) or Flared (F) shades

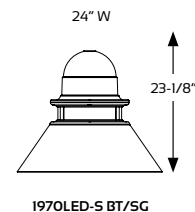
EPA: 0.93 SQUARE FT
 WEIGHT: 38 LBS



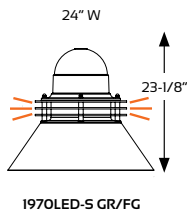
1970LED GALLERY BF BASE FIXTURE



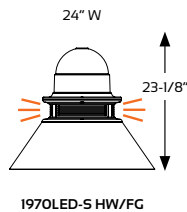
1970LED GALLERY BT BLANK TOP



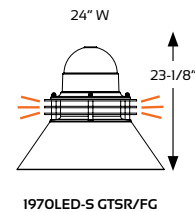
1970LED GALLERY GR GLOW RINGS



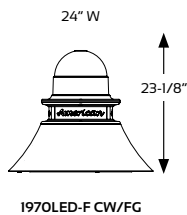
1970LED GALLERY HW HORIZONTAL WINDOW



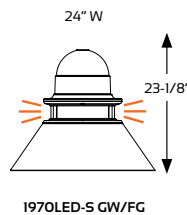
1970LED GALLERY GLOW TOP SOLID RINGS



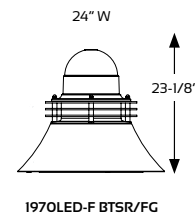
1970LED GALLERY CW CUSTOM WINDOW DESIGNS



1970LED GALLERY GW GLOW WINDOW



1970LED GALLERY BTSR BLANK TOP SOLID RINGS



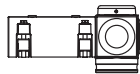
Mounting Options



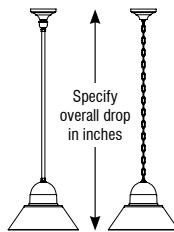
EZ
 EZ Hang
 Vertical
 2-3/4"W x
 4"H



HS-H
 Horizontal
 8-1/4"W x
 7-5/8"H



HS-C
 Clamp
 12-1/2"W x
 7-5/8"H



SH44 Stem Hung
CH44 Chain Hung



B
 Ball Finial
 3"W x 4-3/8"H



S
 Spiked Finial
 2-1/2"W x 6-3/8"H

* Only available with HS-H, HS-C, and SM mounting

Mounting Configurations



1W



1A



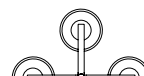
2A



2A90



3A



3A90



4A

Submitting Agency:



Associated Lighting Reps, Inc

Description: **1A-1970LED-S-BF-HG-FG-4ARC35T5-F-MDH03/PH1/12/PV/R/46/BK**
 Project: **PARK/QUARRY/ROCKLIN**
 Notes:

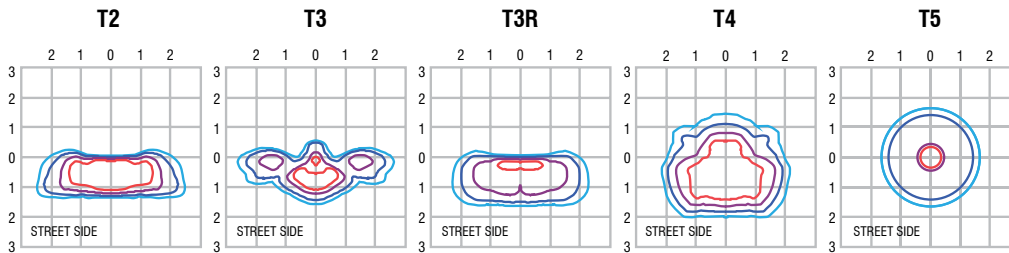
Type:

Performance (Based on FG Lens)



MODEL #	T2 DELIVERED LUMENS	EFFICACY (LPW)	T3 DELIVERED LUMENS	EFFICACY (LPW)	T3R DELIVERED LUMENS	EFFICACY (LPW)	T4 DELIVERED LUMENS	EFFICACY (LPW)	T5 DELIVERED LUMENS	EFFICACY (LPW)	WATT-AGE
4ARC27	4905	74.3	4575	69.3	4940	74.8	4810	72.9	4740	71.8	66
4ARC35	5595	84.8	5220	79.1	5630	85.3	5480	83.0	5405	81.9	66
4ARC45	5965	90.4	5560	84.2	6000	90.9	5840	88.5	5760	87.3	66
6ARC27	7105	73.2	6760	69.7	6895	71.1	6770	69.8	6725	69.3	97
6ARC35	8105	83.6	7705	79.4	7865	81.1	7720	79.6	7670	79.1	97
6ARC45	8635	89.0	8215	84.7	8380	86.4	8230	84.8	8170	84.2	97
8ARC27	9465	74.5	9085	71.5	9230	72.7	9055	71.3	8870	69.8	127
8ARC35	10790	85.0	10360	81.6	10525	82.9	10325	81.3	10115	79.6	127
8ARC45	11500	90.6	11040	86.9	11215	88.3	11000	86.6	10780	84.9	127
10ARC27	11530	72.1	11105	69.4	11330	70.8	11080	69.3	10965	68.5	160
10ARC35	13145	82.2	12665	79.2	12920	80.8	12635	79.0	12505	78.2	160
10ARC45	14010	87.6	13495	84.3	13770	86.1	13465	84.2	13325	83.3	160

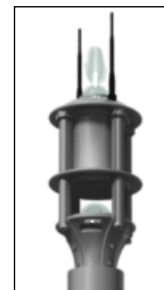
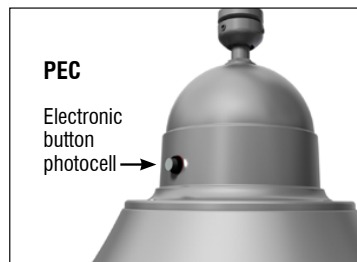
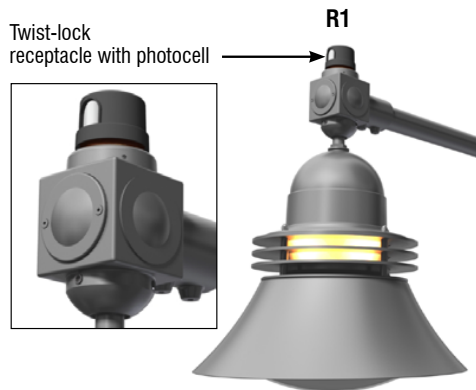
ISO Footcandle Plots



All published luminaire photometric testing performed to IESNA LM-79 standards by NVLAP, certified laboratory. ISO footcandle plots demonstrate the GALLERY 1970LED light patterns only. Not for total fixture output. For complete specifications and IES files, see website.

Other Options

IntelliStreets



PTM
Post Top Module



800-621-3376
 555 Lawrence Ave., Roselle, IL 60172
 info@sternberglighting.com
 www.sternberglighting.com

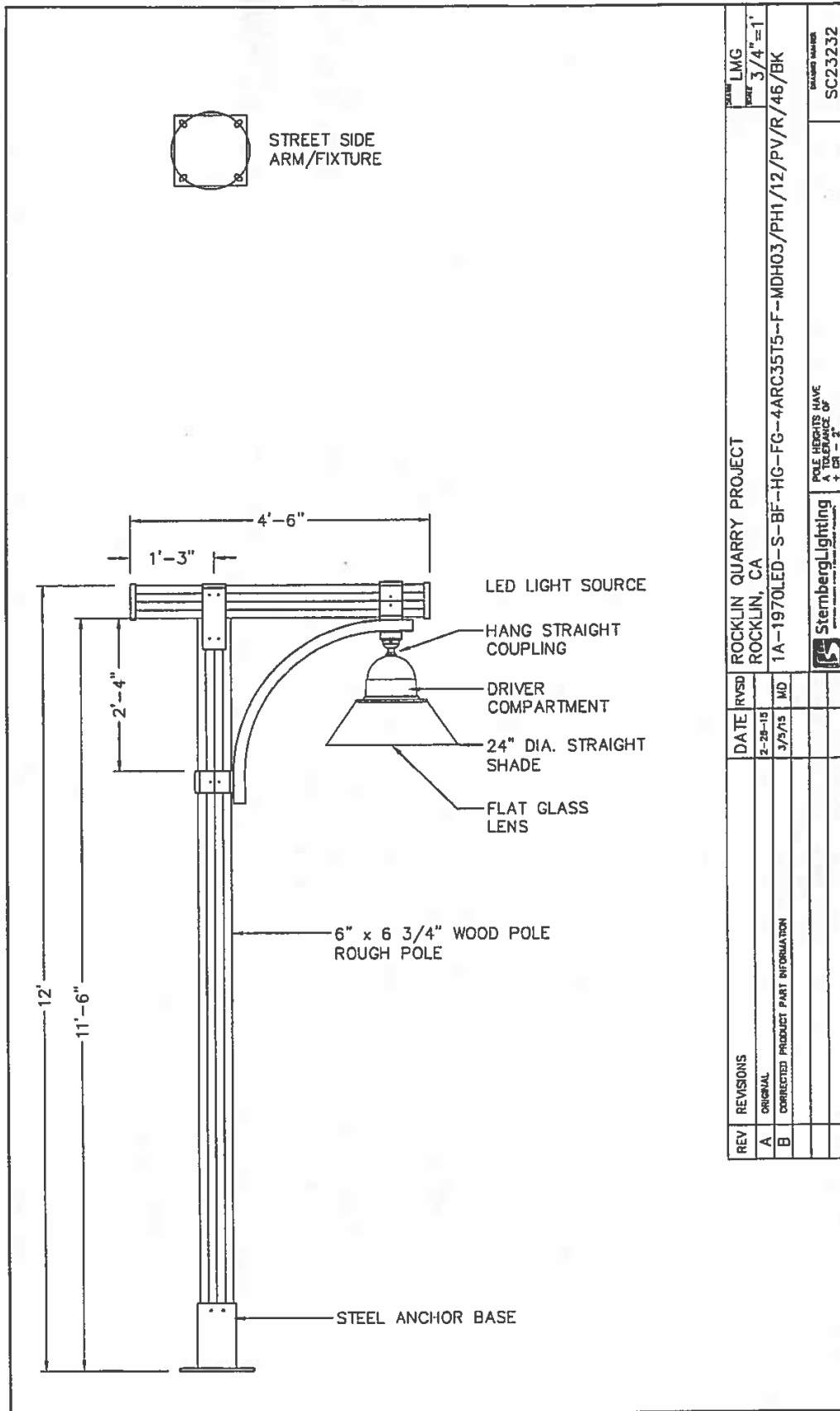
Submitting Agency:



Associated Lighting Reps, Inc

Description: **1A-1970LED-S-BF-HG-FG-4ARC35T5-F-MDH03/PH1/12/PV/R/46/BK**
 Project: **PARK/QUARRY/ROCKLIN**
 Notes:

Type:



REV	REVISIONS	DATE	RVSD	PROJECT	DATE	LMG
A	ORIGINAL	2-28-13		ROCKLIN QUARRY PROJECT ROCKLIN, CA		3/4"=1'
B	CORRECTED PRODUCT PART INFORMATION	3/5/13	MD	1A-1970LED-S-BF-HG-FG-4ARC35T5-F-MDH03/PH1/12/PV/R/46/BK		
						DESIGN NUMBER SC23232
						POLE HEIGHTS HAVE A TOLERANCE OF ± 0.2"





Description:	1A-1970LED-S-BF-HG-FG-4ARC35T5-F-MDH03/PH1/12/PV/R/46/BK	Type:
Project:	PARK/QUARRY/ROCKLIN	
Notes:		



SPECIFICATION

6-3/4" x 6" P AND PV PRONGHORN STRAIGHT POLE WITH ONE WAY CROSS ARM

BUILDING A PART NUMBER

MODEL	HEIGHT	TYPE	TEXTURE	ONE WAY CROSS ARM	FINISH*
PH1	15	PV	R	46	BKT**
PH1 – 6-3/4" x 6"	12 15 20	P – DIRECT BURIAL PV – ANCHOR BOLT	R – ROUGH S – SMOOTH	4'6" 6'	STANDARD FINISHES¹ <ul style="list-style-type: none"> • BKT Black Textured • WHT White Textured • PGT Park Green Textured • ABZT Architectural Medium Bronze Textured • DBT Dark Bronze Textured

Specifications – For TimberWood Architectural Laminated Wood Light Poles

- 1.0 General:** TimberWood Architectural Laminated Wood Light Poles shall be of materials, size, shapes, styles, patterns and fabrication as specified herein and as shown on JH Baxter detail drawings.
- 2.0 Lumber:** Coast region Douglas Fir only for direct bury, (Port Orford Cedar or Alaskan Yellow Cedar for above ground use only). L1 laminating grade for strength and appearance is used on all exposed wide faces. L2 or L2 dense is used for interior laminations. Grades are described in current WCLIB Grading Rules.
- 3.0 Laminating Requirements:** Architectural Laminated Wood Light Poles shall be laminated with adhesives meeting or exceeding the exterior durability performance requirements of the most recent revision of American National Standard ANSI / AITC A190.1-2007.
- 4.0 Surface Finish, Appearance & Tolerance:** Open defects such as knotholes exceeding 1/2" in diameter or wane exceeding 1/4" x 12" shall be filled with wood filler for surfaced four faces with edges eased to 3/8" radius. For rough, textured four sides, knots will be exposed. Tolerances shall be from +0 to -1/4" in width and depth.
- 5.0 Preservative Treatment:** Architectural Laminated Wood Light Poles will be treated with 6% pentachlorophenol borne in light hydrocarbon solvent in conformance with AWPA Standards to a minimum net retention of 0.60 pounds per cubic foot of penta.
- 6.0 Trademark:** Each Architectural Laminated Wood Light Poles shall be branded to indicate Manufacture-Month-Year at 18" above intended ground line.
- 7.0 Wrapping:** Architectural Laminated Wood Light Poles will be individually wrapped.
- 8.0 Embedment:** As required by local codes and soil conditions. Designed by others. Refer to form no. SL-1281 for recommendations.
- 9.0 Top Protection:** Metal cap must be installed unless fixture is top mounted.
- 10.0 Incising:** All Architectural Laminated Wood Light Poles will be incised on all four sides to 1/2" in depth from butt to 16" above indicated ground mark (P poles) or 12" from butt if mounted in steel base (PV). Incising adds durability to treated Douglas Fir.

- ¹Smooth finishes are available upon request
- CUSTOM FINISHES**
- **OI** Old Iron
 - **RT** Rust
 - **WBR** Weathered Brown
 - **CD** Cedar
 - **WBK** Weathered Black
 - **TT** Two Tone
- STERNBERG SELECT FINISHES**
- **VG** Verde Green
 - **SI** Swedish Iron
 - **OWGT** Old World Gray Textured
- *BK=BLACK

^{*}Base and metal parts (non-fixture)
^{**}Default color if none is chosen

