

Placer County Air Quality Supplemental Questionnaire For City of Rocklin

Environmental Health
 3091 County Center Drive, Suite 180
 Auburn, CA 95603
 (530) 745-2300
 Fax (530) 745-2370
 www.placer.ca.gov/Departments/hhs/env_health

Air Pollution Control District
 110 Maple Street
 Auburn, CA 95603
 (530) 745-2330
 Fax (530) 745-2373
 www.placer.ca.gov/apcd

State law requires that an applicant for a non-residential building permit or Certificate of Occupancy provide information indicating whether a permit is required from the Air Pollution Control District. The law further prohibits a City or County from issuing a Certificate of Occupancy, unless a business has complied with provisions of the laws that are administered by the Air Pollution Control District and Placer County Environmental Health. To determine whether your business is subject to these requirements, please complete this questionnaire.

1. Facility Information

Applicant Name	Email
Mailing Address	
Project / Business / Facility Address	
Telephone	Fax
Building Permit Number	APN

2. Type of Permit

Check Appropriate Boxes

- Commercial Building
 Tenant Improvement

3. Type of Business

Check Appropriate Boxes

- Manufacturing
 Retail/Sales
 Other (Describe): _____

Name of Business / Facility / Project

4. Does the business/facility/operation have the potential to emit any air pollutant, or is it a new or modified source of hazardous air emissions? Examples include; dust, soot, odors, fumes, vapors (including those from volatile organic compounds), or pollutants from combustion processes? YES NO

If YES, an Authority to Construct or Permit to Operate from the Placer County Air Pollution Control District may be required. The District will contact you for more information. To determine if a permit will be required you may complete the Permitting Requirements/Do You Need a Permit? Questionnaire available on the District web site, www.placer.ca.gov/apcd, if you answer yes to any question you should also answer yes to Question #4. You may contact the District at (530) 745-2330 for more information.

5. If number 4 is YES, is the project area within 1000 feet of a school¹ or a school site? YES NO
 If YES, please list schools within 1000 feet. _____

6. Does/Will the occupant/occupant's business handle, store, transport, or generate hazardous materials and/or hazardous waste? YES NO

Hazardous materials are defined as any material that, because of its quantity, concentration, or physical or chemical properties, poses a significant present or potential hazard to human health and safety or to the environment. "Hazardous Materials" include, but are not limited to, hazardous chemicals, hazardous wastes, paints, oils, lubricants, fuels and any material for which a handler or the administering agency has a reasonable basis for believing to be injurious to the health and safety of persons or harmful to the environment if released. If a business falls within ANY of the following Threshold Quantities at any one time during the reporting year, submittal of a Hazardous Materials Business Plan (HMBP) is required:

- Solids - 500 lbs. or more
- Liquids - 55 gallons or more
- Compressed Gasses - 200 Cubic Feet or more
- Acutely Hazardous - The threshold quantity of any extremely hazardous substance, or radiological materials in a quantity requiring federal emergency plan.

Additionally, If the business generates hazardous waste and/or has an active California Identification (ID) Number (Federal Environmental Protection Agency ID Number), the business is required to obtain a Hazardous Waste Generator Permit from PCEH.

APPLICANT SIGNATURE

I declare under penalty of perjury, to the best of my knowledge and beliefs, the responses made herein are true and correct.

Applicant Signature

Date

FOR BUILDING SERVICES USE ONLY (Forward to PCAPCD for any "YES" finding)

YES NO

Hazardous Air Emissions and Hazardous Materials: Has the Applicant answered "YES" to one or more of Questions 4, 5, or 6?

If the response is "YES" to the question above, please forward this form to the Placer County Air Pollution Control District

Building Services Signature

Date

FOR PLACER COUNTY ENVIRONMENTAL HEALTH (PCEH) USE ONLY – WHEN QUESTION #6 IS "YES" (Return to PCAPCD)

YES NO

Hazardous Materials Storage, Handling, Transport: The Applicant has met or is meeting the applicable requirements of California Government Code 65850.2^{2,3}, and California Health and Safety Code, Div. 20, Chapter 6.95, starting at Section 25500, and the requirements for a PCEH permit, or, these requirements do not apply to this application, and therefore a Certificate of Occupancy may be approved.

PCEH Signature

Date

FOR PLACER COUNTY AIR POLLUTION CONTROL DISTRICT (PCAPCD) USE ONLY

YES NO

Air District Permit Requirements: The application has met or is in compliance with California Government Codes 65850.2(b)² by providing the required disclosures pursuant to California Health and Safety Code, Division 26, Part 4, Chapter 4, Section 42303, and 65850.2(c)³ by fulfilling the requirement for a permit from the Placer County Air Pollution Control District; or these requirements do not apply to this application, and therefore a Certificate of Occupancy may be approved.

PCAPCD Signature

Date

1 Health & Safety Code Section § 42301.9(a) - "School" means any public or private school used for purposes of the education of more than 12 children in kindergarten or any of grades 1 to 12, inclusive, but does not include any private school in which education is primarily conducted in private homes.

2 California Government Code § 65850.2.(b) - A city or county shall not find the application complete pursuant to Section 65943 or approve a development project or a building permit for a project that does not require a development permit other than a building permit, in which a regulated substance will be present in a process in quantities greater than the applicable threshold quantity, unless the owner or authorized agent for the project first obtains, from the administering agency with jurisdiction over the facility, a notice of requirement to comply with, or determination of exemption from, the requirement to prepare and submit an RMP. ... The owner or authorized agent shall submit, to the city or county, certification from the air pollution control officer that the owner or authorized agent has provided the disclosures required pursuant to Section 42303 of the Health and Safety Code.

3 California Government Code § 65850.2.(c) - A city or county shall not issue a final certificate of occupancy or its substantial equivalent unless there is verification from the administering agency, if required by law, that the owner or authorized agent has met, or is meeting, the applicable requirements of Section 25505 and Article 2 (commencing with Section 25531) of Chapter 6.95 of Division 20 of the Health and Safety Code, and the requirements for a permit, if required by law, from the air pollution control district or air quality management district exercising jurisdiction in the area governed by the city or county or has provided proof from the appropriate district that the permit requirements do not apply to the owner or authorized agent.

PLACER COUNTY AIR POLLUTION CONTROL DISTRICT

110 Maple Street, Auburn, CA 95603 ♦ (530) 745-2330 ♦ Fax: (530) 745-2373

PERMITTING REQUIREMENTS/DO YOU NEED A PERMIT? QUESTIONNAIRE

The Placer County Air Pollution Control District (District) is responsible for protecting air quality and issuing permits to ensure that owners/operators of emitting equipment and processes are complying with federal, state and District laws and regulations. State and federal laws require permits for any operation or equipment that has potential to pollute the air. The District's permitting program provides a procedure for the review of new sources of air pollution, and the modification and operation of existing sources, through engineering evaluations and the issuance of permits. For any equipment or process that emits or controls the emission of air contaminants to the atmosphere, permits shall be obtained prior to beginning construction, and prior to a modification, replacement, or relocation of such equipment. (California Health and Safety Code, Ch. 4, Art. 1, 42300)

By completing this questionnaire you can determine if a District permit may be required. District Rules and Regulations apply to large and small businesses and public agencies whose operations emit air pollutants.

Do I Need a Permit from the Air District?

If you answer "YES" to any of the questions numbered 1 through 25, you are urged to contact the District according to the section Who to Contact on the next page.

1. Do you operate/own air pollution control equipment? For example: scrubbers, cyclones, fabric filters, carbon adsorption systems and thermal oxidizers? (Rule 501) YES NO
2. Do you conduct painting or coating operations using one gallon or more per day of combined volume of paints, adhesives, inks, solvents or other solvent-containing materials? Note: recordkeeping is required to validate any use exemption. (Rule 501, Section 119.2 and Rule 240) YES NO
3. Will your processes/equipment have the capacity to emit more than two pounds per day of any pollutant? (Rule 501, Section 123) YES NO
4. Will operations include the coating of plastic parts and/or products? (Rule 501, Section 117) YES NO
5. Will operations include the storage of organic liquids? For example: gasoline, organic cleaning solvents, organic liquid raw materials? (Rule 212) YES NO
6. Is this a Gasoline station or is gasoline dispensed (retail or non-retail)? (Rules 213, 214, and 215) YES NO
7. Will operations include use of solvents in cleaning and/or degreasers? (Rule 216) YES NO
8. Will operations include the use or manufacture of Cutback or Emulsified asphalts? (Rule 217) YES NO
9. Will operations include supplying, selling, manufacturing, or using architectural coatings? Architectural coatings are coatings applied to stationary structures or portable buildings and their appurtenances at the site of installation, or to pavements or curbs. (Rule 218) YES NO
10. Will operations involve the reduction of animal matter, including human or animal crematories, incineration or incineration burning, rendering, cooking, drying, digesting, evaporating or protein concentration? (Rules 206 and 222) YES NO
11. Is this a dry cleaning operation that uses a hydrocarbon-containing or petroleum-based cleaning agent? (Rule 227) YES NO
12. Is this a Medium Density Fiberboard (MDF) operation? (Rule 229) YES NO
13. Will operations include paper coating/treating or graphic arts operations (print shops)? (Rules 230 and 239) YES NO
14. Will there be fossil fuel combustion equipment such as boilers or heaters with greater than or equal to one-million BTU/Hour (MMBH), or stationary internal combustion engines (engines greater than 50 hp)? The ratings of all engines or boiler used in the same process will be combined. (Rules 501, 209, 231 and 242) YES NO
15. Will operations include the burning of wood or biomass to produce steam, heat water or other fluids, and/or produce electricity? (Rules 232 and 233) YES NO
16. Will operations include auto body refinishing? (Rule 234) YES NO

17. Will operations include the use of adhesives or sealants? (Rule 235) YES NO
18. Will operations include the manufacturing and/or coating of wood furniture, cabinets or paneling? (Rules 236 and 238) YES NO
19. Is this a solid waste landfill disposal operation? (Rule 237) YES NO
20. Will polyester resin (e.g. fiber-glassing) operations be included? (Rule 243) YES NO
21. Will operations include semiconductor manufacturing operations? (Rule 244) YES NO
22. Will operations include the coating of metal parts and/or products, or include surface preparation solvents, cleanup solvent, or strippers? (Rules 240 and 245) YES NO
23. Will operations include contaminated soil/water treatment or remediation? YES NO
24. Will operations include stationary gas turbines? (Rule 250) YES NO
25. Will operations include processes that contain or involve the handling of asbestos, beryllium, benzene, hexavalent chromium, mercury, vinyl chloride, or other toxic air contaminant? (Regulation 9, Toxic Air Contaminants) YES NO

If you answer "YES" to any of the questions numbered 1 through 25, you are urged to contact the District according to the contact list below. Once you contact the District a determination will be made regarding the applicability of laws and regulations, exemptions, and whether a permit is required. If you are subject to permit requirements you must submit an application for a District permit, which includes an evaluation of compliance and the terms of operation under which continuing compliance can be achieved. District permits are renewable annually.

Exemptions from permitting, or specific District rules, or rule sections, exist for specified situations and/or equipment. An applicant claiming an exemption from the requirement to obtain a permit must have and maintain records to substantiate the qualification for the exemption. Please note that unless exempted entirely from rule requirements, the provisions of some rules may apply to an operation *even though a permit is not required*.

Who to Contact

Zach Lee, Fees/General Permitting Information (530) 745-2335
 John Finnell, Detailed Permitting Information, including Gas Stations (530) 745-2324

Information to Have Readily Available

When inquiring about permit applicability, have the following information readily available; full name and contact information of owner/operator, project/business location, type and description of business, projected listing of equipment that will be used in normal operations, projected listings and amounts of materials and chemicals to be used including liquids, solids and gases.

This fact sheet is not intended to cover burn permits or dust control. For information regarding burn permits please contact Ann Hobbs at (530) 745-2327. For Naturally-Occurring Asbestos Dust Mitigation Plan and Dust Control Plan approvals please contact Bruce Springsteen at (530) 745-2337. This information is also available on the District web pages listed below.

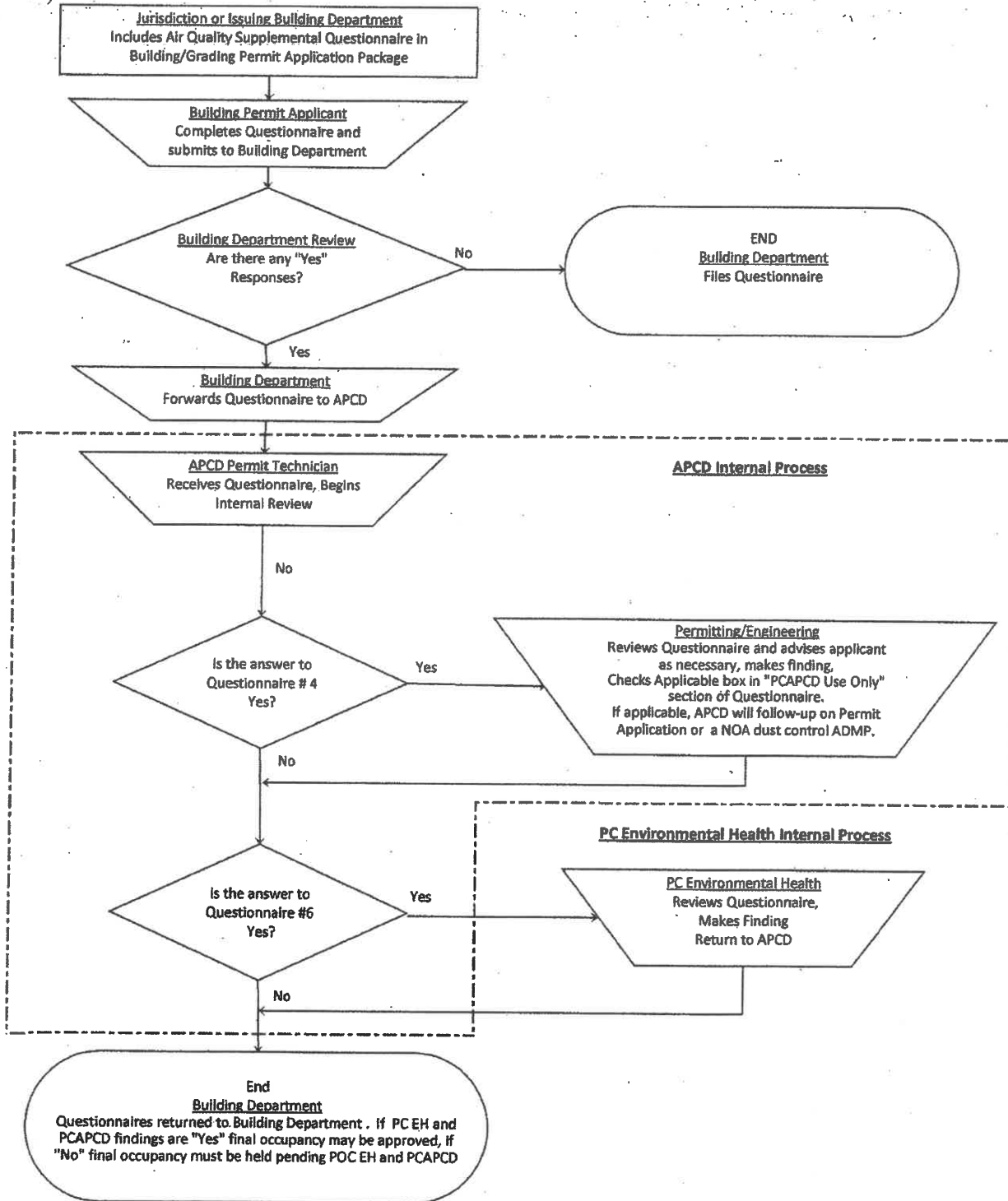
Additional Permit Information Resources

- Placer County Air Pollution Control District – <http://www.placer.ca.gov/>, APCD Main line - (530) 745-2330
- District Permit web page - <http://www.placer.ca.gov/Departments/Air/Permitting.aspx>
- District Dust Control requirements – [Construction and Grading Dust Control Requirements](#)
- Stationary Source Permit Checklist – <http://www.placer.ca.gov/Departments/Air/~media/apc/documents/FormsETC/AppCheckList%20pdf.ashx>
- Stationary Source Permit Instructions – <http://www.placer.ca.gov/Departments/Air/~media/apc/documents/FormsETC/AppInstructions%20pdf.ashx>
- Stationary Source Permit Application – <http://www.placer.ca.gov/Departments/Air/~media/apc/documents/FormsETC/Application%20pdf.ashx>
- Application Filing Fees Checklist – <http://www.placer.ca.gov/Departments/Air/~media/apc/documents/Board%20and%20Budget/Fees/FilingFeeChecklist.aspx>

For information regarding the remodel or demolition of a building or structure that may contain asbestos,

- <http://www.epa.gov/asbestos/pubs/asbreg.html> the EPA Asbestos Laws and Regulations web page;
- [40 CFR Part 763 - Asbestos \(pdf\)](#) Code of Federal Regulations including Subpart E - Asbestos-Containing Materials in Schools, Subpart G - Asbestos Worker Protection, Subpart I - Prohibition of the Manufacture, Importation, Processing and Distribution in Commerce of Certain Asbestos-Containing Products, and Labeling Requirements
- [40 CFR Part 61, Subpart M - National Emission Standards for Asbestos](#) the National Emission Standards for Hazardous Air Pollutants (NESHAPS)

Placer County Air Quality Supplemental Questionnaire Process Flowchart



PLACER COUNTY AIR POLLUTION CONTROL DISTRICT

110 Maple Street, Auburn, CA 95603 ♦ (530) 745-2330 ♦ Fax: (530) 745-2373
www.placer.ca.gov/apcd

**AIR QUALITY SUPPLEMENTAL QUESTIONNAIRE
QUESTION #4 FACT SHEET**

The Placer County Air Pollution Control District (PCAPCD) permitting program requires the review of new sources of air pollution, and the modification of existing sources, through engineering evaluations and the issuance of permits.

City and Counties are prohibited by California Government Code 65850.2 from issuing a final permit for occupancy unless the applicant has met or is meeting the requirements to obtain a permit from the local air pollution control district. In the Air Quality Supplemental Questionnaire Question #4 asks *“Does the business/facility/operation have the potential to emit any air pollutant, or is it a new or modified source of hazardous air emissions?”* This question seeks to determine whether a PCAPCD permit for air pollution is required.

Typical equipment that requires a PCAPCD permit includes the following examples, and Question #4 should be answered with a “YES”:

- Asphalt plants
- Auto-body Repair/Refinishing shops
- Boilers rated greater than or equal to 1 Million Btu per hour
- Coating/Painting operations in shops
- Coffee Roasters
- Concrete Plants
- Crematories
- Dry Cleaners
- Emergency Generators with engines greater than 50 horsepower
- Engines, others >50hp, excluding vehicles
- Gas Stations, including small above ground tanks
- Graphic arts or printers that use inks
- Groundwater Remediation Equipment
- Heaters (excluding building heating/cooling)
- Incinerators
- Kilns (gas fired)
- Landfill gas flares and engines
- Polyester Resin Manufacturing
- Power plants
- Rock crushers
- Wood coaters

Operations that generally do not require an air permit include the following examples and Question #4 can be answered with a “NO”:

- Automobile repair shops (not painting)
- Dental offices, with/without medical gas
- Doctors’ or medical offices
- General business offices
- Hair salons
- Nail salons
- Retail Stores
- Restaurants
- Sales offices
- Veterinary clinics

The Air Quality Supplemental Questionnaire’s Question #4 is intended to assist both the applicant and the PCAPCD in identifying equipment and processes that need an air permit. The “Permitting Requirements/Do you need a Permit?” Questionnaire, available on the PCAPCD webpage, www.placer.ca.gov/apcd, is another tool to help determine if permits are needed.

Applicants are also welcome to contact PCAPCD at (530) 745-2324 for with questions or for assistance.