

STATION DESCRIPTION & SKETCH

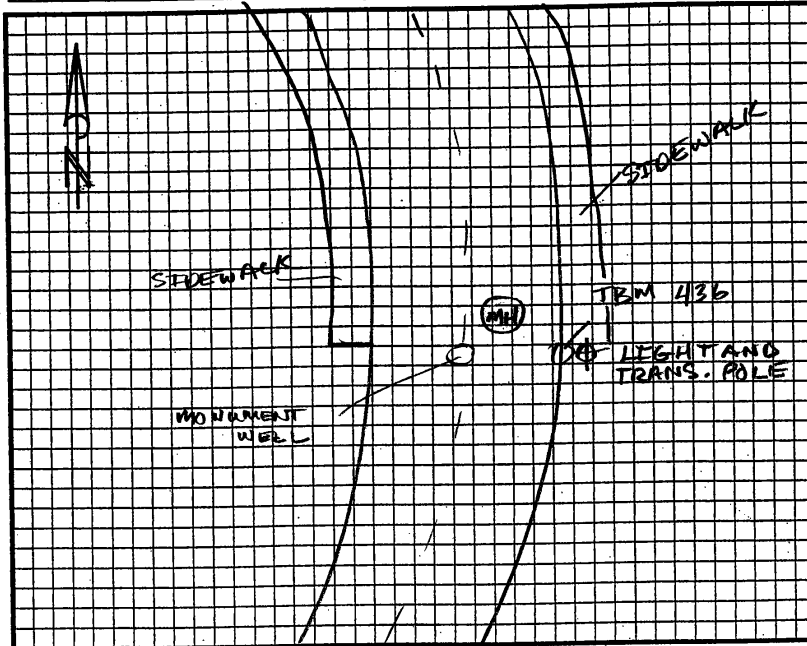
JN 11559-00 - Project Name: CITY OF ROCKLIN CONTROL NETWORK

QUADRANGLE NAME: Roseville STATION NAME: TBM 436 (R9-2)

Approximate Latitude: 38° 46' 52.29" N Approximate Longitude: 121° 15' 16.61" W

Described by: PETER BALDO Date: 4/3/03

To reach the point FROM INTX OF SUNSET BLVD AND PACIFIC ST. HEAD WEST ON SUNSET TO INTX SUNSET BLVD AND S. WHITNEY BLVD. GO LEFT (SOUTH) ON S. WHITNEY BLVD TO RAINIER AVE. FOLLOW RAINIER PAST INTX LASSEN WAY TO PT. ON LT. PK. NAIL IN TOP OF CURB @ SIDEWALK END.



The point is marked by PK-NAIL w/ANDREGG and is FLUSH w/ the ground. WASHER

PT IS 20' EAST OF FACE OF CURB AND 3' NORTH OF END SIDEWALK. THE PT IS (FOR-) 15' EAST OF SMUD. MAN HOLE AND (FOR-) 21' EAST OF MONUMENT WELL @ CENTERLINE. PT IS ALSO NORTHWEST OF LIGHT AND TRANSFORMER POLE #137.