

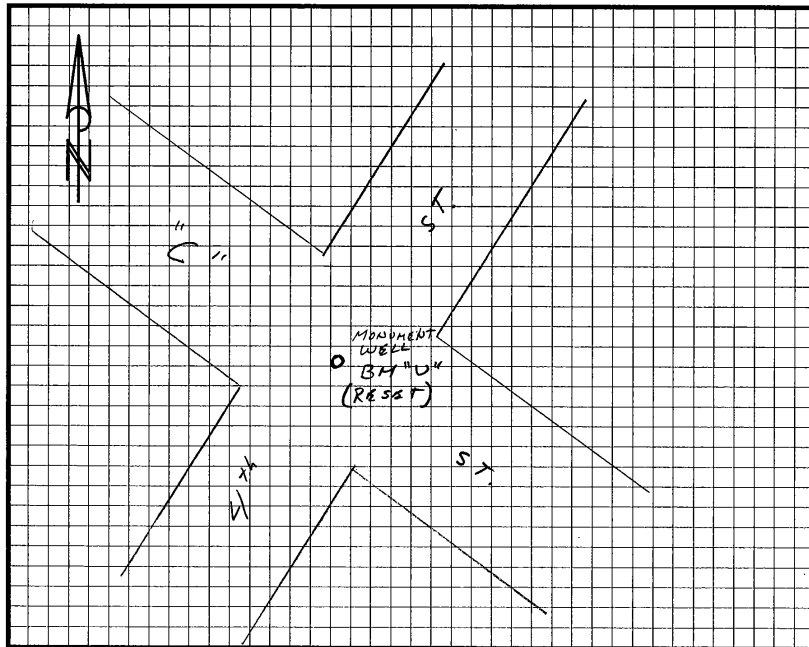
STATION DESCRIPTION & SKETCH

JN 11559-00 Project Name: City of Rocklin Control Network

QUADRANGLE NAME: Rocklin STATION NAME: "U" (R8-13)
Approximate Latitude: 38°47'23.29" Approximate Longitude: 121°14'32.96"

Described by: W. Wilson Date: 12-02-02

To reach the point Go to intersection of 4th St & "C" St center of intersection monument in wall



The point is marked by BRASS CAP and is 0.7' ± below the ground.
BRASS CAP IS STAMPED "LS 4600"

