

STATION DESCRIPTION & SKETCH

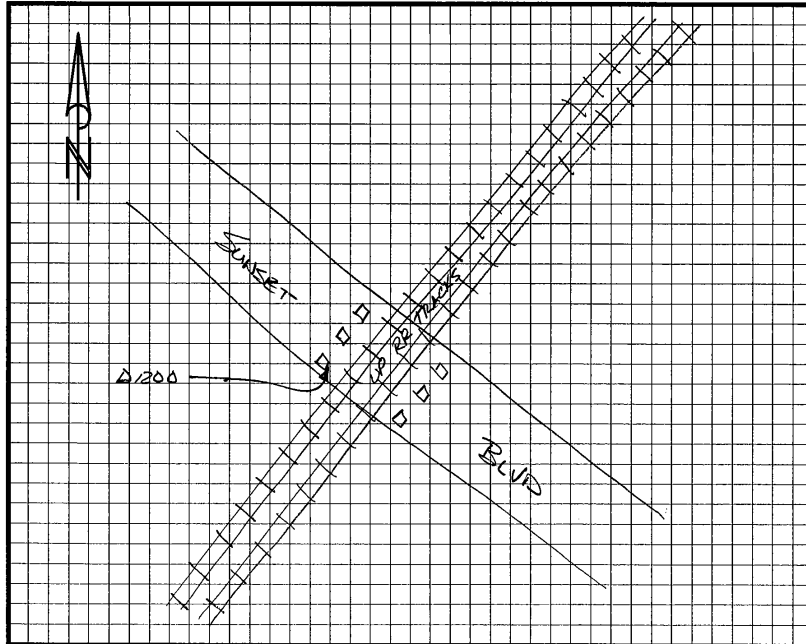
JN 11559-00 Project Name: City of Rocklin Control Network

QUADRANGLE NAME: Roseville STATION NAME: D1200 (24'V') (R 8-1)

Approximate Latitude: 38°46'56.99"N Approximate Longitude: 121°14'33.9W

Described by: D. REMINGTON Date: 1-8-03

To reach the point is @ BRIDGE of SUNSET BLVD OVER U.P. RAILROAD TRACKS



The point is marked by 1/8" 465 BRASS DISC and is 3[±] ABOVE the ground.
THE STATION IS THE SOUTHEAST FACE of PIER on WESTERLY SIDE of
U.P. RR TRACKS. PIER is MOST SOUTHERLY of THREE PIERS on WEST
SIDE of TRACT. PIER is FOR BRIDGE of SUNSET BLVD OVER TRACKS

