

ANDREGG, INC.

SURVEYING • MAPPING • GEOMATICS

STATION DESCRIPTION & SKETCH

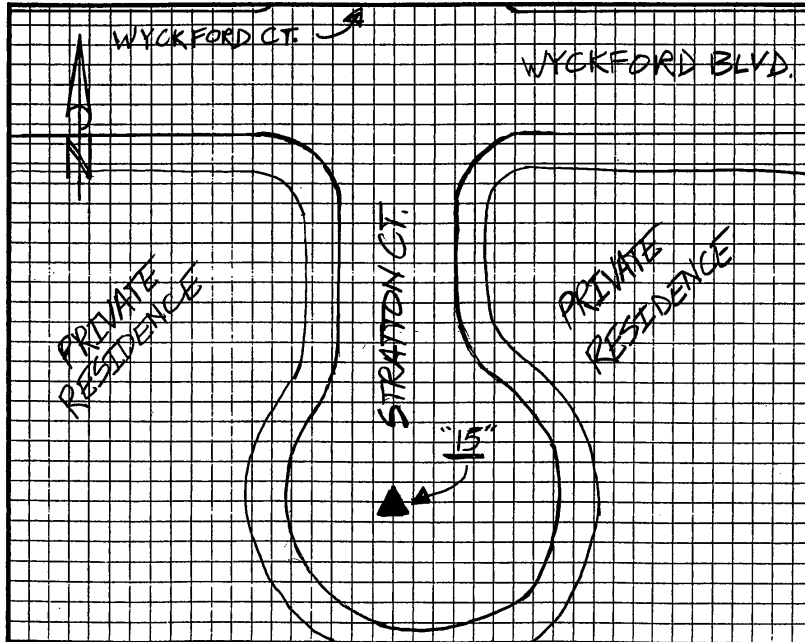
JN 11559-00 - Project Name: City of Rocklin Control Net.

QUADRANGLE NAME: ROSEVILLE STATION NAME: "15" (R10-4)

Approximate Latitude: 38°49'28.87"N Approximate Longitude: 121°15'25.63"W

Described by: R. Zinke Date: 02/11/03

To reach the point FROM THE INTX. OF WYCKFORD BLVD AND STRATTON CT. HEAD SOUTH ON STRATTON CT TO CUL-DE-SAC AND STATION @ ± CENTER OF CUL-DE-SAC.



The point is marked by 2" BRASS DISC and is 0.34 BELOW the ground.
STATION IS IN A MONUMENT WELL W/ A PUNCH MARK
AND IS STAMPED "RCE 21478"

