

City of Rocklin

3970 Rocklin Road
Rocklin, California 95677-2720
O | 916.625.5000
F | 916.625.5095
www.rocklin.ca.us

July 19, 2007

To: Agencies and Interested Parties

RE: Amendments and Inserts for the Clover Valley Large and Small Lot Tentative Subdivision Map Final EIR (FEIR) SCH # 93122077

Notices regarding the availability of the Clover Valley Final EIR (FEIR) were previously distributed. Since that time, it has come to staff's attention that:

- (1) Chapter 2 of the Final EIR, Revisions to DEIR Text, was a prior draft version of that chapter that was inadvertently included and published.
- (2) Some of the figures and technical data referenced in Appendices B through F of the Final EIR were not incorporated into the original document.

A revised Chapter 2 and the inserts for the various appendices have been assembled and are either attached or available for review or pick-up at the Rocklin Planning Department, 3970 Rocklin Road, during normal business hours from 8:00 a.m. to 5:00 p.m. These documents are also available for review at the Placer County Library at 5460 Fifth Street in Rocklin, the Sierra College Library at 5000 Rocklin Road in Rocklin, and the documents have been posted on the City of Rocklin's web site at <http://www.rocklin.ca.us/CloverValleyFinalEIR>.

P:\PUBLIC PLANNING FILES\Notice\2007\071907 Clover Valley - FEIR Notice Re Chapter 2 and Appendices.doc

Information 916.625.5000

Administrative Services 916.625.5000 • City Hall 916.625.5560 • Community Development 916.625.5100
Community Services & Facilities 916.625.5200 • Fire 916.625.5300 • Police 916.625.5400 • Public Works 916.625.5500

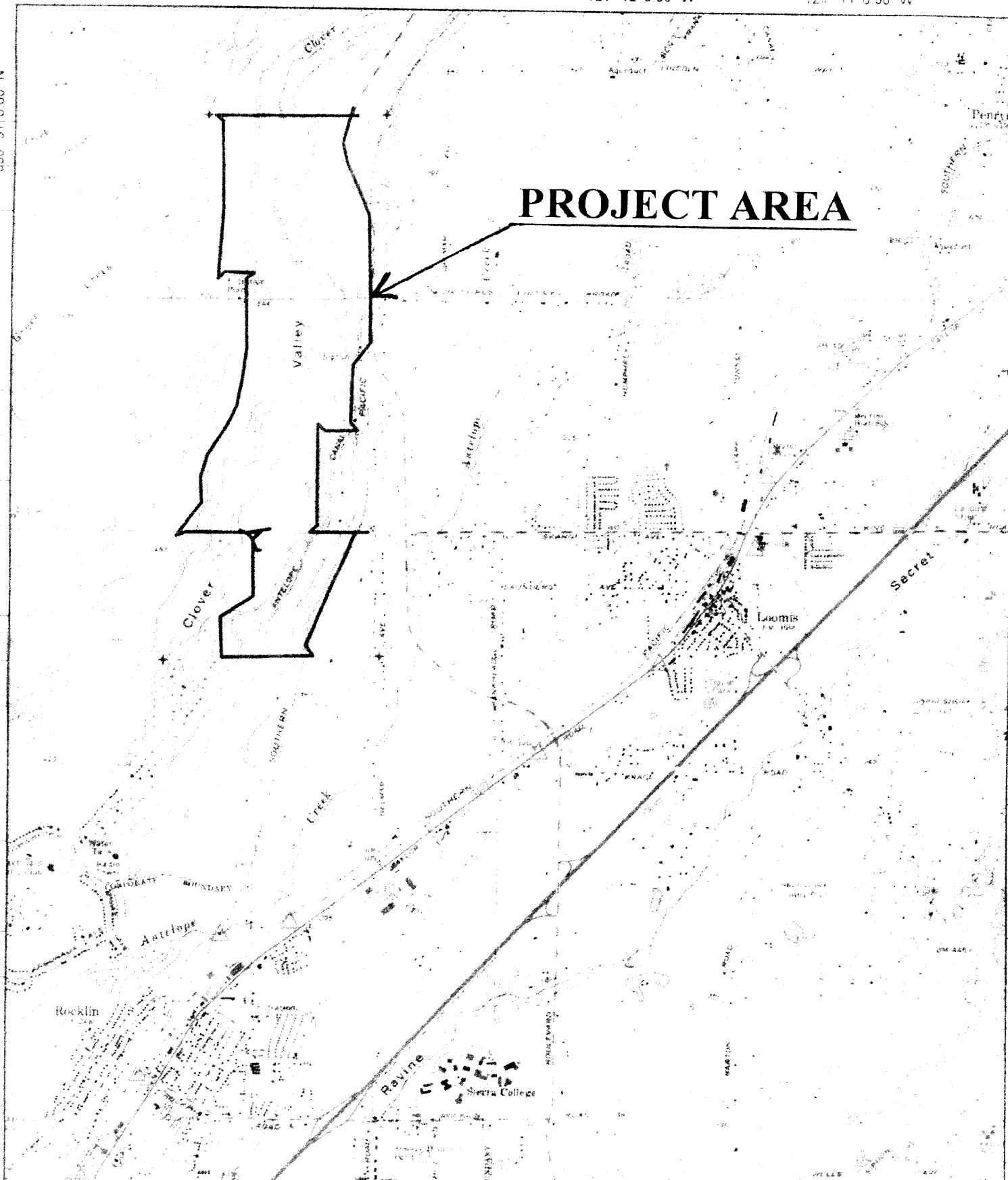
Appendix B - Dittes and Guardino Special Status Plant Species Investigation

Figure 1- Vicinity Map

Figure 2 - Boundary of Project Area and GPS Survey Routes

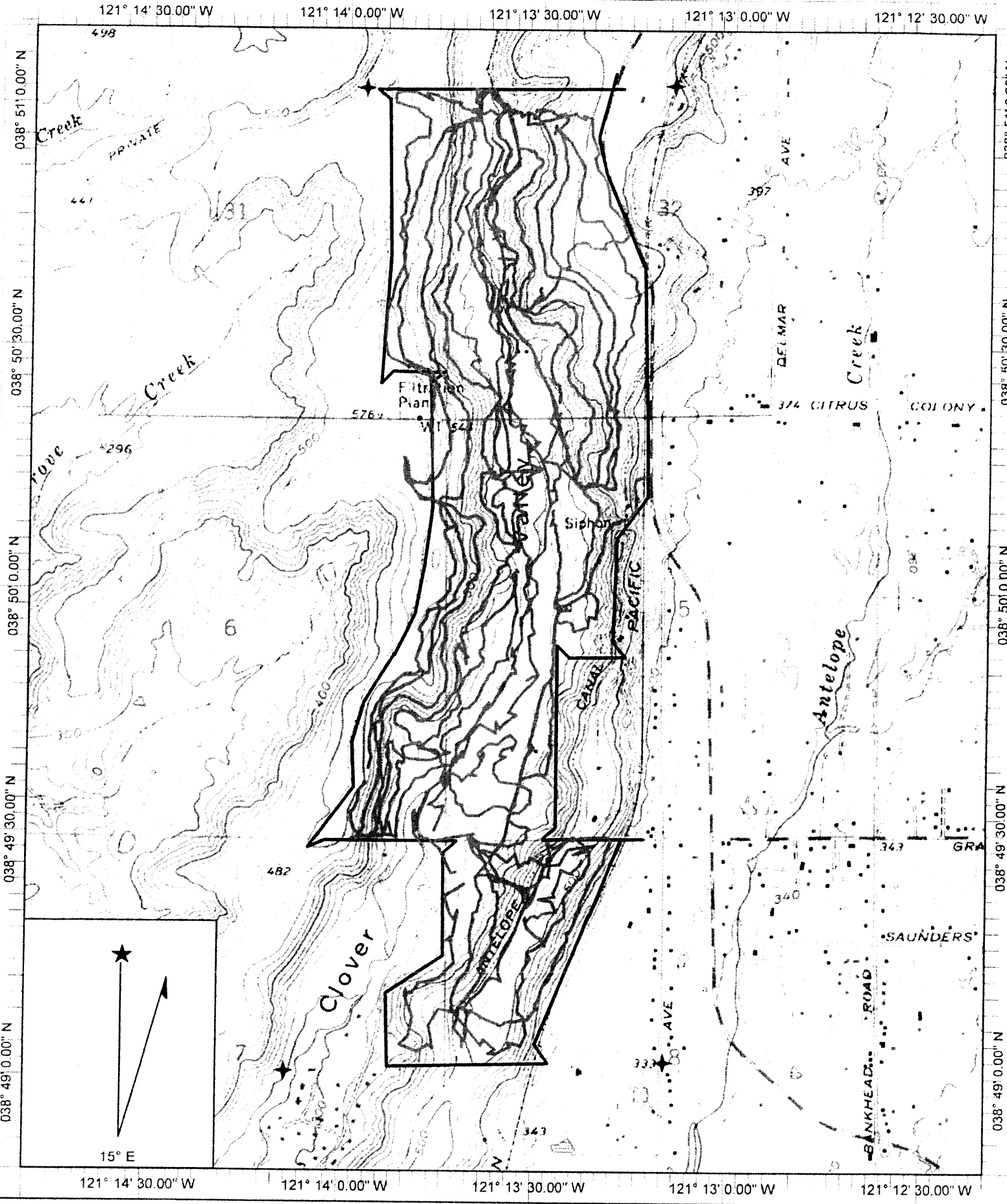
Appendix 1 - Plant Species Identified at the Proposed Clover Valley Subdivision

PROJECT AREA



Name: ROCKLIN
 Date: 7/17/2006
 Scale: 1 inch equals 2857 feet

Location: 038° 49' 15.20" N 121° 12' 33.22" W
 Caption: Figure 1. Proposed Clover Valley Subdivision Project Vicinity and Boundary; Near Rocklin, Placer County, CA



Name: ROCKLIN
 Date: 7/17/2006
 Scale: 1 inch equals 1538 feet
 Dittes & Gardino Consulting

**"Red-Lines" Indicate
 Survey Routes**

Location: 038° 49' 58.89" N 121° 13' 33.95" W
 Caption: Figure 2. Proposed Clover Valley Subdivision Project; Botany
 Survey Routes; June 8, 12, July 13, 2006

Appendix 1. Plant Species Identified at the Proposed Clover Valley Subdivision Project Area; Rocklin, Placer County, CA

SCIENTIFIC NAME	COMMON NAME
ACERACEAE	
<i>Acer negundo</i> var. <i>californicum</i>	Box-elder
ALISMATACEAE	
<i>Sagittaria latifolia</i>	Tule-potato
AMARANTHACEAE	
<i>Amaranthus blitoides</i>	Mat Amaranth
ANACARDIACEAE	
<i>Toxicodendron diversilobum</i>	Western Poison-oak
APIACEAE	
<i>Angelica californica</i>	California Angelica
<i>Daucus carota</i> +	Queen Anne's Lace
<i>Daucus pusillus</i>	Rattlesnake-weed
<i>Foeniculum vulgare</i> +	Fennel
<i>Sanicula bipinnata</i>	Poison Sanicle
<i>Sanicula crassicaulis</i>	Pacific Sanicle
<i>Torilis arvensis</i> +	Common Hedge-parsley
<i>Yabea microcarpa</i>	False Hedge-parsley
ARISTOLOCHICEAE	
<i>Aristolochia californica</i>	California pipevine
ASCLEPIADACEAE	
<i>Asclepias cordifolia</i>	Purple Milkweed
<i>Asclepias fascicularis</i>	Narrow-leaved Milkweed
<i>Asclepias speciosa</i>	Showy Milkweed
ASTERACEAE	
<i>Achyrochaena mollis</i>	Blow-wives
<i>Ambrosia psilostachya</i>	Western Ragweed
<i>Artemisia douglasiana</i>	Mugwort
<i>Baccharis pilularis</i>	Coyote Brush
<i>Bidens frondosa</i> +	Sticktight
<i>Carduus pycnocephalus</i> +	Italian Plumeless-thistle
<i>Centaurea solstitialis</i> +	Yellow Star Thistle
<i>Cirsium vulgare</i> +	Bull Thistle
<i>Chamomilla suaveolens</i>	Common Pineapple-weed
<i>Chondrilla juncea</i> +	Skeleton-weed
<i>Cichorium intybus</i> +	Chicory
<i>Conyza canadensis</i>	Canadian Horseweed
<i>Erigeron foliosus</i> var. <i>hartwegii</i>	Leafy Daisy
<i>Euthamia occidentalis</i>	Western Goldenrod
<i>Filago gallica</i>	Narrow-leaved Filago
<i>Gnaphalium palustre</i>	Western Marsh Cudweed

Appendix 1. Plant Species Identified at the Proposed Clover Valley Subdivision Project Area; Rocklin, Placer County, CA

SCIENTIFIC NAME	COMMON NAME
<i>Helenium puberulum</i>	Rosilla
<i>Hemizonia fitchii</i>	Fitch's Spikeweed
<i>Holocarpha virgata</i> ssp. v.	Wand Tarweed
<i>Hypochaeris glabra</i> +	Smooth Cat's-ear
<i>Lactuca serriola</i> +	Prickly Lettuce
<i>Leontodon taraxacoides</i> +	Hawkbit
<i>Madia elegans</i> ssp. <i>vernalis</i>	Elegant Madia
<i>Madia gracilis</i>	Slender Tarweed
<i>Micropus californicus</i> var. <i>c.</i>	Slender Cottonweed
<i>Picris echioides</i> +	Bristly Ox-tongue
<i>Psilocarphus oregonus</i>	Oregon Woolly-marbles
<i>Solidago californica</i>	California goldenrod
<i>Soliva sessilis</i> +	Lawn Burweed
<i>Sonchus asper</i> ssp. <i>a.</i> +	Spiny-leaved Sow-thistle
<i>Sonchus oleraceus</i> +	Common Sow-thistle
<i>Tragopogon dubius</i> +	Yellow Salsify
<i>Xanthium strumarium</i>	Cocklebur
<i>Wyethia angustifolia</i>	Narrow-leaved Mule Ears
BETULACEAE	
<i>Alnus rhombifolia</i>	White Alder
BORAGINACEAE	
<i>Amsinckia menziesii</i> var. <i>intermedia</i>	Common Fiddleneck
<i>Amsinckia menziesii</i> var. <i>m.</i>	Menzies' Fiddleneck
<i>Myosotis laxa</i>	Bay Forget-me-not
<i>Plagiobothrys nothofulvus</i>	Common Popcorn-flower
BRASSICACEAE	
<i>Capsella bursa-pastoris</i> +	Shepherds's Purse
<i>Draba verna</i>	Spring Whitlow-grass
<i>Hirschfeldia incana</i> +	Mediterranean Hoary-mustard
<i>Lepidium campestre</i> +	English Pepper-grass
<i>Raphanus sativus</i> +	Radish
<i>Rorippa curvisiliqua</i> var. <i>c.</i>	Western Yellowcress
<i>Rorippa nasturtium-aquaticum</i>	Watercress
CAPRIFOLIACEAE	
<i>Sambucus mexicana</i>	Blue Elderberry
<i>Symphoricarpos mollis</i>	Creeping Snowberry
<i>Lonicera</i> sp.	Honeysuckle
CARYOPHYLLACEAE	
<i>Cerastrium glomeratum</i>	Sticky Mouse-eared Chickweed
<i>Petrorhagia dubia</i> +	Grass Pink

Appendix 1. Plant Species Identified at the Proposed Clover Valley Subdivision Project Area; Rocklin, Placer County, CA

SCIENTIFIC NAME	COMMON NAME
<i>Silene gallica</i>	Windmill-pink
<i>Spergularia rubra</i> +	Ruby Sandspurry
<i>Stellaria media</i> +	Common Chickweed
CHENOPODIACEAE	
<i>Chenopodium ambrosiodes</i> +	Mexican-tea
CONVOLVULACEAE	
<i>Calystegia occidentalis</i> ssp. o.	Western Morning-glory
<i>Convolvulus arvensis</i> +	Bindweed
CRASSULACEAE	
<i>Crassula connata</i>	Pigmyweed
<i>Parvisedum pumillum</i>	Dwarf-stonecrop
CUCURBITACEAE	
<i>Marah fabaceus</i> var. <i>agrestis</i>	California Manwort
CUPRESSACEAE	
<i>Calocedrus decurrens</i>	Incense-cedar
CYPERACEAE	
<i>Carex densa</i>	Dense Sedge
<i>Carex</i> sp.	Sedge
<i>Carex barbarae</i>	Santa Barbara Sedge
<i>Carex praegracilis</i>	Clustered Field Sedge
<i>Cyperus eragrostis</i>	Tall Cyperus
<i>Cyperus</i> sp.	Cyperus
<i>Eleocharis macrostachys</i>	Common Spikerush
<i>Eleocharis pauciflora</i>	Few-flowered Spikerush
<i>Eleocharis</i> sp.	Spikerush
<i>Scirpus acutus</i>	Hard-stemmed Tule
EQUISETACEAE	
<i>Equisetum</i> sp.	Scouring Rush
EUPHORBIACEAE	
<i>Eremocarpus setigerus</i>	Turkey-mullein
FABACEAE	
<i>Acacia</i> sp.+	Wattle
<i>Hoita macrostachya?</i> (no flws)	Large Leather-root
<i>Lathyrus</i> sp.	
<i>Lotus purshianus</i> var p.	Spanish Lotus
<i>Lupinus bicolor</i>	Bicolored/Miniature Lupine
<i>Lupinus nanus</i>	Sky Lupine
<i>Lupinus</i> sp. (no flws)	Lupine
<i>Medicago polymorpha</i> +	Common Bur-clover
<i>Trifolium dubium</i> +	Little Hop Clover

Appendix 1. Plant Species Identified at the Proposed Clover Valley Subdivision Project Area; Rocklin, Placer County, CA

SCIENTIFIC NAME	COMMON NAME
<i>Trifolium fragiferum</i>	Strawberry Clover
<i>Trifolium glomeratum</i> +	Sessile-headed Clover
<i>Trifolium hirtum</i> +	Rose Clover
<i>Trifolium subterraneanum</i>	Subterranean Clover
<i>Trifolium</i> sp. (no flws)	Clover
<i>Vicia americana</i>	American vetch
<i>Vicia villosa</i> ssp. <i>villosa</i> .+	Winter Vetch
FAGACEAE	
<i>Quercus berberidifolia</i>	Scrub Oak
<i>Quercus douglassi</i>	Blue Oak
<i>Quercus lobata</i>	Valley Oak
<i>Quercus wislizeni</i> var. <i>w.</i>	Interior Live-oak
GENTIANACEAE	
<i>Centaurium muehlenbergii</i>	June Centaury
GERANIACEAE	
<i>Erodium botrys</i> +	Long-Beaked Stork's Bill
<i>Geranium dissectum</i> +	Cut-leaved Geranium
<i>Geranium molle</i> +	Dove's-Foot Geranium
HIPPOCASTANACEAE	
<i>Aesculus californica</i>	California Buckeye
HYPERICACEAE	
<i>Hypericum perforatum</i> +	Klamathweed
<i>Hypericum formosum</i> var. <i>scouleri</i>	Scouler's St. John's-wort
JUGLANDACEAE	
<i>Juglans</i> sp.	Black Walnut
JUNCACEAE	
<i>Juncus acuminatus</i>	Sharp-fruited Rush
<i>Juncus balticus</i>	Baltic Rush
<i>Juncus bufonius</i>	Toad Rush
<i>Juncus effusus</i> var. <i>pacificus</i>	Pacific Bog-rush
<i>Juncus</i> sp.	Rush
<i>Juncus xiphiodes</i>	Iris-leaved Rush
LAMIACEAE	
<i>Lycopus americanus</i>	American Bugleweed
<i>Marrubium vulgare</i> +	Horehound
<i>Mentha arvensis</i>	American Wild Mint
<i>Mentha pulegium</i> +	Pennyroyal
<i>Stachys ajugoides</i> var. <i>rigida</i>	Rigid Hedge-nettle
<i>Stachys stricta</i>	Sonoma Hedge-nettle
<i>Scutellaria californica</i>	California Skullcap

Appendix 1. Plant Species Identified at the Proposed Clover Valley Subdivision Project Area; Rocklin, Placer County, CA

SCIENTIFIC NAME	COMMON NAME
<i>Trichostema lanceolata</i>	Vinegar Weed
LILIACEAE	
<i>Brodiaea elegans</i> ssp. e.	Elegant Brodiaea
<i>Calochortus luteus</i>	Yellow Mariposa-lily
<i>Chlorogalum pomeridianum</i> var. p.	Wavy-leaved Soap-plant
<i>Dichelostemma capitatum</i> ssp. c.	Blue-dicks
<i>Dichelostemma multiflorum</i>	Round-toothed Ookow
<i>Dichlelostemma volubile</i>	Twining Ookow
<i>Triteleia hyacinthina</i>	Wild Hyacinth
LINACEAE	
<i>Hesperolinum micranthum</i>	Small-flowered Western-flax
LYTHRACEAE	
<i>Lythrum hyssopifolium</i> +	Hyssop Loosestrife
MALVACEAE	
<i>Malva parviflora</i> +	Little Mallow
MOLLUGININACEAE	
<i>Molluga verticillata</i> +	Indian Chickweed
MORACEAE	
<i>Ficus carica</i>	Edible Fig
<i>Maclura pomifera</i>	Osage-orange
OLEACEAE	
<i>Fraxinus</i> sp.	Ash
<i>Fraxinus latifolius</i>	Oregon Ash
<i>Olea europaea</i>	Olive
ONAGRACEAE	
<i>Clarkia purpurea</i> ssp. <i>quadrivulnera</i>	Purple Clarkia
<i>Clarkia unguiculata</i>	Elegant Clarkia
<i>Epilobium brachycarpum</i>	Tall Annual Willowherb
<i>Epilobium ciliatum</i> ssp. c.	Fringed Willowherb
<i>Epilobium densiflorum</i>	Dense-flowered Spike-primrose
<i>Epilobium torreyi</i>	Torrey's Spike-primrose
<i>Epilobium</i> sp.	Willow-herb
ORCHIDACEAE	
<i>Piperia</i> sp.	Piperia
OXALIDACEAE	
<i>Oxalis</i> sp.+	Sorrel
PAPAVERACEAE	
<i>Eschscholzia californica</i>	California Poppy
PHYTOLACCACEAE	
<i>Phytolacca americana</i> +	American Pokeweed

Appendix 1. Plant Species Identified at the Proposed Clover Valley Subdivision Project Area; Rocklin, Placer County, CA

SCIENTIFIC NAME	COMMON NAME
PINACEAE	
<i>Pinus sabiniana</i>	Gray Pine
PLANTAGINACEAE	
<i>Plantago coronopus</i> +	Cut-leaved Plantain
<i>Plantago erecta</i>	Erect Plantain
<i>Plantago lanceolata</i> +	English Plantain
<i>Plantago major</i> +	Plantain
POACEAE	
<i>Aegilops trunci</i> +	Barbed Goatgrass
<i>Agrostis</i> sp.	Bentgrass
<i>Aira caryophylla</i> +	Silver European Hair Grass
<i>Avena</i> sp. +	Wild Oats
<i>Briza minor</i>	Lesser Quaking Grass
<i>Bromus diandrus</i> +	Rippgut Brome
<i>Bromus hordeaceus</i> +	Soft Chess
<i>Bromus madritensis</i> ssp. <i>m</i>	Spanish Brome
<i>Cynodon dactylon</i> +	Bermuda-grass
<i>Cynosurus echinatus</i> +	Hedgehog Dogtail Grass
<i>Deschampsia danthonioides</i>	Annual Hairgrass
<i>Echinochloa colona</i> +	Jungle-rice
<i>Elymus glaucus</i> ssp. <i>g.</i>	Blue Wild-rye
<i>Gastridium ventricosum</i> +	Nitgrass
<i>Glyceria declinata</i> +	Manna Grass
<i>Holcus lanatus</i> +	Common Velvetgrass
<i>Hordeum marinum</i> ssp. <i>gussoneanum</i> +	Mediterranean Barley
<i>Hordeum murinum</i> ssp. <i>leporinum</i> +	Hare Wall Barley
<i>Festuca arundinacea</i> +	Tall Fescue
<i>Leersia oryzoides</i>	Rice Cutgrass
<i>Leymus triticoides</i>	Alkali Ryegrass
<i>Lolium multiflorum</i> +	Annual Ryegrass
<i>Melica californica</i>	California melic
<i>Muhlenbergia rigens</i>	Deergrass
<i>Nassella</i> sp.	Needlegrass
<i>Paspalum dilatatum</i> +	Dallisgrass
<i>Poa annua</i> +	Annual Bluegrass
<i>Poa bulbosa</i> +	Bulbous Bluegrass
<i>Poa secunda</i> ssp. <i>s.</i>	One-Sided Bluegrass
<i>Polypogon australis</i> +	Southern Beardgrass
<i>Polypogon monspeliensis</i> +	Annual Beardgrass
<i>Taeniatherum caput-medusae</i> +	Medusahead

Appendix 1. Plant Species Identified at the Proposed Clover Valley Subdivision Project Area; Rocklin, Placer County, CA

SCIENTIFIC NAME	COMMON NAME
<i>Vulpia bromoides</i> +	Six-week Fescue
<i>Vulpia myuros</i> +	Rattail Fescue
<i>Vulpia microstachys</i> var. <i>pauciflora</i>	Few-flowered Fescue
POLEMONIACEAE	
<i>Navarretia intertexta</i> ssp. <i>i.</i>	Needle-leaved Navarretia
<i>Navarretia pubescens</i>	Downy Navarretia
POLYGONACEAE	
<i>Polygonum arenastrum</i> +	Common Knotweed
<i>Polygonum hydropiperoides</i>	Mild Water-pepper
<i>Polygonum persicaria</i> +	Lady's-thumb
<i>Rumex crispus</i> +	Curly Dock
<i>Rumex pulcher</i> +	Fiddle Dock
PORTULACACEAE	
<i>Claytonia perfoliata</i>	Common Miner's Lettuce
<i>Portulaca oleraceae</i> +	Common Purslane
PRIMULACEAE	
<i>Anagallis arvensis</i>	Scarlet Pimpernel
PTERIDACEAE	
<i>Adiantum jordanii</i>	California Maidenhair
<i>Pellaea andromedifolia</i>	Coffee Fern
<i>Pityrogramma triangularis</i>	Golden-back Fern
<i>Woodwardia fimbriata</i>	Giant Chain-Fern
RHAMNACEAE	
<i>Ceanothus cuneatus</i>	Buckbrush
<i>Rhamnus ilicifolia</i>	Holly-leaved Redberry
<i>Rhamnus tomentella</i> ssp. <i>t.</i>	Hoary Coffeeberry
ROSACEAE	
<i>Heteromeles arbutifolia</i>	Toyon
<i>Potentilla glandulosa</i>	Sticky Cinquefoil
<i>Prunus dulcis</i>	Almond
<i>Rosa californica</i>	California Rose
<i>Rubus discolor</i> +	Himalayan Blackberry
<i>Rubus ursinus</i>	California Blackberry
RUBIACEAE	
<i>Cephalanthus occidentalis</i> var. <i>californicus</i>	California Button-willow
<i>Galium aparine</i> +	Cleavers
<i>Galium parisiense</i> +	Wall Bedstraw
<i>Galium porrigens</i> var. <i>tenue</i>	Narrow-leaved Climbing Bedstraw
SALICACEAE	
<i>Populus fremontii</i> ssp. <i>f.</i>	Fremont Cottonwood

Appendix 1. Plant Species Identified at the Proposed Clover Valley Subdivision Project Area; Rocklin, Placer County, CA

SCIENTIFIC NAME	COMMON NAME
<i>Salix exigua</i>	Sandbar Willow
<i>Salix gooddingii</i>	Goodding's Black Willow
<i>Salix lasiolepis</i>	Arroyo Willow
<i>Salix laevigata</i>	Red Willow
<i>Salix lucida</i> ssp. <i>lasiandra</i>	Yellow Willow
SCROPHULARIACEAE	
<i>Castilleja attenuata</i>	Valley-tassels
<i>Keckiella breviflora</i> var. <i>glabrisepala</i>	Gaping Keckiella
<i>Mimulus aurantiacus</i> ssp. <i>a.</i>	Bush Monkey-flower
<i>Mimulus guttatus</i>	Common Monkey-flower
<i>Scrophularia californica</i>	California Figwort
<i>Verbascum blattaria</i> +	Moth Mullein
<i>Verbascum thapsus</i> +	Woolly Mullein
<i>Veronica americana</i>	American Brooklime
<i>Veronica perigrina</i> ssp. <i>xalapensis</i>	Purslane Speedwell
SOLANACEAE	
<i>Nicotiana acuminata</i> var. <i>multiflora</i> +	Many-flowered Tobacco
<i>Solanum americanum</i>	American Black Nightshade
<i>Solanum parishii</i>	Parish's Nightshade
TYPHACEAE	
<i>Typha</i> sp.	Cattail
URTICACEAE	
<i>Urtica dioica</i> ssp. <i>holosericea</i>	Stinging Nettle
<i>Urtica urens</i> +	Burning nettle
VERBENACEAE	
<i>Phyla nodiflora</i>	Lippia
<i>Verbena litoralis</i> +	Shore Vervain
VISCACEAE	
<i>Phoradendron villosum</i>	Hairy Mistletoe
VITACEAE	
<i>Vitis californica</i>	California Wildgrape

Appendix C - Foothill Yellow-Legged Frog Habitat Assessment and Survey at Clover Valley

Appendix A - CNDDDB, MVZ, and CAS FYLF Occurrence/Specimen Records

Appendix B - Copy of Field Data Sheets

APPENDIX A

CNDDDB, MVZ, and CAS FYLF Occurrence/Specimen Records

Rana boylei

foothill yellow-legged frog

Element Code: AAABH01050

----- Status ----- NDDB Element Ranks ----- Other Lists -----
Federal: None Global: G3 CDFG Status: SC
State: None State: S2S3

----- Habitat Associations -----

General: PARTLY-SHADED, SHALLOW STREAMS & RIFFLES WITH A ROCKY SUBSTRATE IN A VARIETY OF HABITATS.
Micro: NEED AT LEAST SOME COBBLE-SIZED SUBSTRATE FOR EGG-LAYING. NEED AT LEAST 15 WEEKS TO ATTAIN METAMORPHOSIS.

Occurrence No. 389 Map Index: 53198 EO Index: 53198 ----- Dates Last Seen -----
Occ Rank: Excellent Element: 2003-10-27
Origin: Natural/Native occurrence Site: 2003-10-27
Presence: Presumed Extant
Trend: Unknown
Main Source: CRANSTON, P. 2003 (OBS) Record Last Updated: 2003-11-06

Quad Summary: COLOMA (3812078/526C)
County Summary: EL DORADO

Lat/Long: 38.83467° / -120.90623° Township: 11N
UTM: Zone-10 N4300513 E681732 Range: 10E
Mapping Precision: NON-SPECIFIC Section: 06 Qtr: XX
Symbol Type: POLYGON Meridian: M
Area: 70.3 ac Elevation: 1,000 ft

Location: INDIAN CREEK, TRIBUTARY TO THE SOUTH FORK OF THE AMERICAN RIVER, 2 MILES NORTH OF LOTUS
Location Detail:
Ecological: HABITAT CONSISTS OF A PERENNIAL STREAM WITH INTERMITTENT POOLS.
Threat:
General: >100 ADULTS AND JUVENILES OBSERVED ON 27 OCT 2003.
Owner/Manager: BLM

----- Sources -----

CRA03F01 CRANSTON, PEGGY (BLM). FIELD SURVEY FORM FOR RANA BOYLII. 2003-10-27.

Rana boylei

foothill yellow-legged frog

Element Code: AAABH01050

----- Status ----- NDDB Element Ranks ----- Other Lists -----
Federal: None Global: G3 CDFG Status: SC
State: None State: S2S3

----- Habitat Associations -----

General: PARTLY-SHADED, SHALLOW STREAMS & RIFFLES WITH A ROCKY SUBSTRATE IN A VARIETY OF HABITATS.
Micro: NEED AT LEAST SOME COBBLE-SIZED SUBSTRATE FOR EGG-LAYING. NEED AT LEAST 15 WEEKS TO ATTAIN METAMORPHOSIS.

Occurrence No. 301 Map Index: 45495 EO Index: 45495 ----- Dates Last Seen -----
Occ Rank: Excellent Element: 2000-04-20
Origin: Natural/Native occurrence Site: 2000-04-20
Presence: Presumed Extant
Trend: Unknown
Main Source: WISHNER, C. & K. WIESE 2000 (OBS) Record Last Updated: 2001-08-03

Quad Summary: COLFAX (3912018/541C)
County Summary: PLACER

Lat/Long: 39.04266° / -120.92382° Township: 14N
UTM: Zone-10 N4323561 E679680 Range: 09E
Mapping Precision: SPECIFIC Section: 24 Qtr: SE
Symbol Type: POINT Meridian: M
Radius: 80 meters Elevation: 1,420 ft

Location: 2.75 AIR MILES EAST OF WEIMAR, NEAR BAUER MINE ALONG YANKEE JIM ROAD.
Location Detail: WATERFALL ON SOUTH-FACING SLOPE ALONG YANKEE JIM ROAD.
Ecological: AQUATIC HABITAT IN FOOTHILL WOODLAND: QUERCUS CHRYSOLEPIS, PINUS SABINIANA AND AESCULUS CALIFORNICA. SUBSTRATE IS A RED SHALE.
Threat:
General: 1 ADULT FOUND.
Owner/Manager: DPR-AUBURN SRA

----- Sources -----

WIS00F01 WISHNER, CARL & KAREN WIESE. FIELD SURVEY FORM FOR RANA BOYLII. 2000-04-20.

Rana boylei

foothill yellow-legged frog

Element Code: AAABH01050

----- Status ----- NDDB Element Ranks ----- Other Lists -----
Federal: None Global: G3 CDFG Status: SC
State: None State: S2S3

----- Habitat Associations -----

General: PARTLY-SHADED, SHALLOW STREAMS & RIFFLES WITH A ROCKY SUBSTRATE IN A VARIETY OF HABITATS.
Micro: NEED AT LEAST SOME COBBLE-SIZED SUBSTRATE FOR EGG-LAYING. NEED AT LEAST 15 WEEKS TO ATTAIN METAMORPHOSIS.

Occurrence No. 392 Map Index: 53509 EO Index: 53509 ----- Dates Last Seen -----
Occ Rank: Good Element: 2003-11-02
Origin: Natural/Native occurrence Site: 2003-11-02
Presence: Presumed Extant
Trend: Unknown
Main Source: WALTERS, S. AND D. SCHMOLDT 2003 (OBS) Record Last Updated: 2003-12-08

Quad Summary: GREENWOOD (3812088/526B)
County Summary: PLACER

Lat/Long: 38.96251° / -120.92334° Township: 13N
UTM: Zone-10 N4314668 E679924 Range: 09E
Mapping Precision: SPECIFIC Section: 24 Qtr: NE
Symbol Type: POINT Meridian: M
Radius: 80 meters Elevation: 870 ft

Location: PARADISE CANYON (TODD CREEK), TRIBUTARY TO THE MIDDLE FORK OF THE AMERICAN RIVER, AUBURN STATE RECREATION AREA
Location Detail: SITE IS ACCESSED EAST OF AUBURN, FROM FORESTHILL ROAD, AT DRIVERS FLAT TRAILHEAD.
Ecological: HABITAT CONSISTS OF A STEEP WATERSHED THAT DRAINS INTO THE AMERICAN RIVER. CREEK VEGETATION INCLUDES SAND BAR AND BLACK WILLOW, ALDER, BLACKBERRY, WILD GRAPE AND, WHITE ALDER; SURROUNDED BY INTERIOR LIVE OAK WOODLAND/FOOTHILL PINE HABITAT.
Threat: THREATS INCLUDE NON-NATIVE PLANT (FIG, TREE OF HEAVEN) INVASION, GOLD DREDGING, AND RELEASE OF NON-NATIVES UP-STREAM.
General: 1 SUB-ADULT (TORSO LENGTH = 1/2") FROG OBSERVED IN A DAMP SPOT ON 2 NOV 2003.
Owner/Manager: BLM, DFG

----- Sources -----
WAL03F02 WALTERS, SALLY AND DONALD SCHMOLDT (DPR). FIELD SURVEY FORM FOR RANA BOYLII. 2003-11-02.

Rana boylei

foothill yellow-legged frog

Element Code: AAABH01050

_____ Status _____	NDDDB Element Ranks	_____ Other Lists _____
Federal: None	Global: G3	CDFG Status: SC
State: None	State: S2S3	

_____ Habitat Associations _____

General: PARTLY-SHADED, SHALLOW STREAMS & RIFFLES WITH A ROCKY SUBSTRATE IN A VARIETY OF HABITATS.
Micro: NEED AT LEAST SOME COBBLE-SIZED SUBSTRATE FOR EGG-LAYING. NEED AT LEAST 15 WEEKS TO ATTAIN METAMORPHOSIS.

Occurrence No. 393	Map Index: 53511	EO Index: 53511	_____ Dates Last Seen _____
Occ Rank: Good			Element: 2003-11-02
Origin: Natural/Native occurrence			Site: 2003-11-02
Presence: Presumed Extant			
Trend: Unknown			
Main Source: WALTERS, S. AND D. SCHMOLDT 2003 (OBS)		Record Last Updated: 2003-12-08	

Quad Summary: GREENWOOD (3812088/526B)
County Summary: PLACER

Lat/Long: 38.96446° / -120.93271°	Township: 13N
UTM: Zone-10 N4314866 E679107	Range: 09E
Mapping Precision: SPECIFIC	Section: 24 Qtr: NW
Symbol Type: POLYGON	Meridian: M
Area: 12.0 ac	Elevation: 800 ft

Location: GAS CANYON CREEK, TRIBUTARY TO THE MIDDLE FORK OF THE AMERICAN RIVER, AUBURN STATE RECREATION AREA

Location Detail: SITE IS ACCESSED EAST OF AUBURN, FROM FORESTHILL ROAD, AT DRIVERS FLAT TRAILHEAD.

Ecological: HABITAT CONSISTS OF A STEEP WATERSHED THAT DRAINS INTO THE AMERICAN RIVER. CREEK VEGETATION INCLUDES SAND BAR AND BLACK WILLOW, ALDER, BLACKBERRY, WILD GRAPE AND, WHITE ALDER; SURROUNDED BY INTERIOR LIVE OAK WOODLAND/FOOTHILL PINE HABITAT.

Threat: THREATS INCLUDE NON-NATIVE PLANT (FIG, TREE OF HEAVEN) INVASION, GOLD DREDGING, AND RELEASE OF NON-NATIVES UP-STREAM.

General: 3 ADULT FROGS CAPTURED AND RELEASED (9 ADDITIONAL OBSERVED) ON 2 NOV 2003.

Owner/Manager: BLM, DFG

_____ Sources _____

WAL03F03 WALTERS, SALLY AND DONALD SCHMOLDT (DPR). FIELD SURVEY FORM FOR RANA BOYLII. 2003-11-02.

Ranidae

Rana boylei

MVZ No.: 51660

Accn No.: 8083

Locality:

Auburn

Placer Co., California, United States

Lat/Long: 38.896667; -121.075833 (datum:
WGS84)**Collector(s)/Preparator(s):**

J. B. Kimsey (#56)

Collecting Date: 19 Apr 1946**Parts:** whole animal (alcohol)**Tissues:** None**Sex:** unknown**Age:** adult/juv.**Stomach Contents:** not examined**Voucher Disposition:** in collection

[Do another query](#)[Go to MVZ query home page](#)[Contact us if you have questions.](#)[Museum of Vertebrate Zoology](#)[BSCIT](#)Search for *Rana boylei* in all Berkeley Natural History Museum collections.

Ranidae

Rana boylei

MVZ No.: 58290**Accn No.:** 8758**Locality:**3.0 mi NW Cool; elevation 1000 ft
Placer Co., California, United States**Lat/Long:** 38.919110; -121.053480 (max error
distance: 1.491 mi; datum: NAD27)**Collector(s)/Preparator(s):**
Joseph B. Gorman Jr. (#566)**Collecting Date:** 11 Apr 1952**Parts:** whole animal (alcohol)**Tissues:** None**Sex:** unknown**Age:** adult/juv.**Stomach Contents:** not examined**Voucher Disposition:** in collection

[Do another amphibian query](#)[Go to MVZ query home page](#)[Contact us if you have questions.](#)[Museum of Vertebrate Zoology](#)[BSCIT](#)Search for *Rana boylei* in all Berkeley Natural History Museum collections.

Ranidae

Rana boylii

MVZ No.: 58291

Accn No.: 8758

Locality:3.0 mi NW Cool; elevation 1000 ft
Placer Co., California, United States**Lat/Long:** 38.919110; -121.053480 (max error
distance: 1.491 mi; datum: NAD27)**Collector(s)/Preparator(s):**

Joseph B. Gorman Jr. (#567)

Collecting Date: 11 Apr 1952**Parts:** whole animal (alcohol)**Tissues:** None**Sex:** unknown**Age:** adult/juv.**Stomach Contents:** not examined**Voucher Disposition:** in collection

[Do another amphibian query](#)[Go to MVZ query home page](#)[Contact us](#) if you have questions.[Museum of Vertebrate Zoology](#)[BSCIT](#)Search for *Rana boylii* in all Berkeley Natural History Museum collections.

Ranidae

Rana boylii

MVZ No.: 58292**Accn No.:** 8758**Locality:**3.0 mi NW Cool; elevation 1000 ft
Placer Co., California, United States**Lat/Long:** 38.919110; -121.053480 (max error
distance: 1.491 mi; datum: NAD27)**Collector(s)/Preparator(s):**

Joseph B. Gorman Jr. (#568)

Collecting Date: 11 Apr 1952**Parts:** whole animal (alcohol)**Tissues:** None**Sex:** unknown**Age:** adult/juv.**Stomach Contents:** not examined**Voucher Disposition:** in collection

[Do another amphibian query](#)[Go to MVZ query home page](#)[Contact us if you have questions.](#)[Museum of Vertebrate Zoology](#)[BSCIT](#)Search for *Rana boylii* in all Berkeley Natural History Museum collections.

Ranidae***Rana boylei***

MVZ No.: 58293**Accn No.:** 8758**Locality:**3.0 mi NW Cool; elevation 1000 ft
Placer Co., California, United States**Lat/Long:** 38.919110; -121.053480 (max error
distance: 1.491 mi; datum: NAD27)**Collector(s)/Preparator(s):**

Joseph B. Gorman Jr. (#569)

Collecting Date: 11 Apr 1952**Parts:** whole animal (alcohol)**Tissues:** None**Sex:** unknown**Age:** adult/juv.**Stomach Contents:** not examined**Voucher Disposition:** in collection

[Do another amphibian query](#)[Go to MVZ query home page](#)[Contact us](#) if you have questions.[Museum of Vertebrate Zoology](#)[BSCIT](#)Search for *Rana boylei* in all Berkeley Natural History Museum collections.

Ranidae

Rana boylii

MVZ No.: 58294

Accn No.: 8758

Locality:3.0 mi NW Cool; elevation 1000 ft
Placer Co., California, United States**Lat/Long:** 38.919110; -121.053480 (max error
distance: 1.491 mi; datum: NAD27)**Collector(s)/Preparator(s):**
Joseph B. Gorman Jr. (#570)**Collecting Date:** 11 Apr 1952**Parts:** whole animal (alcohol)**Tissues:** None**Sex:** unknown**Age:** adult/juv.**Stomach Contents:** not examined**Voucher Disposition:** in collection

[Do another amphibian query](#)[Go to MVZ query home page](#)[Contact us if you have questions.](#)[Museum of Vertebrate Zoology](#)[BSCIT](#)Search for *Rana boylii* in all Berkeley Natural History Museum collections.

Ranidae***Rana boylei***

MVZ No.: 58295**Accn No.:** 8758**Locality:**3.0 mi NW Cool; elevation 1000 ft
Placer Co., California, United States**Lat/Long:** 38.919110; -121.053480 (max error
distance: 1.491 mi; datum: NAD27)**Collector(s)/Preparator(s):**

Joseph B. Gorman Jr. (#571)

Collecting Date: 11 Apr 1952**Parts:** whole animal (alcohol)**Tissues:** None**Sex:** unknown**Age:** adult/juv.**Stomach Contents:** not examined**Voucher Disposition:** in collection

[Do another query](#)[Go to MVZ query home page](#)[Contact us](#) if you have questions.[Museum of Vertebrate Zoology](#)[BSCIT](#)Search for *Rana boylei* in all Berkeley Natural History Museum collections.

Ranidae

Rana boylei

MVZ No.: 59654

Accn No.: 8859

Locality:

4 mi NW Coloma

El Dorado Co., California, United States

Lat/Long: 38.841280; -120.939830 (max error distance: 2.538 mi; datum: NAD27)**Collector(s)/Preparator(s):**

Richard G. Zweifel (#2184), William J. Riemer

Collecting Date: 1 May 1953**Parts:** whole animal (alcohol)**Tissues:** None**Sex:** unknown**Age:** adult/juv.**Stomach Contents:** not examined**Voucher Disposition:** in collection

[Do another amphibian query](#)[Go to MVZ query home page](#)[Contact us if you have questions.](#)[Museum of Vertebrate Zoology](#)[BSCIT](#)Search for *Rana boylei* in all Berkeley Natural History Museum collections.

CALIFORNIA ACADEMY OF SCIENCES

HERPETOLOGY

[About the Department](#) | [Staff](#) | [Funding Opportunities](#) | [Collections Statistics](#) | [Collection Catalog](#) | [Loan Policy](#)

[California Academy of Sciences](#) » [Research](#) » [Herpetology](#) » [Collection Catalog](#) » [Search the Catalog](#)

CAS 218322	<i>Rana boylei</i>					Ranidae
Country:	USA	State:	California	County:		Placer Co. Island(s):
Locality:	North Fork American River at confluence of Middle Fork American River			Collector(s):	M.A. Miller	
				Date Collected:	12 Apr 1953	
				Collector's (Field) Number:		
Latitude:				Coord. Source:		
Longitude:						
Stated Locality:	Middle Fork junction, North Fork American River, Placer Co., Calif.					
Life Stage:	J/A	Sex:		Pres:	Alc	Identified:
Elev:				Habitat:		
Remarks:	University of California, Davis, collection.					

[Close and Return](#)