

# STATE OF THE CITY

CITY OF ROCKLIN



ROCKLIN  
CALIFORNIA





Mayor  
**BILL HALLDIN**





# Mayor **BILL HALLDIN**



Vice-Mayor  
**KEN BROADWAY**





Councilmember  
**JILL GAYALDO**





Councilmember  
**GREG JANDA**





Councilmember  
**JOE PATTERSON**





City Manager

**ALY ZIMMERMANN**



**ROCKLIN**  
CALIFORNIA



The image shows the Rocklin Chamber of Commerce building, a single-story structure with a prominent stone clock tower. The tower has two clock faces, each with the number 12 visible. The building features a mix of stone and light-colored stucco walls, with dark window frames. In the foreground, there is a paved area with a utility pole, a sign for Rocklin, CA, and some landscaping including bushes and flowers. The sky is clear and blue.

# ROCKLIN CHAMBER OF COMMERCE

A blurred background of a bar with a wine glass in the foreground. The glass is partially filled with a dark liquid and has a logo on it. The bar counter is dark wood, and there are other glasses and a menu visible in the background. A teal banner with white text is overlaid on the image.

# ARPA PROGRAMS



# ARPA Spending Plan



# Restaurants

A man with a goatee, wearing a dark blue t-shirt with a circular logo that says "Campfire" and "Handcrafted in the U.S.A.", stands smiling in a shop. Behind him are shelves filled with various products, including jars, bags of goods, and containers. A black wire basket rack is also visible. The background is a well-lit, organized retail space.

*Support Local Businesses!*  
Shop and dine Rocklin today.

**Small Businesses and Hotels**

Rocklin Public Safety Foundation

**BUCKLE UP BABY**



**ROCKLIN  
PUBLIC  
SAFETY  
FOUNDATION**

SUPPORTING POLICE & FIRE



**Nonprofits**





# Career Technical Education





# Mental Health Aid





# ECONOMIC DEVELOPMENT STRATEGY

NO PARKING FIRE LANE

NO PARKING FIRE LANE



# Business Retention and Expansion



# SMA America Expands Headquarters

customer experience

# Growth Factory

A photograph of a Trader Joe's store exterior on a rainy day. The building has a light beige facade with dark brown trim. The "TRADER JOE'S" logo is prominently displayed in red, stylized letters. To the left, a tree with autumn-colored leaves stands near a building entrance with the number "5116". In the foreground, a wet parking lot reflects the sky and the store. A person in a grey hoodie and black leggings is walking on the sidewalk to the right, near a display of pumpkins and a large terracotta pot. The overall scene is overcast and damp.

**TRADER JOE'S**

**NEW BUSINESSES**



**Tractor Supply Co.**



# Bennett's Westside Kitchen



# Mindscape Fermentations

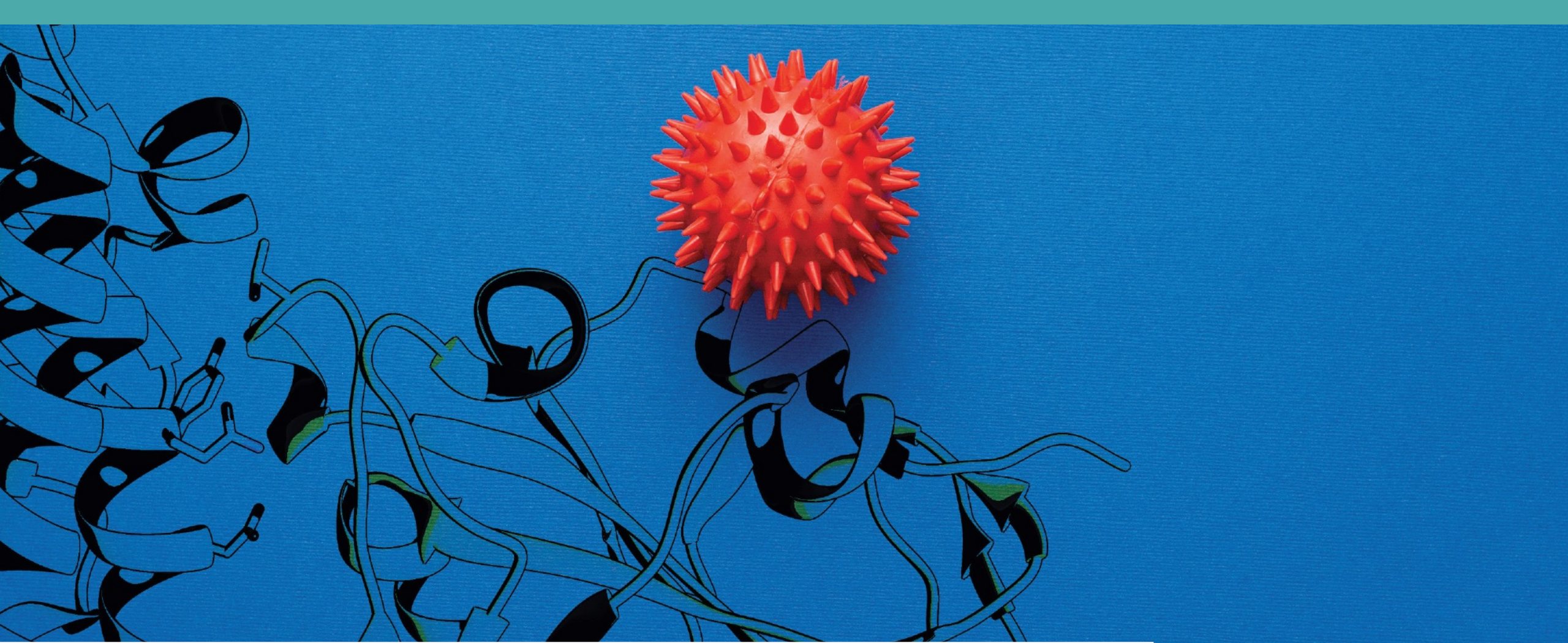




# Mario's Early Toast



**Lucid Motors**



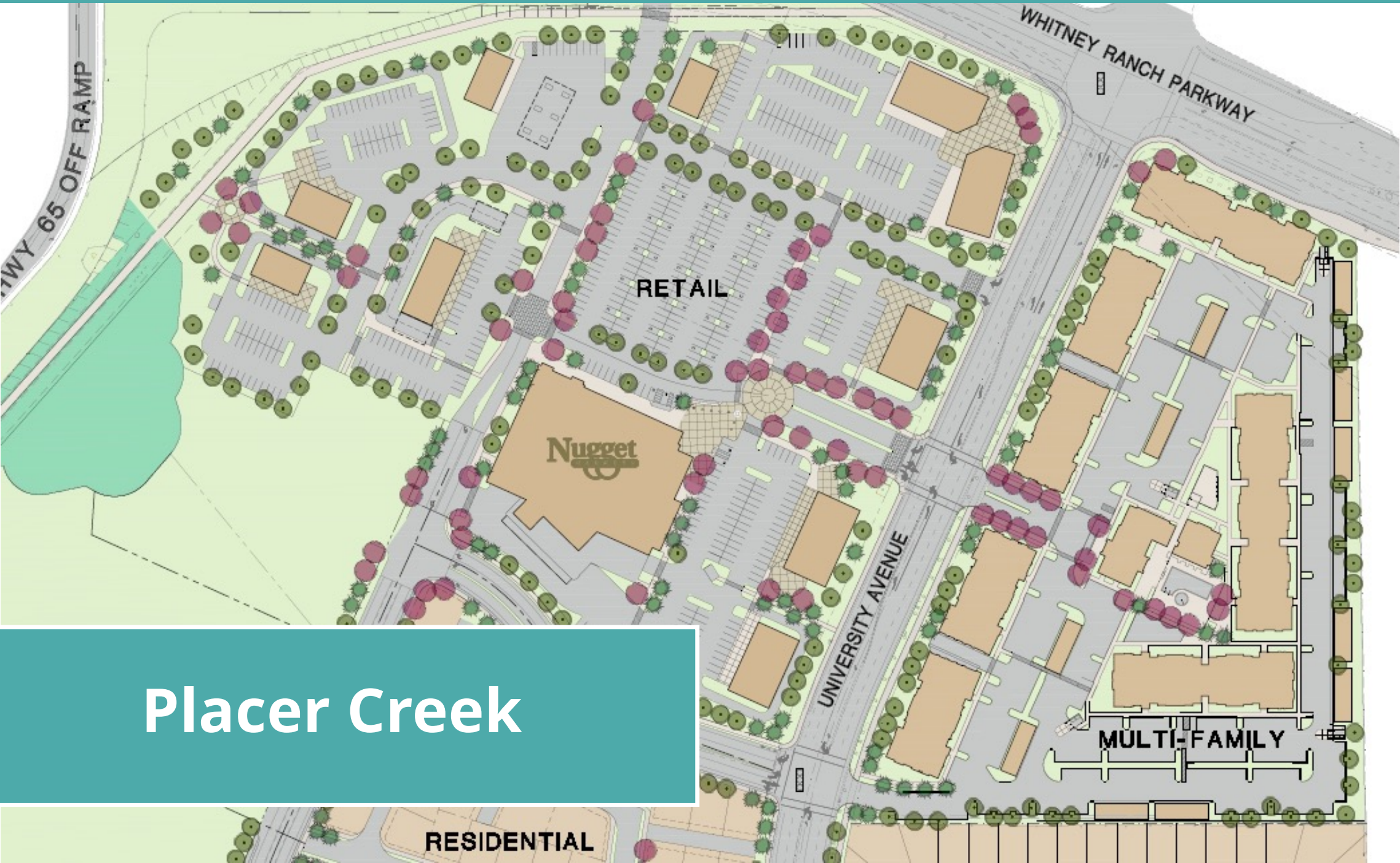
**CPC Scientific Chooses Rocklin**

# NEW DEVELOPMENTS





# Nugget Market



**Placer Creek**

RESIDENTIAL

RETAIL

MULTI-FAMILY

Nugget

UNIVERSITY AVENUE

WHITNEY RANCH PARKWAY

HWY 65 OFF RAMP



# Terracina

An architectural rendering of a modern, multi-story residential building at dusk. The building features a mix of light-colored siding and dark brickwork. It has multiple levels with balconies and large windows, many of which are illuminated from within, suggesting a warm interior. The sky is a deep blue with some light clouds. In the foreground, there is a paved walkway and a grassy area. Several people are depicted walking along the path, and a dog is being walked. The overall atmosphere is peaceful and inviting.

# College Park





# Rocklin Rd/I-80 Interchange



# Rocklin Rd./Pacific St. Roundabout



# SWRA Improvements



Whitney Ranch Pkwy

# Whitney Park Bike Pump Track

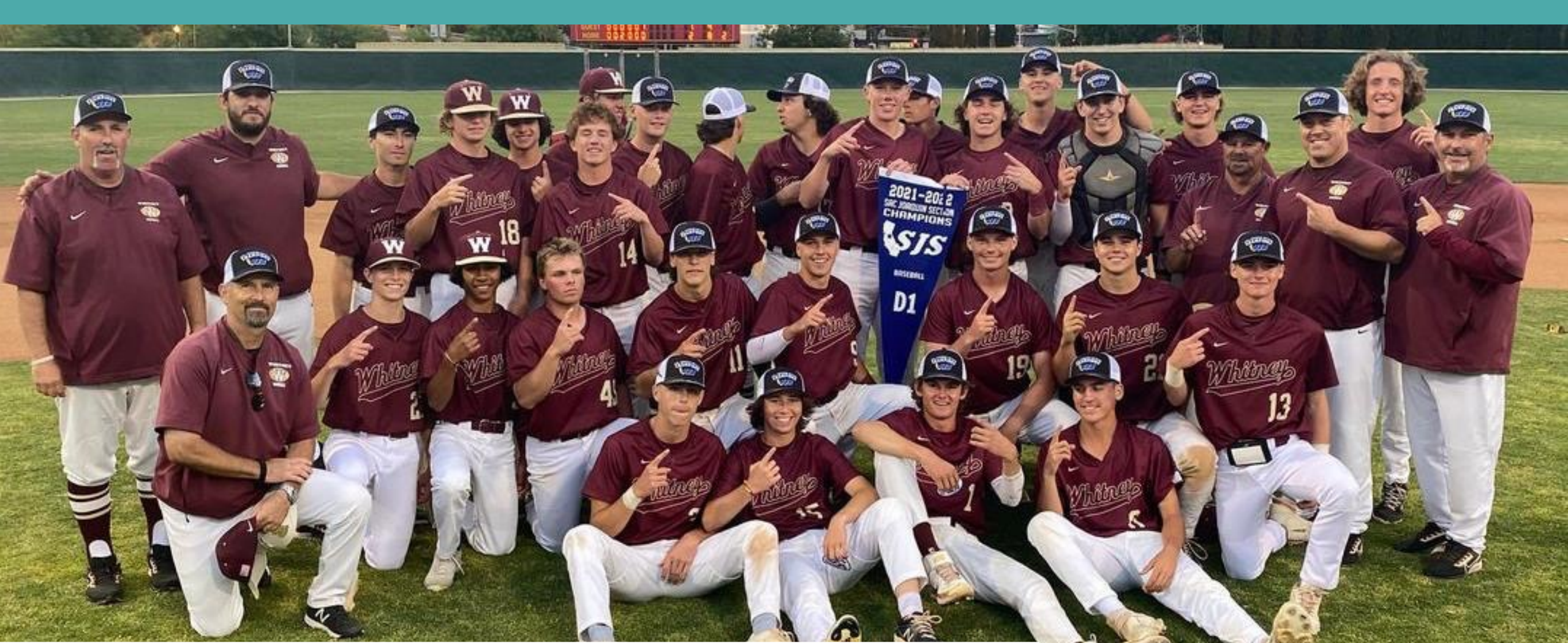
Whitney Ranch



# 2022 Concert Season



**WHAT MAKES  
ROCKLIN GREAT**



Local Sports Champions



# Quarry Park Adventures





**Real-Estate Hotspot**



Public Safety  
Volunteers



Rocklin Dog Park



Education



Placer County  
Martin Luther King Jr. March



Rocklin Historical Society



**Thank you!**





## VP, Business Ops David Godkin





**Police Chief  
Rustin Banks**



**Fire Chief  
Reggie Williams**



# Owner Mario Astorga

