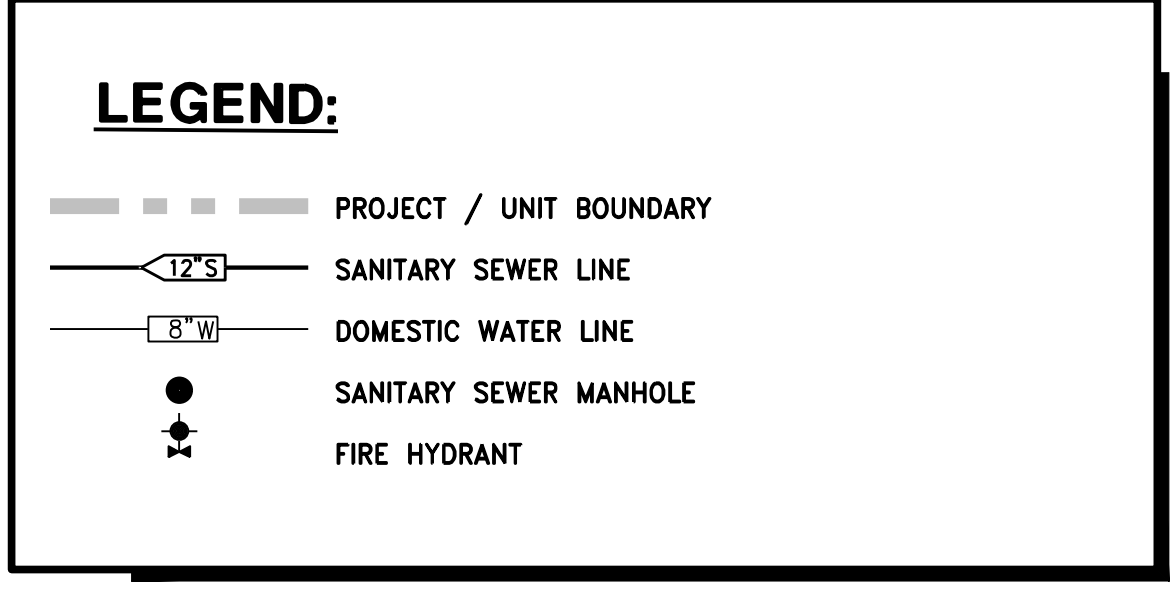
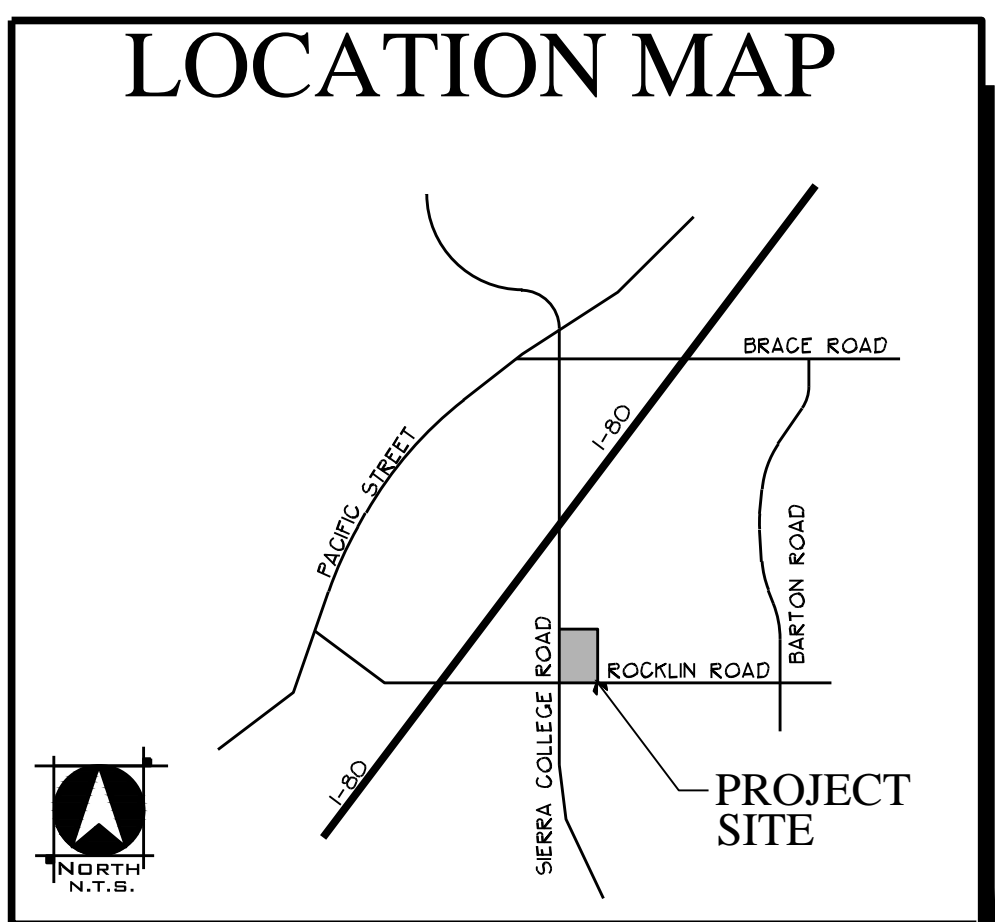
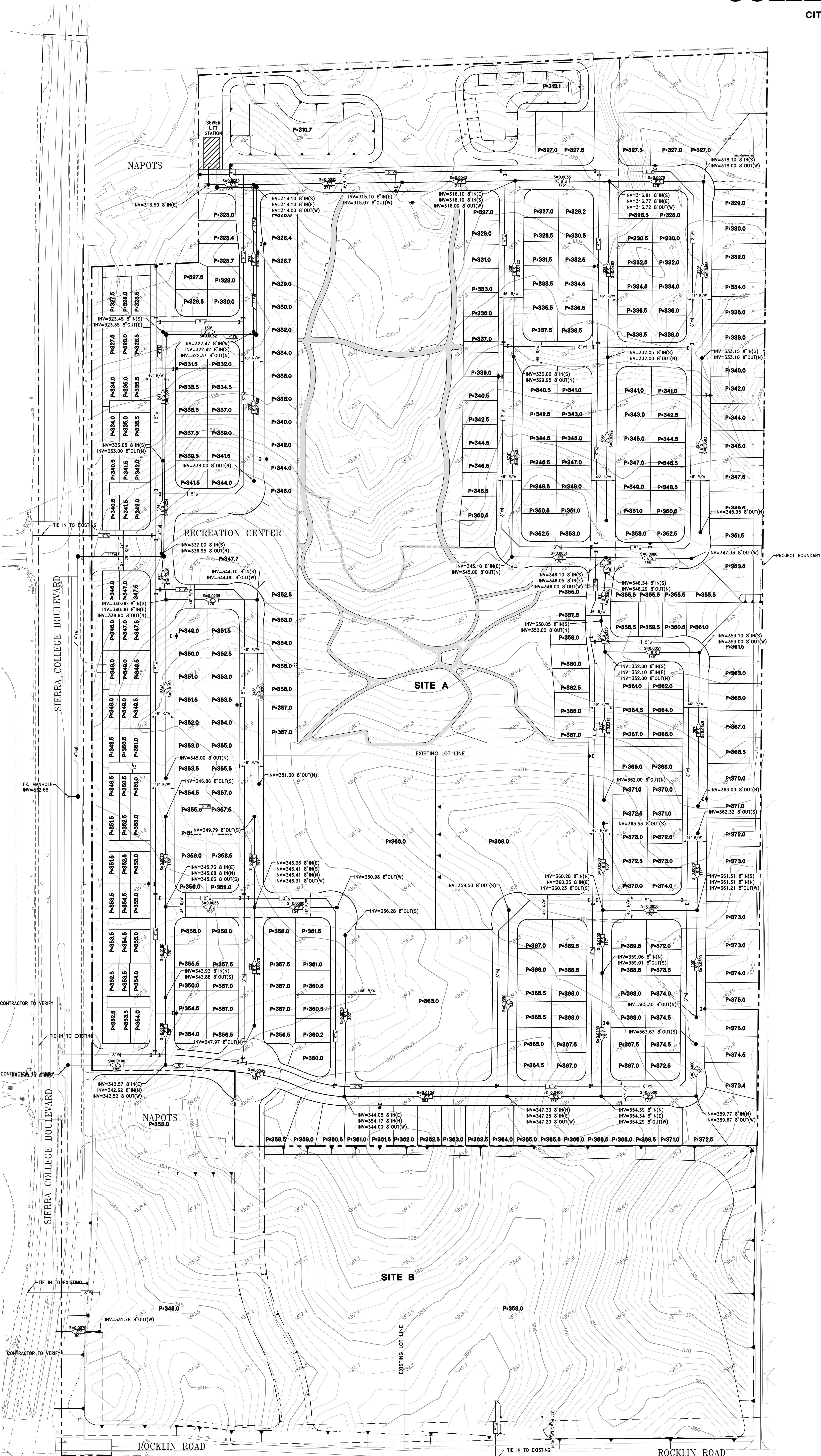


PRELIMINARY SEWER AND WATER STUDY
COLLEGE PARK - NORTH

CITY OF ROCKLIN CALIFORNIA

SHEET 7 OF 8
 NOVEMBER 5, 2020

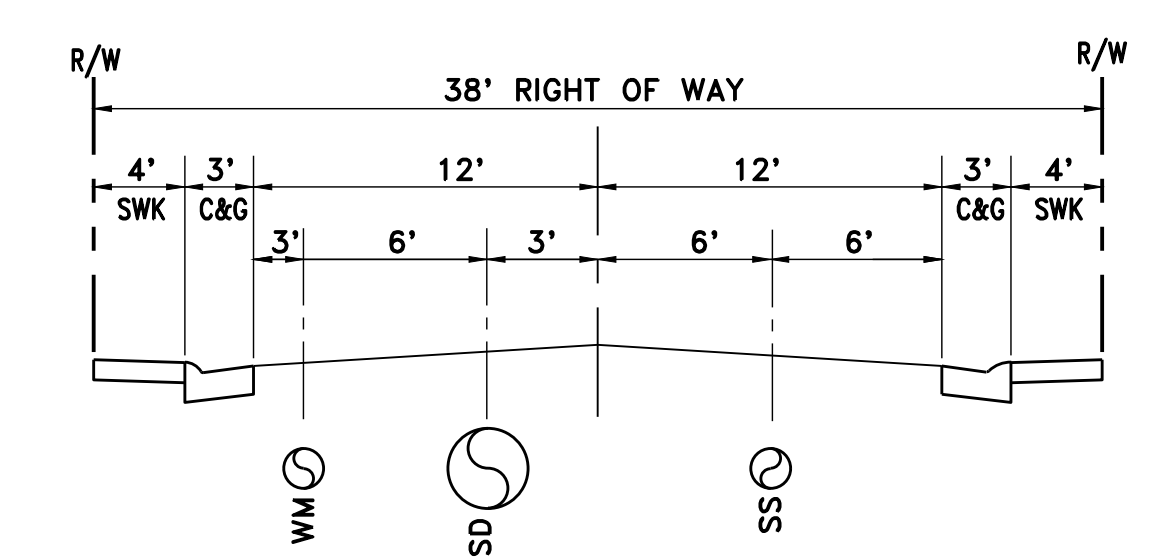


TOPOGRAPHY:

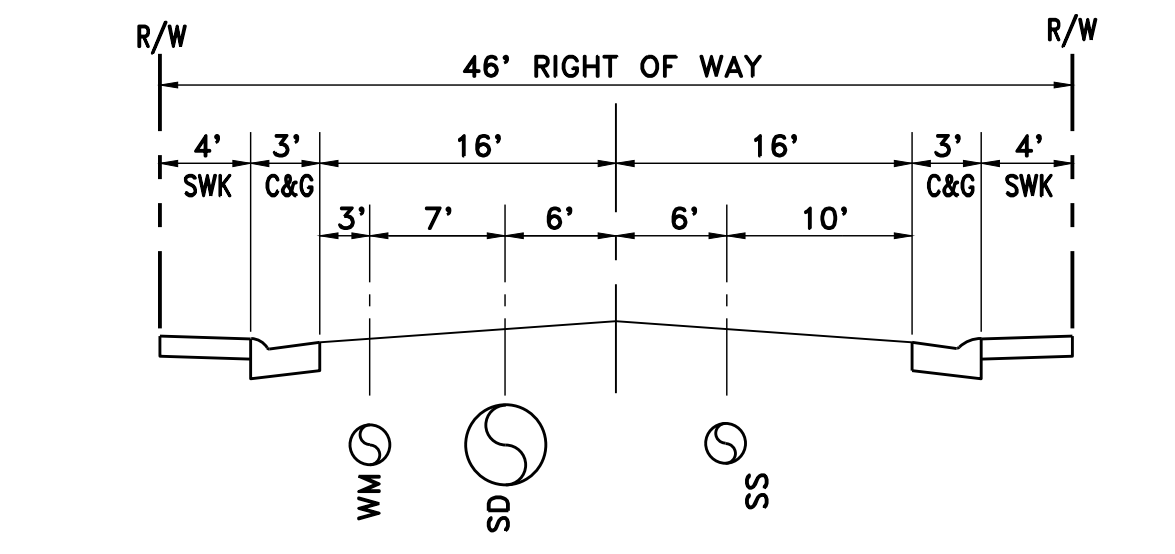
TOPOGRAPHICAL INFORMATION HAS BEEN PROVIDED BY OTHERS AND HAS NOT BEEN FIELD VERIFIED BY WOOD RODGERS, INC. ALL TOPOGRAPHICAL FEATURES AND ELEVATIONS ARE FOR INFORMATIONAL PLANNING PURPOSE ONLY.

SEWER DESIGN

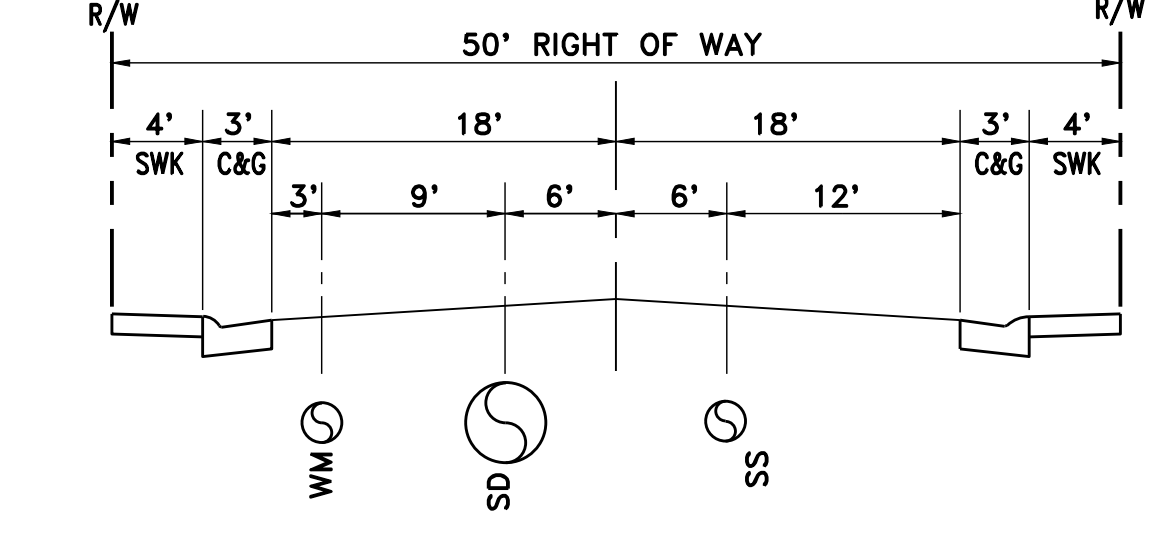
SEWER INVERTS AND SLOPES SHOWN ARE PRELIMINARY. FINAL INVERT ELEVATIONS AND SLOPES SHALL BE DETERMINED WITH FINAL DESIGN.



TYPICAL R/W & UTIL DIMENSIONS
 38' RIGHT OF WAY



TYPICAL R/W & UTIL DIMENSIONS
 46' RIGHT OF WAY



TYPICAL R/W & UTIL DIMENSIONS
 50' RIGHT OF WAY

